

PLUMBING LEGEND	
---	SOIL OR WASTE LINE
---	VENT LINE
---	COLD WATER LINE
---	HOT WATER LINE
---	HOT WATER RETURN LINE
---	GAS LINE
---	GREASE WASTE
---	NON-POTABLE COLD WATER LINE
---	GATE VALVE
---	OS&Y GATE VALVE
---	GAS COCK
---	BALL VALVE
---	UNION
---	PIPE TURNING UP
---	PIPE TURNING DOWN
---	P TRAP
---	RISER DIAGRAM NUMBER
---	WALL HYDRANT
---	SUPERVISED VALVE & FLOW SWITCH
---	EWC ELECTRIC WATER COOLER
---	INV INVERT
---	MH MANHOLE
---	NC NORMALLY CLOSED
---	HD HUB DRAIN
---	DD DUMPSTER DRAIN
---	FD FLOOR DRAIN
---	MFD MECHANICAL FLOOR DRAIN
---	SD SHOWER DRAIN
---	CWD CAN WASH DRAIN
---	LTD LAUNDRY TRENCH DRAIN
---	RD ROOF DRAIN
---	AD AREA DRAIN
---	FLOOR SINK
P-#	PLUMBING FIXTURE NUMBER
AFF	CONNECT TO EXISTING ABOVE FINISH FLOOR
BLW	BELOW
CO	CLEAN OUT
WS	WASTE STACK
SS	SOIL STACK
VS	VENT STACK
RL	RAIN LEADER
VSTR	VENT STACK THRU ROOF
CW	COLD WATER
HW	HOT WATER
HWR	HOT WATER RETURN
UR	URINAL
WC	WATER CLOSET
LAV	LAVATORY
NPCW	NON-POTABLE COLD WATER
NPHW	NON-POTABLE HOT WATER
RPZBF	REDUCED PRESSURE ZONE B.F. PREVENTER
EX., EXIST.	EXISTING
TP	TRAP PRIMER

### GENERAL NOTES

- LOCATIONS OF UTILITIES SHOWN ON PLANS ARE APPROXIMATE. VERIFY WITH LOCAL UTILITY PRIOR TO BIDDING.
- CONTRACTOR SHALL VERIFY LOCATION, SIZE AND ELEVATION OF ALL EXISTING PIPING PRIOR TO INSTALLING ANY NEW PIPE.
- ALL OUTSIDE CLEANOUTS SHALL BE BROUGHT TO GRADE AND EMBEDDED IN 18"X18"X8" THICK CONCRETE PAD. (J.R. SMITH 4258 OR EQUAL)
- WHEREVER DISSIMILAR METALS ARE CONNECTED ON WATER LINES, A DIELECTRIC UNION SHALL BE USED.
- ALL HORIZONTAL WATER, GAS, FIRE, AND VENT PIPING IS RUN ABOVE CEILING AS SHOWN UNLESS OTHERWISE NOTED.
- ALL HORIZONTAL SANITARY AND STORM PIPING IS RUN BELOW FLOOR AS SHOWN UNLESS OTHERWISE NOTED.
- ALL HORIZONTAL WATER PIPING ABOVE CEILING SHALL BE INSTALLED AS LOW AS POSSIBLE WITH BATT INSULATION INSTALLED OVER INSULATED PIPE.
- ALL WATER PIPING BELOW SLAB ON GRADE SHALL BE BENT UP AT ENDS SO THAT NO JOINTS OCCUR BELOW FLOOR.
- COORDINATE ALL PIPE ROUTING TO AVOID CONFLICTS WITH, STRUCTURAL, MECHANICAL, AND ELECTRICAL FEATURES OF BUILDING.
- ALL WALL HYDRANTS AND FREEZE PROOF BOX SHALL BE MOUNTED 24" ABOVE FINISH GRADE OR FINISH FLOOR UNLESS OTHERWISE NOTED.
- ALL WATER PIPING INSTALLED IN EXTERIOR WALLS SHALL BE LOCATED ON THE INTERIOR SIDE OF THE EXTERIOR WALL INSULATION.
- ALL RUNNING TRAP CLEANOUTS SHALL BE EXTENDED UP THRU FLOOR SLAB WITH C.O. COVER.
- ALL NON-POTABLE COLD WATER PIPING AND INSULATION SHALL BE PAINTED WITH TWO COATS OF BRIGHT YELLOW PAINT BY THIS SECTION.
- ALL WORK SHALL COMPLY WITH ALL APPLICABLE NFPA, STATE, COUNTY, AND LOCAL LAWS AND ORDINANCES.
- 18" HIGH AIR CHAMBERS SHALL BE PROVIDED ON HOT AND COLD WATER CONNECTION AT EACH FIXTURE OR EQUIPMENT.
- WHERE FIXTURES OR EQUIPMENT ARE NOTED 'TO BE REMOVED', CONTRACTOR SHALL REMOVE ALL PIPING AND CAP OR PLUG SAME. BELOW FLOOR, ABOVE CEILING OR IN PARTITIONS AS REQUIRED BY LOCAL CODES.
- WHERE FIXTURES OR EQUIPMENT ARE INDICATED TO BE REMOVED, REMOVE THE FIXTURE, ROUGHING AND ALL PIPING BACK TO MAINS AND CAP. REMOVE ALL ABANDONED PIPING FROM SITE.
- WHERE FIXTURES OR EQUIPMENT ARE INDICATED TO BE REMOVED, THE FIXTURE OR EQUIPMENT IS TO REMAIN THE PROPERTY OF THE OWNER AND THE CONTRACTOR SHALL DELIVER THE FIXTURES AND EQUIPMENT TO THE OWNERS STORAGE FACILITY AS DIRECTED BY THE OWNER. SHOULD THE OWNER DECIDE NOT TO RETAIN THE FIXTURES OR EQUIPMENT, THE FIXTURES AND EQUIPMENT BECOME THE PROPERTY OF THE CONTRACTOR AND SHALL BE REMOVED FROM THE SITE.
- WHERE FIXTURES ARE TO BE REMOVED AND REPLACED WITH NEW, REPLACE PIPING BACK TO STOPS. RE-USE ROUGH-IN PIPING AND RECONNECT COMPLETE.

### PLUMBING FIXTURE CONNECTION SCHEDULE

MARK	FIXTURE	WASTE	CW	HW	REMARKS
P-1	WATER CLOSET	4"	1"	---	FLOOR MOUNT: KOHLER K-4350, SLOAN OPTIMA 111 ES-S FLUSH VALVE COMPLETE WITH "YJ" PIPE SUPPORT AND CHURCH 295 NSSC WHITE OPEN FRONT SEAT. MODIFY EXISTING ROUGH IN CONNECT COMPLETE.
P-2	WATER CLOSET (ADA)	4"	1"	---	FLOOR MOUNT (ADA): KOHLER K-4302, 16-1/2" FLOOR TO RIM, TO MEET A.D.A., SLOAN OPTIMA 111 ES-S FLUSH VALVE COMPLETE WITH "YJ" PIPE SUPPORT AND CHURCH 295 NSSC WHITE OPEN FRONT SEAT. MUST MEET A.D.A. MODIFY EXISTING ROUGH IN CONNECT COMPLETE.
P-3	WATER CLOSET	4"	1"	---	FLOOR MOUNT: KOHLER K-4350, SLOAN OPTIMA 111 ES-S FLUSH VALVE COMPLETE WITH "YJ" PIPE SUPPORT AND CHURCH 295 NSSC WHITE OPEN FRONT SEAT.
P-4	WATER CLOSET (ADA)	4"	1"	---	FLOOR MOUNT (ADA): KOHLER K-4302, 16-1/2" FLOOR TO RIM, TO MEET A.D.A., SLOAN OPTIMA 111 ES-S FLUSH VALVE COMPLETE WITH "YJ" PIPE SUPPORT AND CHURCH 295 NSSC WHITE OPEN FRONT SEAT. MUST MEET A.D.A.
P-5	LAVATORY (ADA)	1 1/4"	1/2"	1/2"	COUNTER MOUNTED, KOHLER K-2196-4, MCGUIRE 165 SUPPLIES WITH STOPS, 8872 P-TRAP, 155A STRAINER AND TAILPIECE, SLOAN SF-2300 FAUCET. PROVIDE TRAP WRAP AND SYMMONS 5-210-CK MIXING VALVE. MODIFY EXISTING ROUGH IN CONNECT COMPLETE.
P-6	WATER COOLER	1 1/4"	1/2"	---	ELKAY EZSTL8C, STEEL BI-LEVEL, MCGUIRE 165 SUPPLY WITH STOPS AND 8872 P-TRAP.
P-7	URINAL	2"	3/4"	---	KOHLER K-5016-ET COMPLETE WITH SLOAN OPTIMA 186-0.5 ES-S FLUSH VALVE WITH "YJ" SUPPORT. MODIFY EXISTING ROUGH IN CONNECT COMPLETE.
P-8	URINAL (ADA)	2"	3/4"	---	KOHLER K-5016-ET COMPLETE WITH SLOAN OPTIMA 186-0.5 ES-S FLUSH VALVE WITH "YJ" SUPPORT. SET LIP AT 17" AT FINISHED FLOOR. EXISTING ROUGH IN CONNECT COMPLETE.
P-9	SINK	1 1/2"	1/2"	1/2"	ELKAY CHS1716C, LK-8 STRAINER, LK940N04L2H FAUCET WITH GOOSE NECK SPOUT & AE13A AERATOR, LK500 P-TRAP W/CLEANOUT & ZURN Z8808-XL-LR-PC WHEEL HANDLE STOPS & SUPPLIES.
P-10	SHAMPOO BOWL	1 1/2"	1/2"	1/2"	BELVEDERE MODEL #3800 COMPLETE WITH FAUCET, EBC LA10 STOPS WITH SUPPLIES AND J.R. SMITH #8750 OR #8760 HAIR INTERCEPTOR.
P-11	CAN WASH	4"	1/2"	1/2"	J.R. SMITH #5560 WITH VACUUM BREAKER AND ALL BRONZE BOX.
P-12	3 COMPARTMENT SINK	4" FS	1/2"	1/2"	ADVANCE TABCO #9-23-60-18R 3 COMPARTMENT SINK WITH (2) LK945AT08L2T FAUCETS, K-40 LEVER DRAIN, ZURN Z8808-XL-LR-PC STOPS & SUPPLIES, EXTEND WASTE TO FLOOR SINK.
P-13	HAND SINK	1 1/2"	1/2"	1/2"	WALL HUNG - KOHLER K-2030 (20" X 18") COMPLETE, CHICAGO FAUCET #EQ-C11A-51ABBN SENSOR FAUCET, K-7715 OUTLET WITH TAILPIECE, J.R. SMITH #700-M31 FIXTURE SUPPORT, EBC #LA10 STOPS WITH SUPPLIES AND EBC #TA125 P-TRAP. INSULATE P-TRAP, STOPS AND SUPPLIES WITH EBC IK INSULATOR KIT AND INSTALL WITH RIM AT 31" ABOVE FINISH FLOOR.
P-14	LAVATORY (WALL HUNG ADA)	1 1/4"	1/2"	1/2"	KOHLER K-2005, MCGUIRE 165 SUPPLIES WITH STOPS, 8872 P-TRAP, 155A STRAINER AND TAILPIECE, SLOAN SF-2300 FAUCET. PROVIDE TRAP WRAP, SYMMONS 5-210-CK MIXING VALVE, J.R. SMITH #700 CARRIER AND SET W/ RIM 34" AFF
P-15	SINK, COUNTER MTD.	1 1/2"	1/2"	1/2"	ELKAYLRAD191955, MCGUIRE 165 SUPPLIES WITH STOPS, 8872 P-TRAP, 155A STRAINER AND TAILPIECE, CHICAGO SENSOR FAUCET #EQ-CAA1-51ABBN. PROVIDE TRAP WRAP, SYMMONS 5-210-CK MIXING VALVE, J.R. SMITH #700 CARRIER AND SET W/ RIM 34" AFF
TD-1	TRENCH DRAIN SYSTEM	4"	---	---	ACO DRAIN KS200 COMPLETE WITH GRATINGS SECURED WITH "QUICKLOK" LOCKING AS MANUFACTURED BY ACO POLYMER PRODUCTS, INC. OR APPROVED EQUAL. GRATES TO BE TYPE 647Q STAINLESS LONGITUDINAL QUICKLOK GRATE. INSTALLED PER MANUFACTURER'S INSTALLATION INSTRUCTIONS AND RECOMMENDATIONS. FIELD COORDINATE WITH MANUFACTURER REQUIRED NUMBER OF GRATINGS AND TRENCH CHANNELS FOR EACH APPLICATION ON PROJECT.
FD	FLOOR DRAIN	3"	---	---	J R SMITH, #2010 WITH 6" ROUND NICKEL BRONZE REINFORCED GRATE.
FS	FLOOR SINK	3"	---	---	J E SMITH, #3400, 12" DIAMETER, 8" DEEP PORCELAIN ENAMELED CAST IRON INTERIOR, WITH TOP GRATE, WITH PORCELAIN ENAMELED DOME BOTTOM STRAINER.

### FOOD SERVICE SCHEDULE

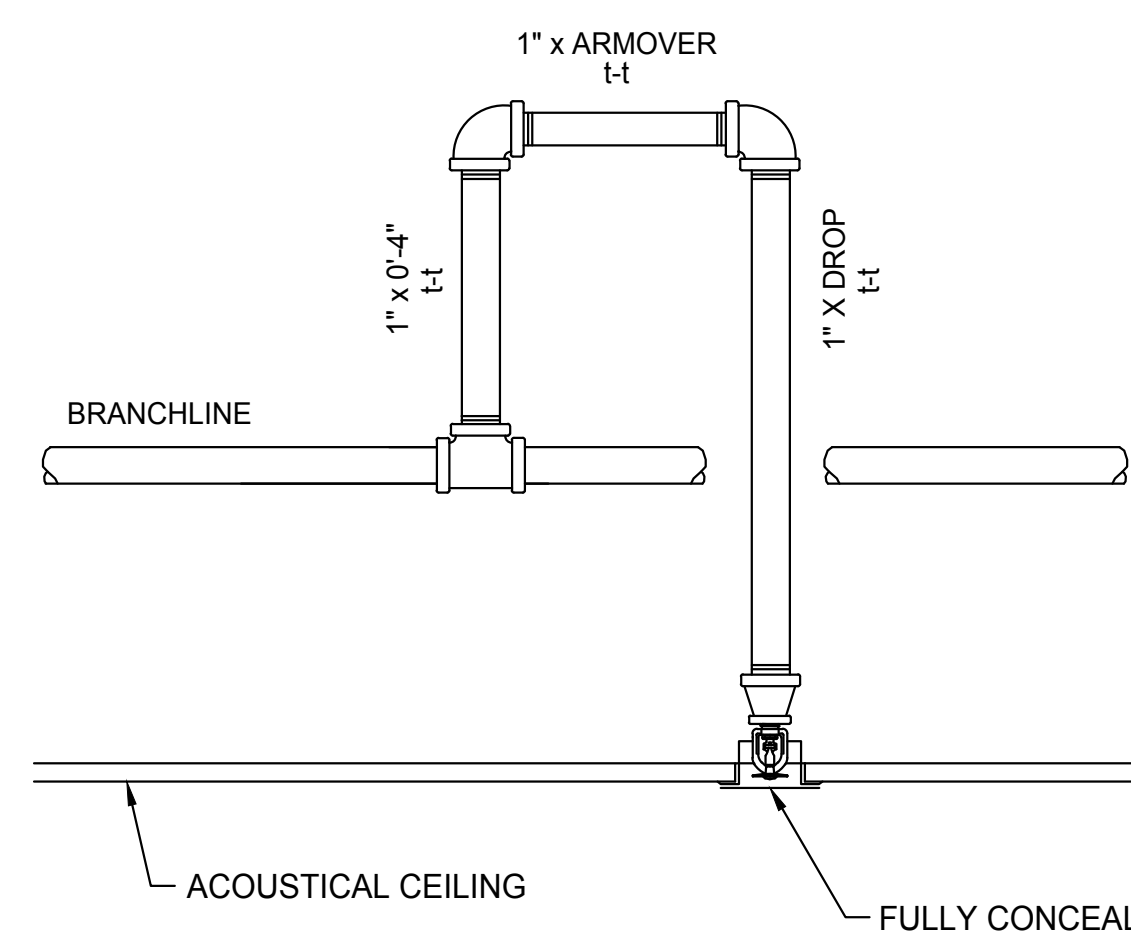
CHARLEY'S		CW	HW	FW	WASTE	GAS	REMARKS
(K1)	GAS FRYER	---	---	---	---	1/2" (110 CFH)	ROUGH AND CONNECT COMPLETE
(K1-)	GAS GRIDDLE	---	---	---	---	1/2" (120 CFH)	ROUGH AND CONNECT COMPLETE

### POPEYE'S

MARK	FIXTURE	CW	HW	FW	WASTE	GAS	REMARKS
(A10.U)	FRY BATTERY	---	---	---	---	1" (375 CFH)	ROUGH AND CONNECT COMPLETE
(A37.L)	SINK, 1 COMPARTMENT	1/2"	1/2"	---	2"	---	ROUGH AND CONNECT COMPLETE
(A46)	PORTABLE BREADER/BLENDER/SIFTER	---	---	---	1/2"	---	ROUGH AND CONNECT COMPLETE; EXTEND INDIRECT WASTE TO FLOOR SINK
(A47.4)	ICE BATTER/SIFTER TABLE	---	---	---	1/2"	---	ROUGH AND CONNECT COMPLETE; EXTEND INDIRECT WASTE TO FLOOR SINK
(D30)	PACKING STATION W/ DIPPER WELL	1/2"	---	---	2"	---	ROUGH AND CONNECT COMPLETE; EXTEND INDIRECT WASTE TO FLOOR SINK
(D40)	3 COMPARTMENT SINK	1/2"	1/2"	---	2"	---	ROUGH AND CONNECT COMPLETE; EXTEND INDIRECT WASTE TO FLOOR SINK
(D70)	DISPENSER-HOT WATER	1/4"	---	---	---	---	ROUGH AND CONNECT COMPLETE
(D81)	CHUBB WARMER	1/2"	---	---	1 1/2"	---	ROUGH AND CONNECT COMPLETE; EXTEND INDIRECT WASTE TO FLOOR SINK
(E30.84)	CHICKEN VAT IN COOLER	---	---	---	2"	---	ROUGH AND CONNECT COMPLETE; EXTEND WASTE THRU COOLER WALL TO HUB DRAIN
(H12.2P)	PRODUCTION COUNTER	1/2"	---	---	2"	---	ROUGH AND CONNECT COMPLETE; EXTEND INDIRECT WASTE TO FLOOR SINK
(K10)	ICEMAKER	---	---	3/8"	3/4"	---	ROUGH AND CONNECT COMPLETE; PROVIDE SYMMONS #5-110-CK TMV AND SET TO 120"
(K15)	ICE BIN	---	---	---	3/4"	---	ROUGH AND CONNECT COMPLETE; PROVIDE SYMMONS #5-110-CK TMV AND SET TO 120"
(N10)	HAND SINK W/HANDS FREE FAUCET	1/2"	1/2"	---	1 1/2"	---	ROUGH AND CONNECT COMPLETE; PROVIDE SYMMONS #5-110-CK TMV AND SET TO 120"

### SUBWAY

MARK	FIXTURE	CW	HW	FW	WASTE	GAS	REMARKS
(S27)	BREAD OVEN	1/4"	---	---	---	---	ROUGH AND CONNECT COMPLETE
(S31)	BACK COUNTER WITH HAND SINK	1/2"	1/2"	---	1 1/2"	---	ROUGH AND CONNECT COMPLETE; PROVIDE SYMMONS #5-110-CK TMV & SET TO 120"
(S36)	3 COMPARTMENT SINK	1/2"	1/2"	---	1 1/2"	---	ROUGH AND CONNECT COMPLETE; EXTEND INDIRECT WASTE TO FLOOR SINK
(S41)	VEGETABLE SINK	1/2"	1/2"	---	1 1/2"	---	ROUGH AND CONNECT COMPLETE; EXTEND INDIRECT WASTE TO FLOOR SINK
(S44B)	DISHWASHER	---	3/4"	---	1"	---	ROUGH AND CONNECT COMPLETE; EXTEND INDIRECT WASTE TO FLOOR SINK



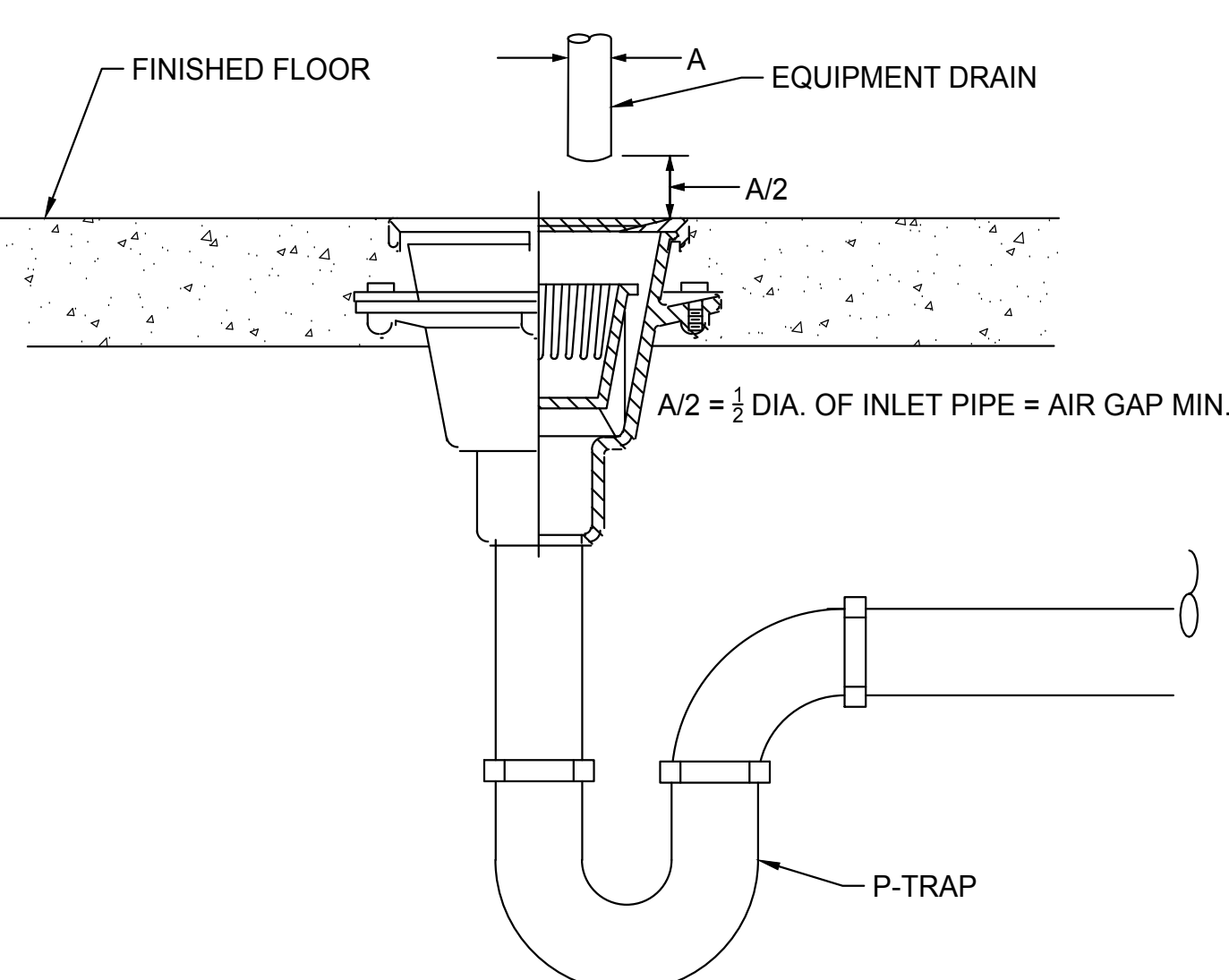
NOTE: PENDENT HEADS TO BE SPACED IN THE CENTER OF CEILING TILE WHERE LAY-IN CEILING OCCURS.

### DROP PENDANT DETAIL

NO SCALE

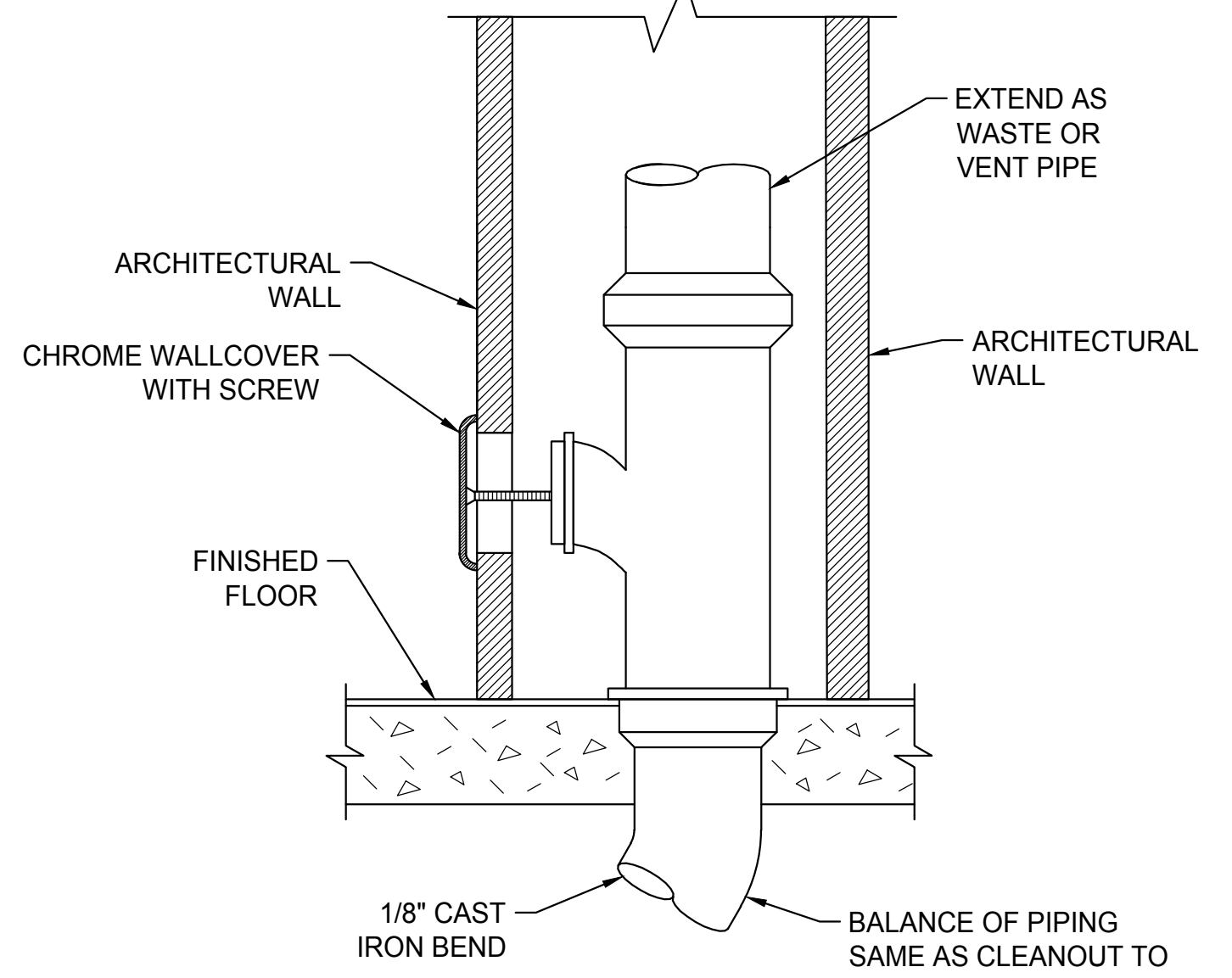
### SPRINKLER NOTES

- THE FIRE PROTECTION CONTRACTOR SHALL PROVIDE MODIFICATIONS AND ADDITIONS TO THE EXISTING SPRINKLER SYSTEM TO ENSURE NFPA 13 COVERAGE FOR AREAS OF RENOVATION AS SHOWN ON THE ARCHITECTURAL PLANS.
- DESIGN OF ALL MODIFICATIONS AND ADDITIONS TO THE EXISTING SPRINKLER SYSTEM SHALL BE DELEGATED TO THE FIRE PROTECTION CONTRACTOR. THE FIRE PROTECTION CONTRACTOR SHALL PROVIDE SHOP DRAWINGS AND CALCULATIONS FOR ALL DESIGN MODIFICATIONS REQUIRED IN THE WORK AREA. SHOP DRAWINGS AND CALCULATIONS SHALL BE PREPARED, SEALED AND SIGNED BY A LICENSED FIRE PROTECTION ENGINEER.
- SHOP DRAWINGS SHALL INCLUDE A REFLECTED CEILING PLAN INDICATING SPRINKLER HEADS, LIGHTS AND HVAC CEILING DEVICES.
- ADJUST EXISTING SPRINKLER HEAD LOCATIONS AND PIPING AS APPROPRIATE.
- PROVIDE NEW SPRINKLER HEADS AND PIPING AS NEEDED.
- SEE ARCHITECTURAL PLANS FOR THE EXACT ROOM AND CEILING LAYOUT, LIMITS OF CONSTRUCTION AND BUILDING CLASSIFICATIONS.
- NEW SPRINKLER HEADS SHALL BE QUICK RESPONSE AND SHALL MATCH EXISTING TYPE.
- ALL PIPING 2" AND SMALLER SHALL BE SCHEDULE 40 STEEL WITH THREADED JOINTS AND CAST IRON OR MALLEABLE IRON FITTINGS. PROVIDE HANGERS PER NFPA 13 SPACING.
- PIPING LARGER THAN 2" MAY BE SCHEDULE 10 PIPE WITH ROLL GROOVED JOINTS. HANGER SPACING TO BE PER NFPA 13 REQUIREMENTS.
- PROVIDE A PIPING PLAN SHOWING COORDINATION OF SPRINKLER PIPING WITH ALL ITEMS ABOVE CEILING.



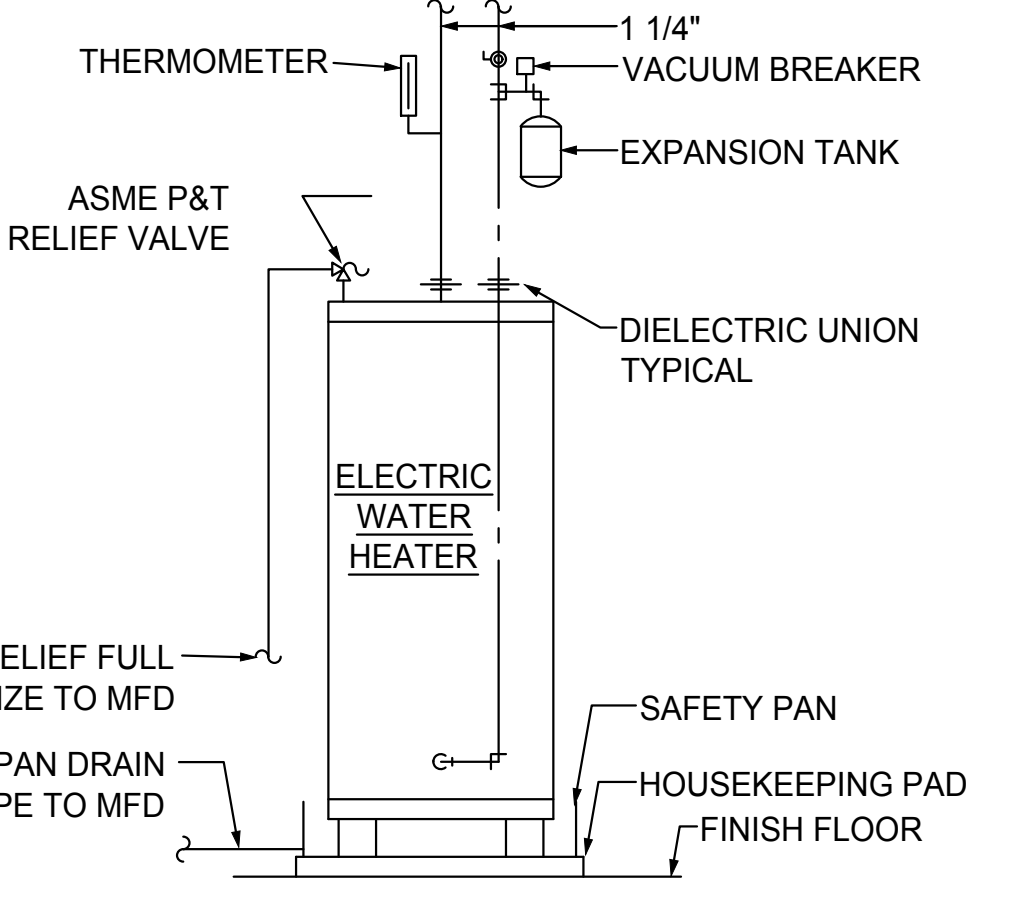
### DETAIL OF PIPING AT FLOOR SINK

NO SCALE



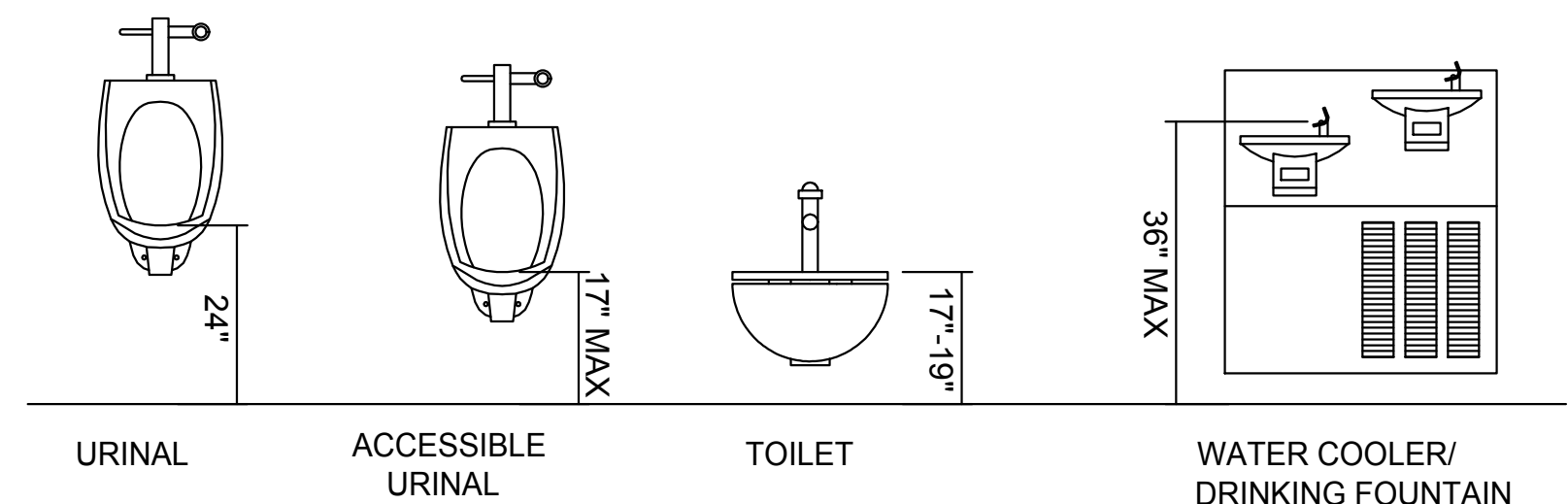
### WALL CLEANOUT DETAIL

NO SCALE



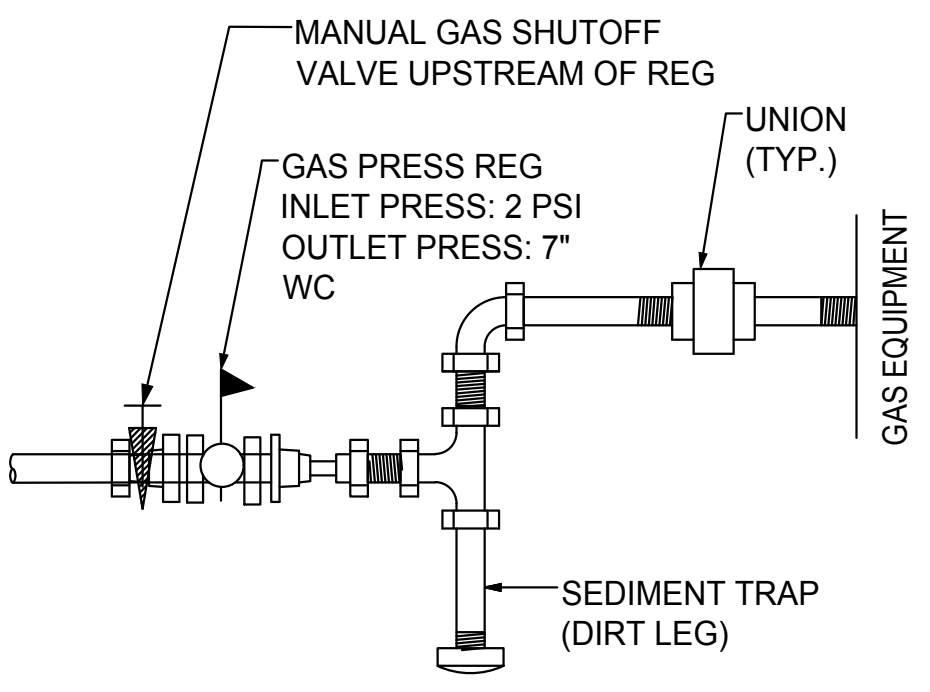
### DETAIL OF PIPING AT ELECTRIC WATER HEATER

NO SCALE



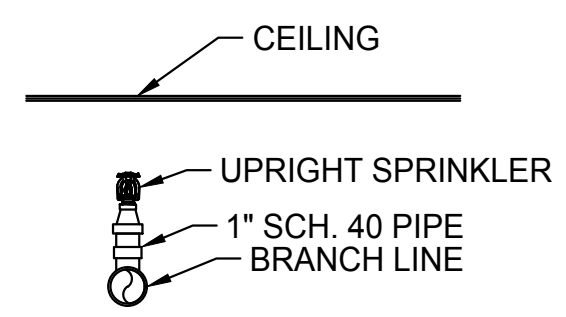
### PLUMBING ADA FIXTURE MOUNTING HEIGHTS FOR ALL NEW AND REPLACEMENT FIXTURES

NO SCALE



### GAS CONNECTION

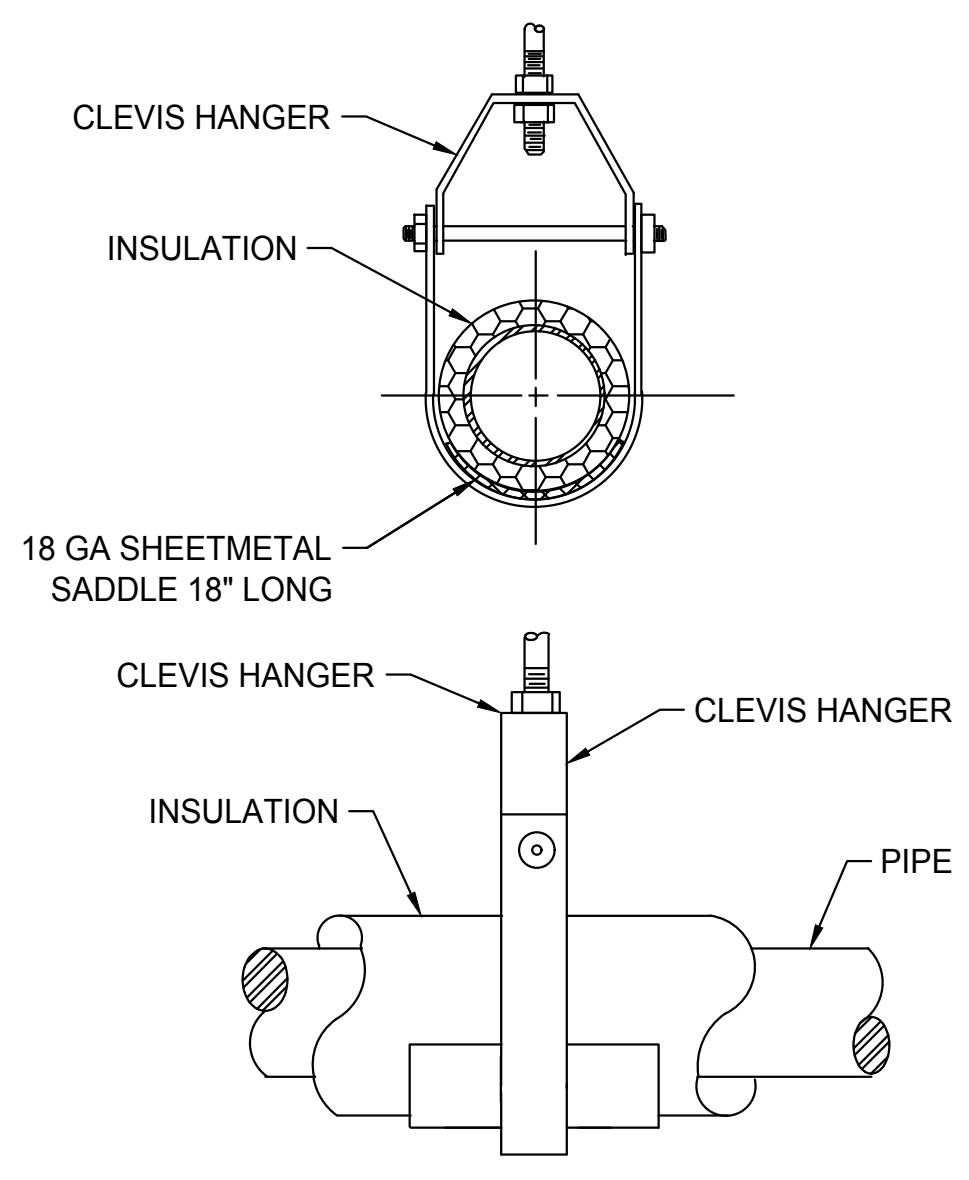
NO SCALE



RETURN BEND ASSEMBLY W/ UPRIGHT FOR CONCEALED SPACE PROTECTION

### SPRIG DETAIL

NO SCALE



### SUSPENDED PIPE SUPPORT

NO SCALE

**BBC&S**  
 ENGINEERING CONSULTANTS, INC.  
 HVAC & PLUMBING FIRE PROTECTION  
 200 HUNTERSVILLE BUSINESS PARK  
 SUITE 235  
 BIRMINGHAM, AL 35242  
 Phone: 205-999-9779  
 www.bbcands.com

## EXCHANGE

MPFS (RE-C) P.O. BOX 660320 DALLAS, TX 75266-0320

KEY PLAN:

DATE	REVISION NO. & DESCRIPTION	BY
5-2-17	1 ADDED FS AND FD SPEC.	LJB
8-26-17	2 REVISED SPRINKLER NOTES	LJB

PWBA ARCHITECTS INC.  
 MONTGOMERY, ALABAMA  
 PWBA PROJECT NO. 140704

DESIGN BY:  
**MDG**  
 CHECKED BY:  
**LJB**  
 RECOMMENDED: DATE  
 APPROVED: DATE

**RE-C**  
 REAL ESTATE DIRECTORATE

PROJECT: EXCHANGE IMAGE UPGRADE

HURLBURT FIELD, FLORIDA

DRAWING TITLE: PLUMBING SCHEDULES LEGENDS AND NOTES

DATE: 24 MARCH 2017 SCALE: NONE SHEET: P001  
 DRAWING PROJECT NO. 0944-14-000004