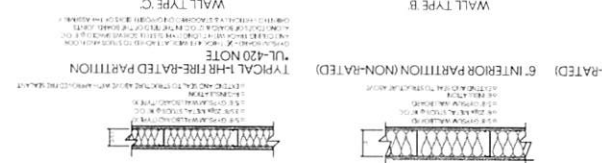
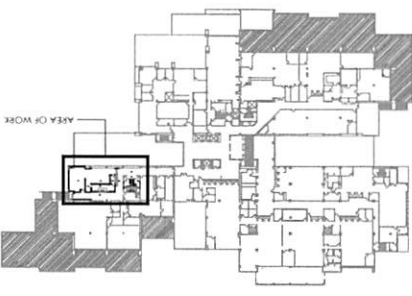


1 NEW WORK FLOOR PLAN
SCALE 1/8" = 1'-0"

2 WALL TYPES
SCALE 1/4" = 1'-0"

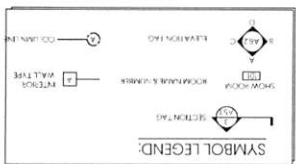


A BUILDING KEY PLAN - SECOND FLOOR
SCALE 1/8" = 1'-0"



NEW WORK NOTES:

1. ALL DIMENSIONS TO FACE UNLESS NOTED.
2. CLEAN PARTIAL LEVEL, SMOOTH AND REPAIR FLOOR SLABS FORMER FOR SMOOTH FINISHES.
3. SET TO MATCH ALL PARTITION AND JOCK LOCATIONS ON FLOOR FINISHES TO MATCH EXISTING PARTITION AND JOCK LOCATIONS.
4. ALL WOOD FLOORING TO MATCH EXISTING FINISHES.
5. SET TO MATCH ALL PARTITION AND JOCK LOCATIONS ON FLOOR FINISHES TO MATCH EXISTING PARTITION AND JOCK LOCATIONS.
6. REPAIR AND REFINISH ALL CONCRETE SLABS AND PREPARE FOR FRESH NEW WALL FINISHES.
7. PATCH AND REPAIR ALL CONCRETE SLABS AND PREPARE FOR FRESH NEW WALL FINISHES.
8. SLOPE ALL NEW FLOORING TO EXISTING FLOOR DRAINAGE.
9. COORDINATE WITH WORK WITH ALL MECHANICAL, PLUMBING, AND ELECTRICAL DRAWINGS.
10. REPAIR AND REFINISH ALL CONCRETE SLABS AND PREPARE FOR FRESH NEW WALL FINISHES.
11. REPAIR AND REFINISH ALL CONCRETE SLABS AND PREPARE FOR FRESH NEW WALL FINISHES.



New Work Floor Plan
A101



MC Blanchard Building
Food Service and
Restroom Renovation
190 West Government St.,
Pensacola, FL 32502
GMC Project #: APN190093

ISSUE	DATE
REVISION 1	02-25-2021
REVISION 2	03-25-2021
REVISION 3	03-25-2021

728 Bayfront Parkway, Suite 400
Pensacola, FL 32502
781.434.0298
gmc@twork.com
Gerald Steven Jennings -
Qualifying Agent
FL Architect #AIC009953





720 Brynarth Parkway, Suite 200
 Pensacola, FL 32502
 Phone: 904.432.0706
 FLS Architect AR 0009853

ISSUE	DATE
PERMIT SET	02-25-2020
REVISION 1	08-17-2021
DRAWN BY	
CHECKED BY	

MC Blanchard Building
 Food Service and
 Restroom Renovation
 190 West Government St.
 Pensacola, FL 32502
 GMC Project #: APN190093



New Work Flooring Plan

A104

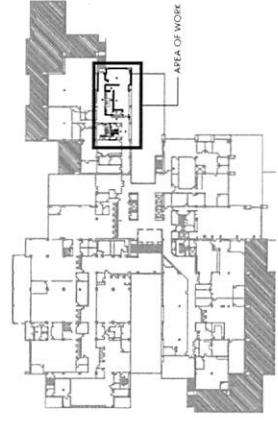
FLOORING LEGEND:

	NEW 12x18 GLAZED PORCELAIN FLOOR TILE IN A Herringbone Pattern (EXISTING PORCELAIN TILE IN STAIRS) (CONCRETE CHIC) (AMERICAN OLEAN, CONCRETE CHIC) (ELEGANT GRAY CG27)
	NEW EPOXY FLOORING, DURABLE/HEALTHY SYSTEM (GRAMPHON/NOVA)
	NEW LVT FLOORING
	NEW CONCRETE LIGHT BROOM FINISH

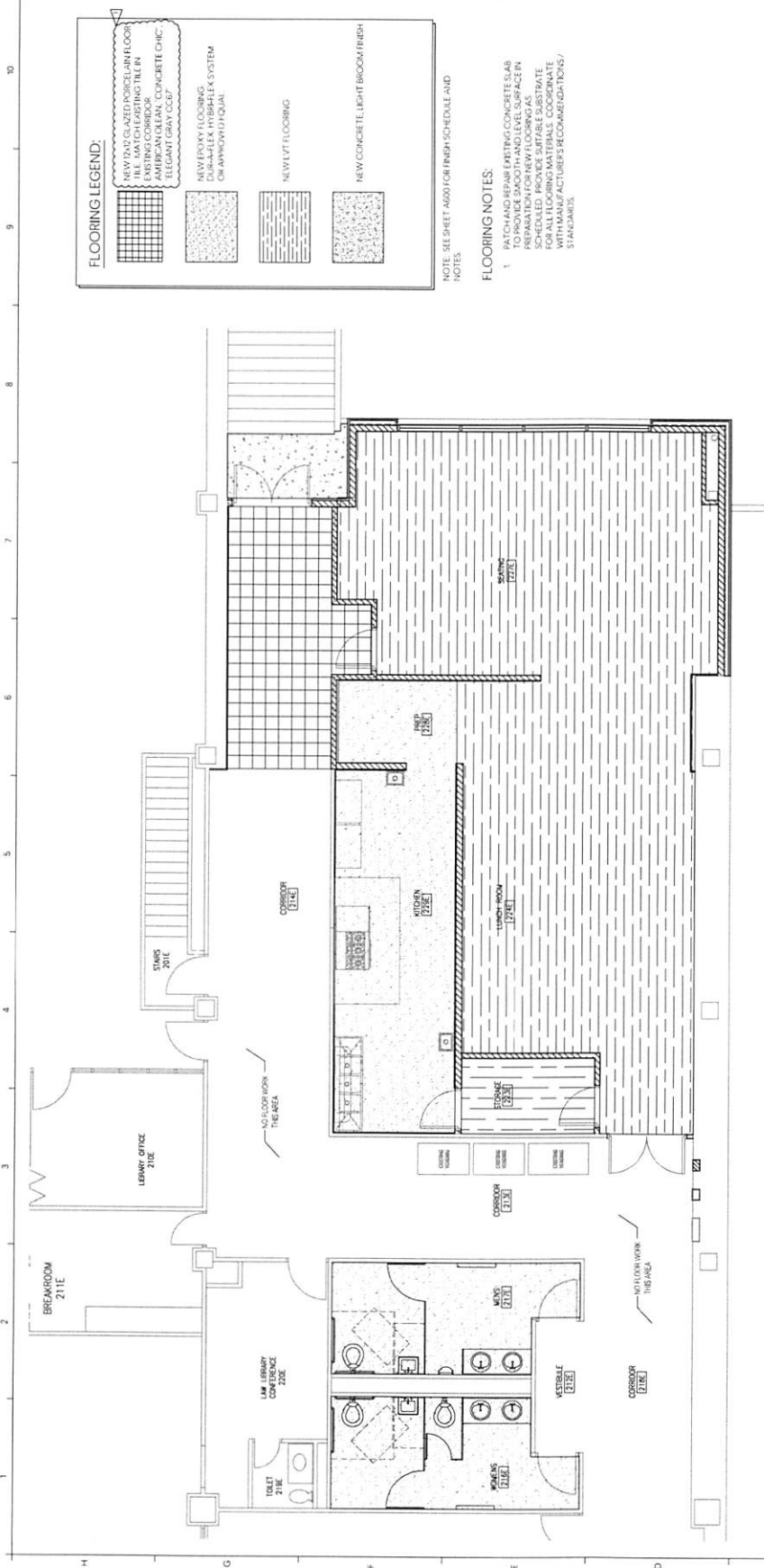
NOTE: SEE SHEET A500 FOR FINISH SCHEDULE AND NOTES.

FLOORING NOTES:

1. PATCH AND REPAIR EXISTING CONCRETE SLAB TO PROVIDE SMOOTH AND LEVEL SURFACE IN PREPARATION FOR NEW FLOORING AS NOTED. PROVIDE ALL PATCHES AND REPAIRS FOR ALL FLOORING MATERIALS COORDINATE WITH MANUFACTURER'S RECOMMENDATIONS / STANDARDS.



A BUILDING KEY PLAN - SECOND FLOOR



1. NEW WORK FLOORING PLAN

1 2 3 4 5 6 7 8 9 10

A B C D E F G H I J

A410

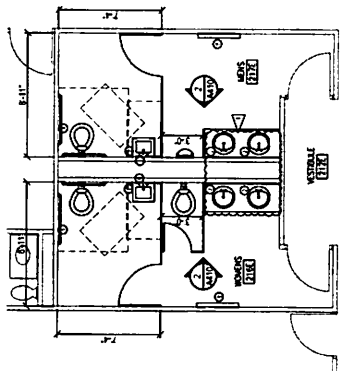
Interior Elevations
and Details



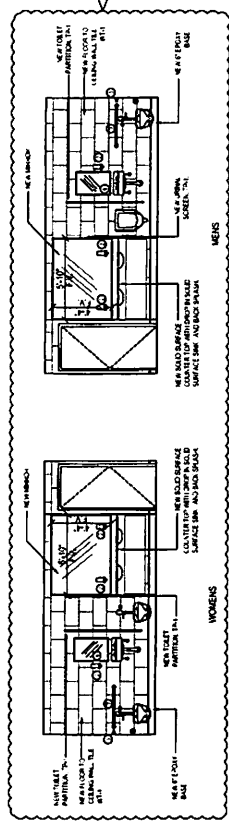
MC Blanchard Building
Food Service and
Restroom Renovation
Pensacola, FL 32502
GMC Project #: APN190993

ISSUE	DATE
REVISION 1	02-05-2020
REVISION 2	02-05-2021
DRAWN BY	
CHECKED BY	

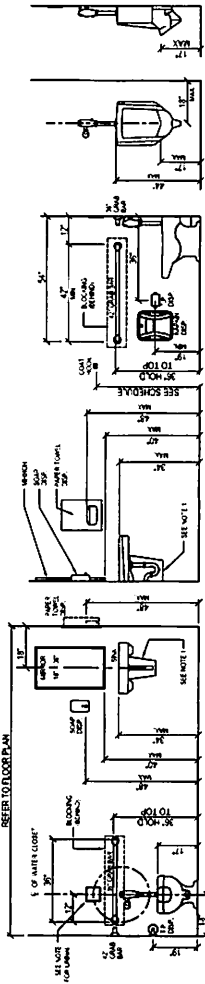
720 Bayside Parkway, Suite 200
Pensacola, FL 32502
T: 850-452-0706
GMCLETWORK.COM
Orville Steven Arrington -
Qualifying Agent
FL Architect A# 0009953



A ENLARGED RESTROOM PLAN
M10 SCALE: 1/4" = 1'-0"



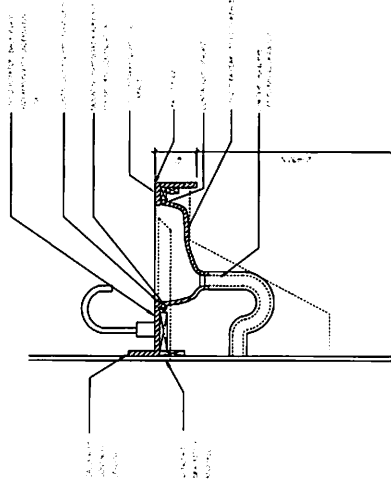
B RESTROOM ELEVATIONS
M10 SCALE: 1/4" = 1'-0"



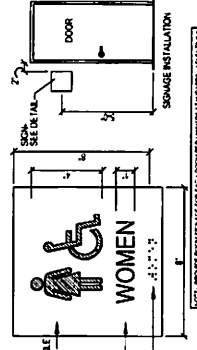
C RESTROOM ELEVATIONS
M10 SCALE: 1/4" = 1'-0"

NO.	DESCRIPTION	REMARKS
01	TOILET ACCESSORY SCHEDULE	
02	TOILET	SEE SCHEDULE
03	TOILET PAPER DISPENSER	SEE SCHEDULE
04	TOILET BRUSH	SEE SCHEDULE
05	TOILET SEAT	SEE SCHEDULE
06	TOILET BRUSH HOLDER	SEE SCHEDULE
07	TOILET PAPER	SEE SCHEDULE
08	TOILET BRUSH	SEE SCHEDULE
09	TOILET SEAT	SEE SCHEDULE
10	TOILET BRUSH HOLDER	SEE SCHEDULE
11	TOILET PAPER	SEE SCHEDULE
12	TOILET BRUSH	SEE SCHEDULE
13	TOILET SEAT	SEE SCHEDULE
14	TOILET BRUSH HOLDER	SEE SCHEDULE
15	TOILET PAPER	SEE SCHEDULE
16	TOILET BRUSH	SEE SCHEDULE
17	TOILET SEAT	SEE SCHEDULE
18	TOILET BRUSH HOLDER	SEE SCHEDULE
19	TOILET PAPER	SEE SCHEDULE
20	TOILET BRUSH	SEE SCHEDULE
21	TOILET SEAT	SEE SCHEDULE
22	TOILET BRUSH HOLDER	SEE SCHEDULE
23	TOILET PAPER	SEE SCHEDULE
24	TOILET BRUSH	SEE SCHEDULE
25	TOILET SEAT	SEE SCHEDULE
26	TOILET BRUSH HOLDER	SEE SCHEDULE
27	TOILET PAPER	SEE SCHEDULE
28	TOILET BRUSH	SEE SCHEDULE
29	TOILET SEAT	SEE SCHEDULE
30	TOILET BRUSH HOLDER	SEE SCHEDULE
31	TOILET PAPER	SEE SCHEDULE
32	TOILET BRUSH	SEE SCHEDULE
33	TOILET SEAT	SEE SCHEDULE
34	TOILET BRUSH HOLDER	SEE SCHEDULE
35	TOILET PAPER	SEE SCHEDULE
36	TOILET BRUSH	SEE SCHEDULE
37	TOILET SEAT	SEE SCHEDULE
38	TOILET BRUSH HOLDER	SEE SCHEDULE
39	TOILET PAPER	SEE SCHEDULE
40	TOILET BRUSH	SEE SCHEDULE
41	TOILET SEAT	SEE SCHEDULE
42	TOILET BRUSH HOLDER	SEE SCHEDULE
43	TOILET PAPER	SEE SCHEDULE
44	TOILET BRUSH	SEE SCHEDULE
45	TOILET SEAT	SEE SCHEDULE
46	TOILET BRUSH HOLDER	SEE SCHEDULE
47	TOILET PAPER	SEE SCHEDULE
48	TOILET BRUSH	SEE SCHEDULE
49	TOILET SEAT	SEE SCHEDULE
50	TOILET BRUSH HOLDER	SEE SCHEDULE

D TOILET ACCESSORY SCHEDULE
M10 SCALE: 1/4" = 1'-0"



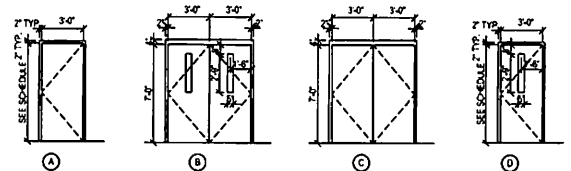
E TYPICAL VANITY DETAIL
M10 SCALE: 1/4" = 1'-0"



F ROOM SIGNAGE
M10 SCALE: 1/4" = 1'-0"

G TOILET ACCESSORY SCHEDULE
M10 SCALE: 1/4" = 1'-0"

DOOR, FRAME, AND HARDWARE SCHEDULE								
DOOR NO.	SIZE	DOOR TYPE	DOOR MATERIAL	FRAME MATERIAL	HW SET	FIRE RATING	UNDER-CUT	COMMENTS
214E	3'-0" x 7'-0" x 1'-0"	C	HOLLOW METAL	HOLLOW METAL	1			EMERGENCY EXIT
214A	3'-0" x 7'-0" x 1'-0"	A	SOLID CORE WOOD	HOLLOW METAL	4	1		
214B	3'-0" x 7'-0" x 1'-0"	B	SOLID CORE WOOD	HOLLOW METAL	4	1		
214C	3'-0" x 7'-0" x 1'-0"	D	SOLID CORE WOOD	HOLLOW METAL	4	1		
214D	3'-0" x 7'-0" x 1'-0"	A	SOLID CORE WOOD	HOLLOW METAL	4	1		



1 DOOR AND FRAME TYPES
SCALE: 1/4" = 1'-0"

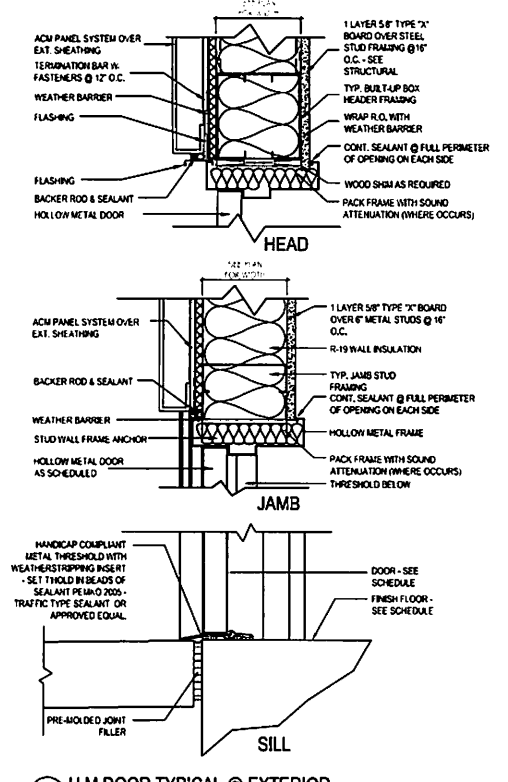
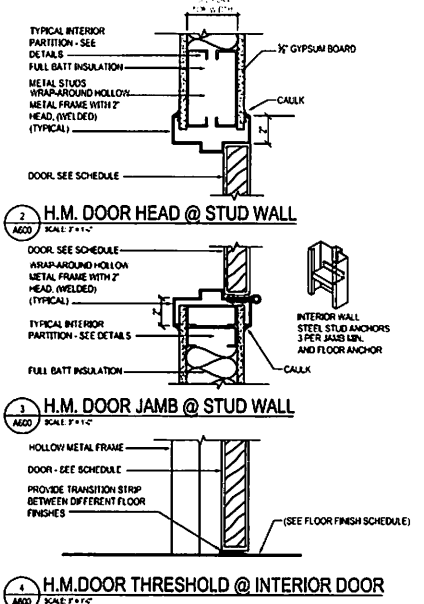
A: FLUSH SOLID CORE WOOD (SINGLE) HOLLOW METAL FRAME
 B: FLUSH SOLID CORE WOOD (DOUBLE) WITH FIRE SAFETY GLAZING HOLLOW METAL FRAME
 C: HOLLOW METAL (DOUBLE) HOLLOW METAL FRAME SEE S4000 FOR HEAD JAMB AND SILL DETAILS IN ACCORDANCE WITH FLORIDA PRODUCT APPROVAL # FL 3001
 D: FLUSH SOLID CORE WOOD (SINGLE) WITH FIRE SAFETY GLAZING HOLLOW METAL FRAME

HARDWARE SET 1	HARDWARE SET 2	HARDWARE SET 3	HARDWARE SET 4
PAR EXTERIOR DOORS	SINGLE INTERIOR DOOR	PAIR INTERIOR DOORS	SINGLE INTERIOR DOOR (STORAGE)
2 EA. EXIT DEVICE	1 EA. LEVER LOCKSET	1 EA. LEVER LOCKSET	1 EA. LOCKSET
6 EA. HINGES	3 EA. HINGES	6 EA. HINGES	3 EA. HINGES
2 EA. CLOSERS	2 EA. CLOSERS	2 EA. CLOSERS	1 EA. CLOSER
2 EA. STOPS	2 EA. STOPS	2 EA. STOPS	1 WALL / FLOOR STOP
3 EA. SILENCERS	3 EA. SILENCERS	3 EA. SILENCERS	3 EA. SILENCERS
2 EA. PROTECTION PLATES			
WEATHERSTRIPPING			
THRESHOLD			

ROOM FINISH SCHEDULE													
ROOM NO.	ROOM NAME	FLOOR											NOTES
		FLOOR	NORTH WALL	EAST WALL	SOUTH WALL	WEST WALL	CEILING						
214E	CORRIDOR	ETR	ETR	ETR	ETR	ETR	ETR	ETR	ETR	ETR	ETR	ETR	
214A	CORRIDOR	ETR	ETR	ETR	ETR	ETR	ETR	ETR	ETR	ETR	ETR	ETR	
214B	WOMEN'S RESTROOM	ETR	ETR	WFL	WFL	WFL	WFL	WFL	WFL	WFL	WFL	ETR	ETR
214C	MEN'S RESTROOM	ETR	ETR	WFL	WFL	WFL	WFL	WFL	WFL	WFL	WFL	ETR	ETR
214D	CORRIDOR	ETR	ETR	ETR	ETR	ETR	ETR	ETR	ETR	ETR	ETR	ETR	
223C	STORAGE	LVF-1	LVF-1	GBPT	GBPT	GBPT	GBPT	GBPT	GBPT	GBPT	GBPT	SAC	
224C	LUNCHROOM	LVF-1	LVF-1	GBPT	GBPT	GBPT	GBPT	GBPT	GBPT	GBPT	GBPT	SAC	
227E	SEATING	LVF-1	LVF-1	GBPT	GBPT	GBPT	GBPT	GBPT	GBPT	GBPT	GBPT	EXP	SEE GENERAL NOTE "E"
228C	REPT	ETR	ETR	WFL	WFL	WFL	WFL	WFL	WFL	WFL	WFL	WFL	
228E	KITCHEN	ETR	ETR	WFL	WFL	WFL	WFL	WFL	WFL	WFL	WFL	WFL	

GENERAL NOTES:

- PART ALL FINISHING CHASE ACCESS DOORS TO MATCH ADJACENT WALL
- PROVIDE STAINLESS STEEL TRANSITION STRIPS AT ALL CHANGES OF FLOOR TYPE
- PROVIDE STAINLESS STEEL CORNER GUARDS AT ALL CHANGES OF WALL TYPE
- PAINT ALL EXPOSED ROOF STRUCTURE WITH BEARING PIPING CONDUIT ETC. FLAT BLACK



170 Blanchard Building, Suite 200
Pensacola, FL 32502
T 850.432.0705
G.M.C.H.T@GMC.COM
Gerald Steven Jamison -
Qualifying Agent
FL Architect #000993

DATE	ISSUE	REVISION	DRAWN BY	CHECKED BY
10-05-2007	PERMIT SET			
06-07-2007	REVISION 1			

MC Blanchard Building
Food Service and
Restroom Renovation
190 West Government St.
Pensacola, FL 32502
GMC Project #: APN190093

Door and Finish
Schedules
A600