

ISSUE	DATE
	02-05-2020

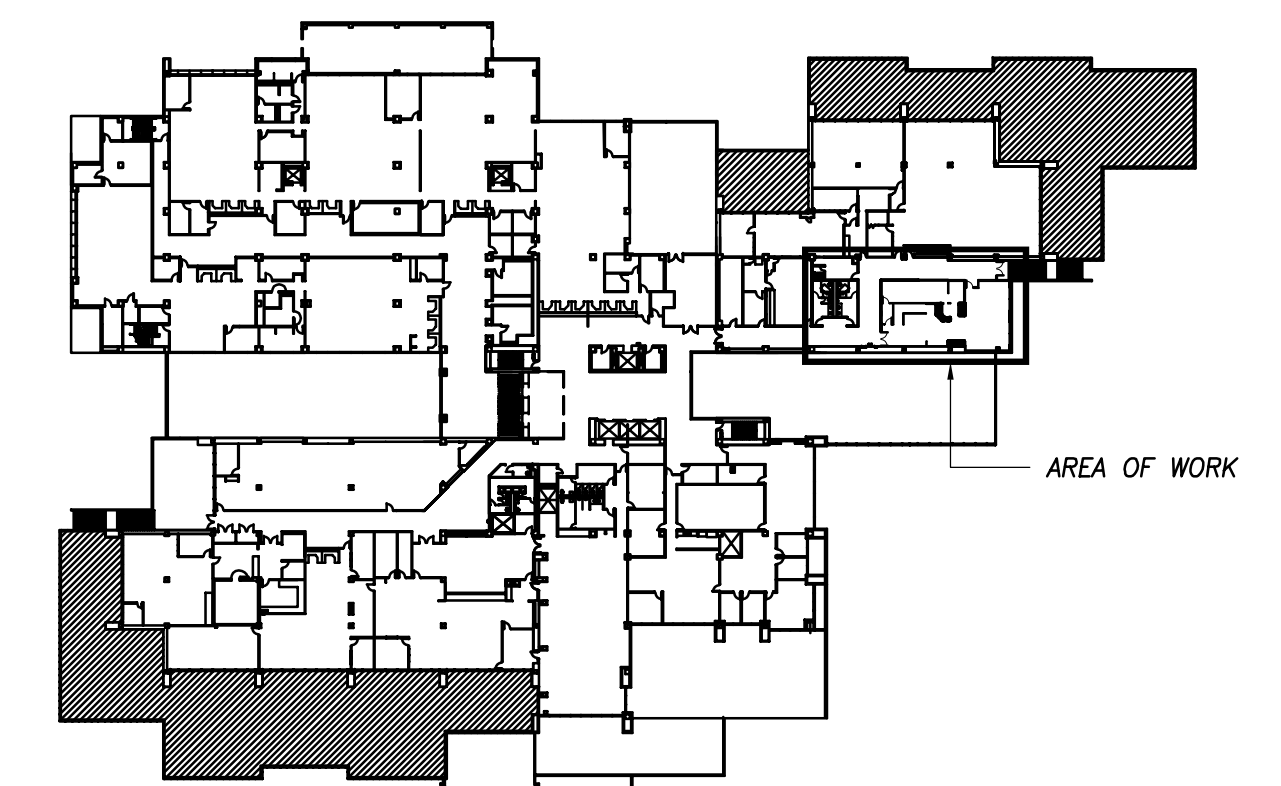
MC Blanchard Building  
 Food Service and  
 Restroom Renovation  
 190 West Government St.  
 Pensacola, FL 32502  
 GMC Project #: APN190093

**PROFESSIONAL ENGINEER**  
 STATE OF FLORIDA  
 NO. 86070  
 2-10-2021  
 Stephen W. Leonard, PE  
 FL Lic. No. 06370

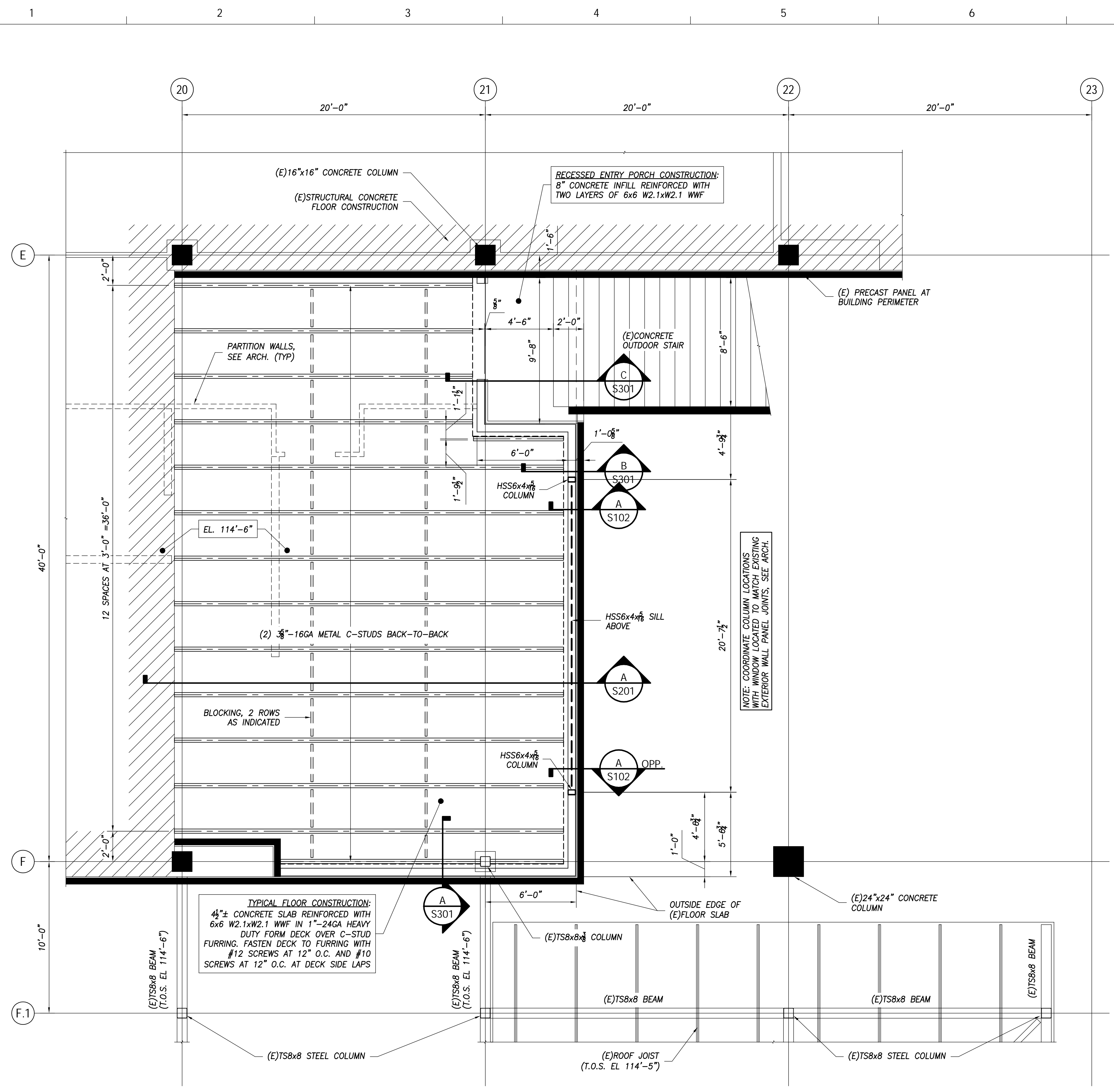
GENERAL NOTES AND  
 FLOOR FRAMING PLAN  
**S101**

### GENERAL STRUCTURAL NOTES:

- MATERIALS SPECIFICATIONS:**
  - CONCRETE: 3,000 PSI AT 28 DAYS
  - REINFORCING STEEL: ASTM A615 GRADE 60
  - WELDED WIRE FABRIC: ASTM A185 (FLAT SHEETS)
  - STR STEEL (W): ASTM A992
  - STR STEEL (HSS): ASTM A500 GRADE B
  - MISC STR STEEL: ASTM A36
  - HIGH STRENGTH BOLTS: ASTM A325
  - ANCHOR BOLTS: ASTM F1554, GRADE 36 OR ASTM A307
  - ROOF DECK: 1 1/2", 18 GAUGE TYPE B G-90 GALV.
  - HEAVY DUTY FORM DECK: 1", 24 GAUGE GALV. TYPE C
  - LIGHT STEEL FRAMING: ASTM A1003, STRUCTURAL GRADE G90 GALVANIZED - SEE NOTE 5 BELOW
  - 6"-16GA C-STUD (600S162-54)
  - 6"-16GA TRACK (600T125-54)
  - 3/8"-16GA C-STUD (362S162-54)
  - 3/8"-16GA TRACK (362T125-54)
  - HIGH-STRENGTH EPOXY: DEWALT PURE110+ OR EQUIVALENT
  - CONCRETE SCREW ANCHORS: SIMPSON STRONG-TIE TITEN HD GALVANIZED
  - CONCRETE EXPANSION ANCHORS: SIMPSON STRONG-TIE TITEN HD GALVANIZED
  - POWER DRIVEN FASTENERS: HILTI X-U
- STRUCTURES DESIGNED FOR WIND LOADING IN ACCORDANCE WITH ASCE 7-16 STANDARD CODE AS FOLLOWS:
  - ULTIMATE DESIGN WIND SPEED = 165 MPH
  - NOMINAL DESIGN WIND SPEED = 128 MPH
  - BUILDING RISK CATEGORY III
  - EXPOSURE D
  - INTERNAL PRESSURE COEFFICIENT = ±0.18 (ENCLOSED BUILDING)
  - MAXIMUM COMPONENT AND CLADDING ULTIMATE WIND LOAD PRESSURES: WALLS +80/-164 PSF AND ROOF +33/-227 PSF
- THE PRIMARY STRUCTURAL SYSTEM OF THIS BUILDING ADDITION HAS BEEN DESIGNED IN ACCORDANCE WITH THE 2020 FLORIDA BUILDING CODE 7TH EDITION.
- ALL ELEVATIONS INDICATED ON STRUCTURAL DRAWINGS ARE ABOVE OR BELOW A FINISHED GROUND FLOOR ELEVATION OF +100'-0".
- ALL EXTERIOR LIGHT GAGE FRAMING SHOWN ON STRUCTURAL AND ARCHITECTURAL DRAWINGS SHALL BE 16 GAUGE MINIMUM AND HAVE A G-90 GALVANIZED COATING. FASTEN TRACK TO STUD FLANGES WITH #10 SMS AT 16" O.C. MINIMUM.



2 BUILDING KEY PLAN - SECOND FLOOR  
 N.T.S.



1 NEW WORK FLOOR FRAMING PLAN  
 Scale: 1/4" = 1'-0"

This item has been digitally signed and sealed by:  
 Printed copies of this document are not considered signed and sealed. And, the signature must be verified on any electronic copies.