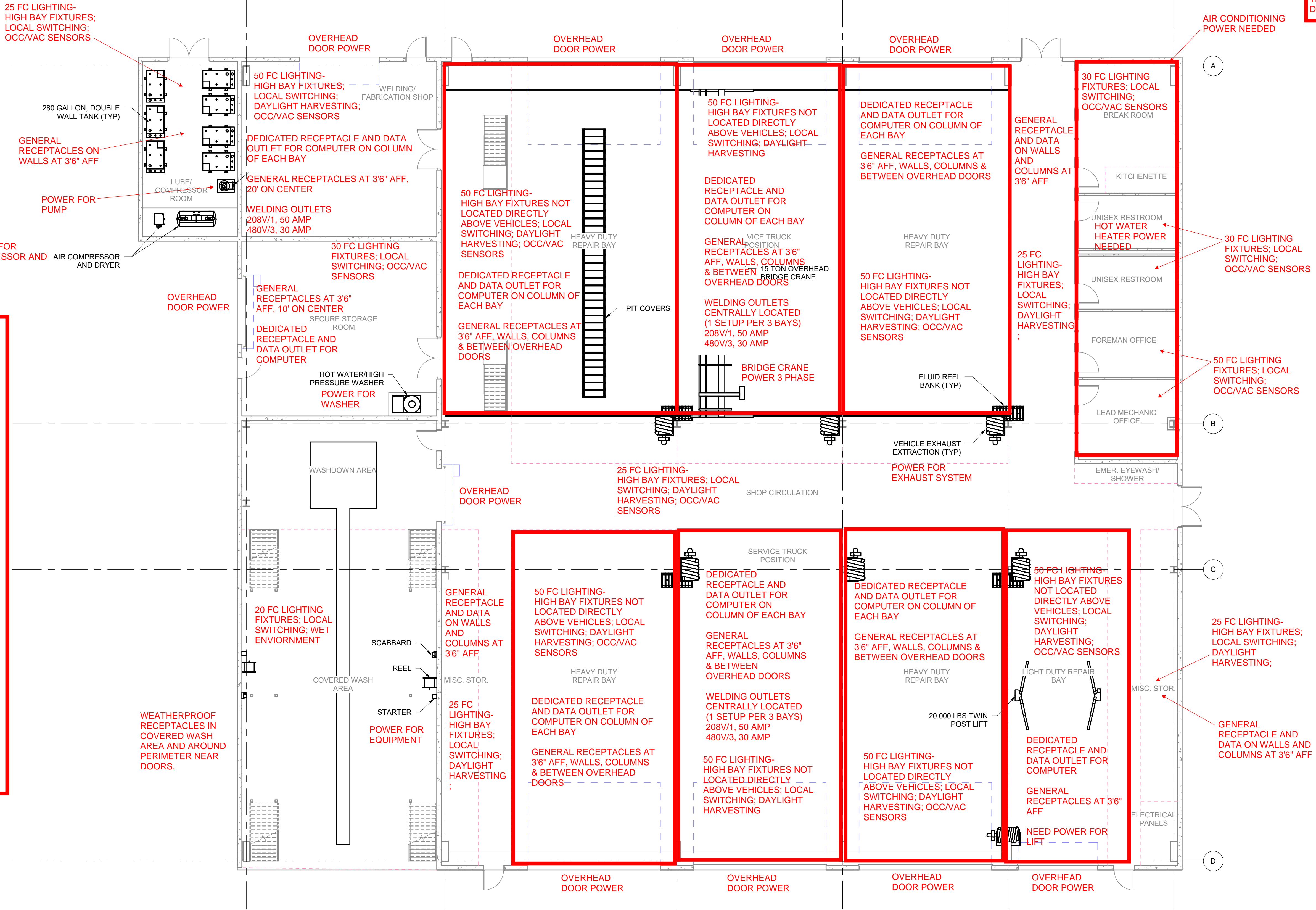


NOTE: THIS PLAN IS ONLY A GENERAL SUMMARY OF INFO TAKEN FROM THE RFP TO HELP VISUALIZE THE REQUIREMENTS. THIS SHEET IS NOT COMPREHENSIVE AND DOES NOT SHOW ALL REQUIREMENTS.



MINIMUM EQUIPMENT REQUIRING POWER IN WELDING SHOP:

1. MIG WELDER
2. AC/DC WELDER
3. PLASMA CUTTER
4. BAND SAW
5. CUT-OFF SAW
6. BUFFER/GRINDER
7. DRILL PRESS
8. UNKNOWN?

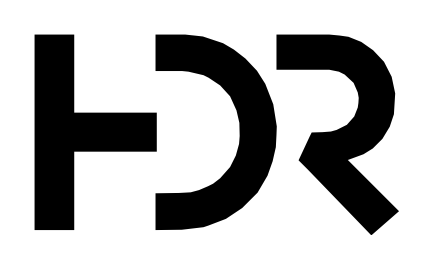
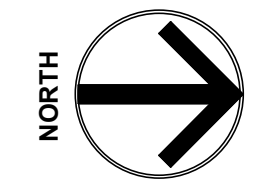
INSTALL EXTERIOR BUILDING LIGHTING AT ALL EXTERIOR DOORS.

ALL INSPECTION PITS WILL HAVE EXPLOSION PROOF (CLASS 1, DIV 2) LIGHTING IN PIT. LIGHT WILL BE ANGLED TO SHINE UP AT THE UNDERSIDE OF EQUIPMENT.

INTERIOR AND EXTERIOR PUSH BUTTON CONTROLS ON ALL OVERHEAD DOORS

EMERGENCY LIGHTING WILL BE INTEGRAL TO FIXTURES. EXIT SIGNS WILL HAVE INTEGRAL BATTERIES

ALL LIGHTING WILL BE LED.



ISSUE	DATE	DESCRIPTION

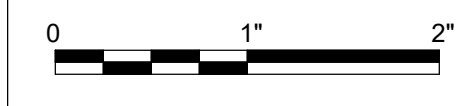
PROJECT MANAGER	M. ROBERTS, P.E.
DESIGNED BY	J. TRIPP
DRAWN BY	J. TRIPP
CHECKED BY	J. LOHR
PROJECT NUMBER	10258930

**PRELIMINARY
NOT FOR
CONSTRUCTION
OR
RECORDING**



**CENTRAL LANDFILL
MAINTENANCE FACILITY
SANTA ROSA COUNTY,
FLORIDA**

EQUIPMENT LAYOUT



FILENAME SRCED Landfill Maint Bldg
SCALE 1/8" = 1'-0"

SHEET
A101

I:\depn\mddgs01_intranet\hdm\mddgs\PROJ\Public\MDG\PROJ\PROJECTS\10258930 - Santa Rosa County Central Landfill Maintenance Facility\5.0_Proj_Dev\5.2_1.4_Master_Planning\SCRED Landfill Maint Bldg.rvt 3/17/2022 9:59:41 AM