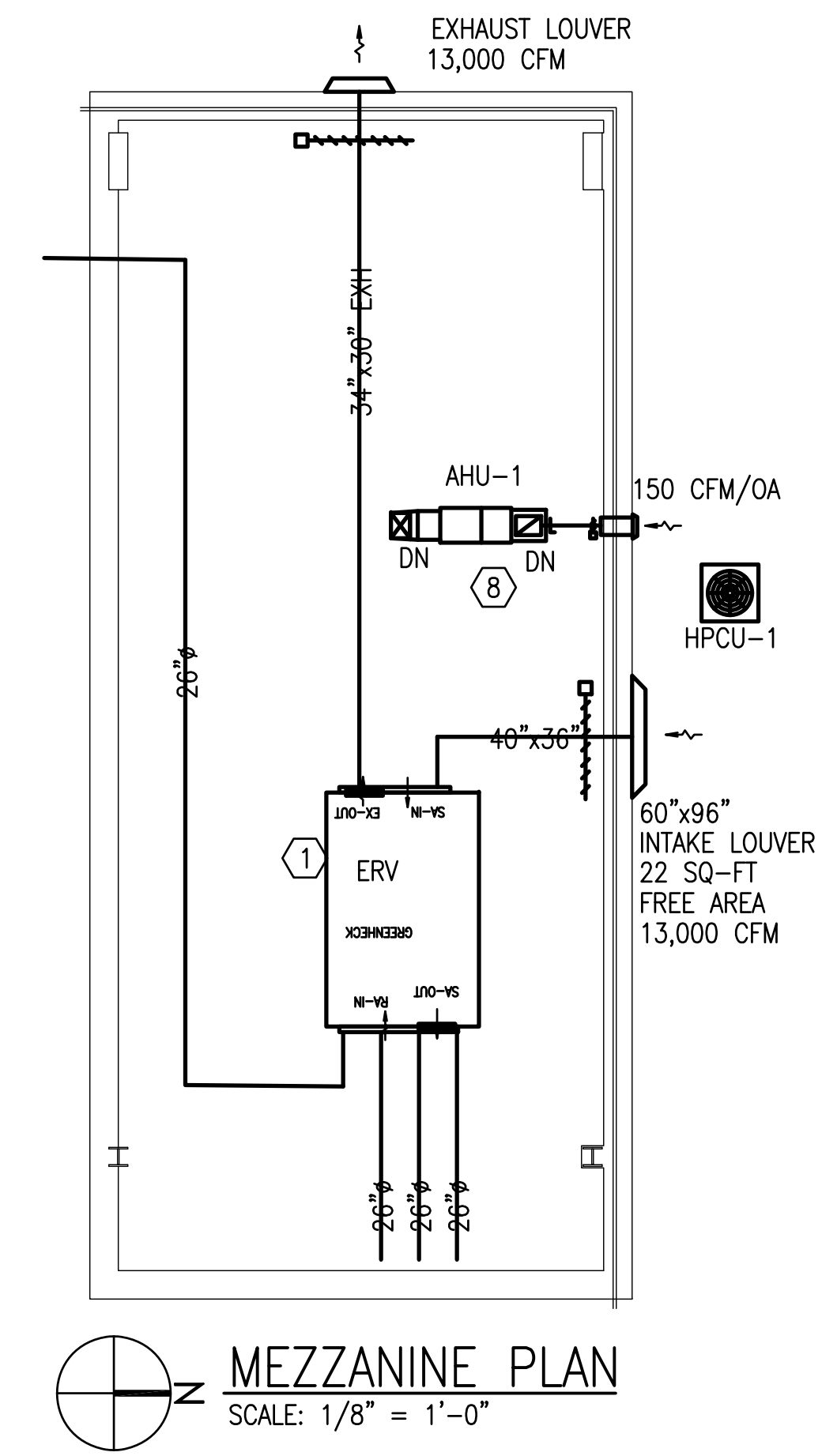


MECHANICAL PLAN
SCALE: 1/8" = 1'-0"



MEZZANINE PLAN
SCALE: 1/8" = 1'-0"

GENERAL NOTES:

PROVIDE APPROVED FLAMMABLE GAS DETECTION ALARM / MONITORING SYSTEMS FOR THE REPAIR GARAGE AREA. SEE FIRE PROTECTION SHEETS FOR FIRE ALARM AND GAS DETECTION SYSTEM DETAILS. ACTIVATION OF THE SYSTEM SHALL RESULT IN AUDIBLE AND VISUAL ALARM SIGNAL IN THE REPAIR AND STORAGE AREAS. PROVIDE A PHONE LINE FOR THE SYSTEM FOR AUTHORITY NOTIFICATION OF AN ALARM. INTERLOCK SYSTEM TO AN EXHAUST AND MAKE-UP AIR SYSTEM TO EFFECTIVELY REMOVE VAPOR ACCUMULATIONS FROM ALL PARTS OF THE SHOP AREA AND TRENCH WORK AREA. THE INFRARED UNIT HEATERS SHALL BE LOCKED OUT IF THE DETECTION SYSTEM IS ENGAGED.

NOTES:

- ① - INSTALL ERV UNIT ON MEZZANINE. ROUTE EXHAUST OUTLET AND OA INTAKE TO LOUVERS ON EXTERIOR WALL, MIN. 10' APART. PROVIDE MAKE-UP DOWN THROUGH CENTER OF BUILDING.
- ② - 18" Ø EXHAUST FOR ERV TO TERMINATE 12" AFF.
- ③ - PROVIDE (25, IRH-1) INFRARED UNIT HEATERS WITH SHUT-DOWN RELAY TO CONNECT INTO GAS DETECTION SYSTEM. ALLOW CLEARANCE BELOW HEATER FOR OVERHEAD CRANE AND OTHER OBSTACLES. SUSPEND IR HEATER FROM STRUCTURE WITH MANUFACTURER APPROVED HANGER SYSTEM. MIN. MOUNTING HEIGHT FOR HEATER ---'-0" AFF.
- ④ - OVERHEAD INDUSTRIAL CEILING FAN. AVOID OVERHEAD CRANE. SUSPEND FROM BUILDING STRUCTURE PER MANUFACTURERS INSTRUCTIONS.
- ⑤ - PROVIDE PIT VENTILATION AND ROUTE TO EXTERIOR OF BUILDING. FAN TO BE TIED INTO GAS DETECTION SYSTEM.
- ⑥ - PROVIDE (7, VEF-1) VEHICLE EXHAUST REMOVAL SYSTEMS WITH INTEGRAL HOSE REALS, FANS AND CONTROLS AND ROUVR VENTS TO THE EXTERIOR OF THE BUILDING.
- ⑦ - PROVIDE AND INSTALL 3 NEW 48"x48" (MIN. 6.4 SQ-FT FREE AREA/EA) WALL LOUVERS WITH AUTOMATIC MOTORIZED ACTUATORS AND DAMPERS IN THE SOUTH EXTERIOR SHOP WALL.
- ⑧ - INSTALL AHU-1 ON MEZZANINE, ROUTE SUPPLY AND RETURN DUCTS DOWN THROUGH MEZZANINE IN SPACE ABOVE OFFICE CEILING.