

PROJECT ISSUES:
SCHEMATIC DESIGN: 6/25/2023
DESIGN DEVELOPMENT: 8/21/2023
100%
CONSTRUCTION 11/17/2023
DOCUMENTS:

REVISION 1 - 2/20/24 CIVIL ONLY
REVISION 2 - 2/28/24 RFI REVISIONS
REVISION 3 - 3/21/24 CP COMMENTS
CONFORMANCE SET 4/16/2024

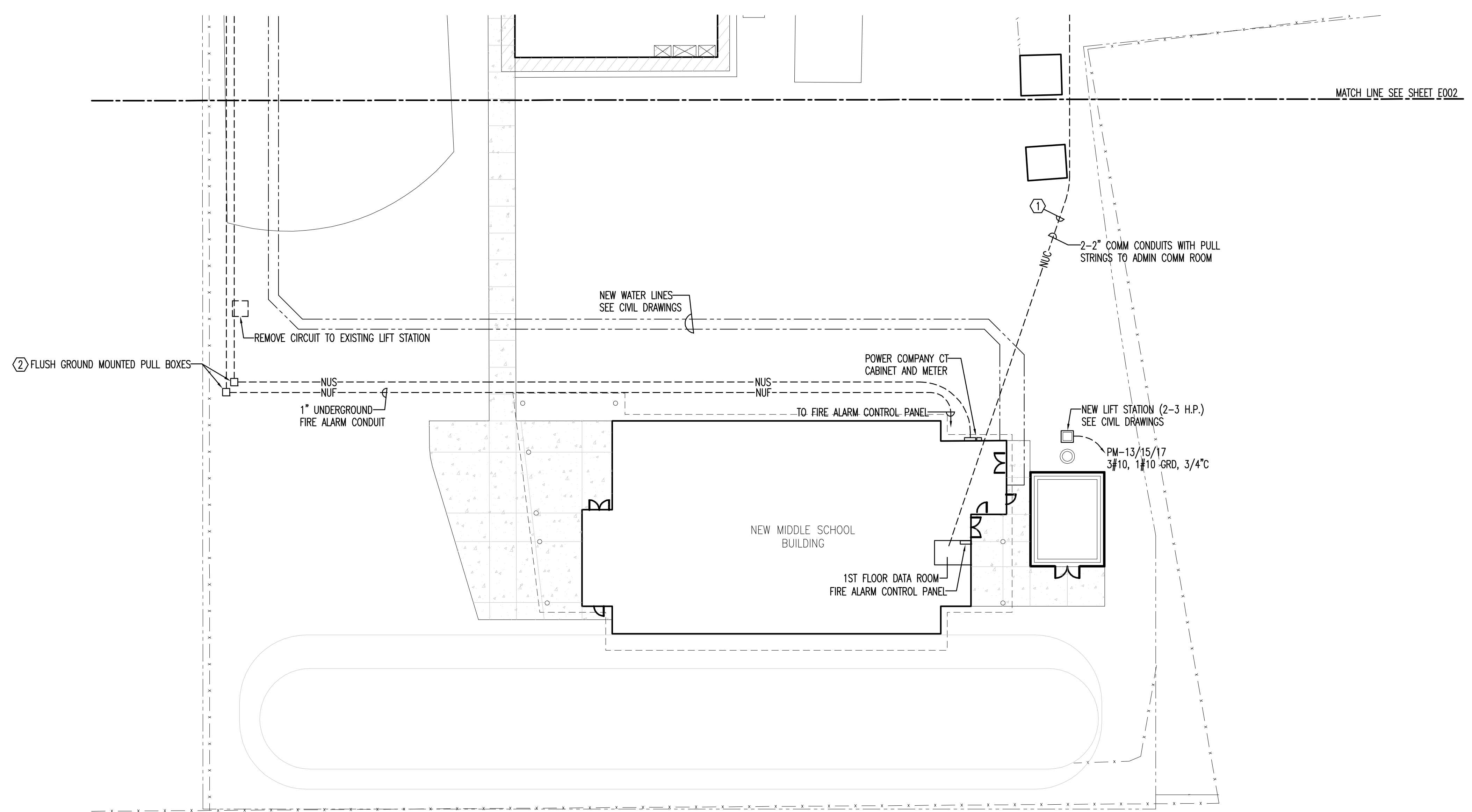
PROJECT TEAM:
CIVIL
KENNETH HORNE & ASSOCIATES
LANDSCAPING
FORME DESIGN GROUP
STRUCTURAL
MCCARTHY ENGINEERING
ARCHITECTURAL
CALDWELL ASSOCIATES
FIRE PROTECTION
H.M. YONGE & ASSOCIATES
MECHANICAL/PLUMBING
H.M. YONGE & ASSOCIATES
ELECTRICAL
KLOCKE ASSOCIATES

PROJECT:
**CREATIVE LEARNING
ACADEMY**

**3151 HYDE PARK RD.
PENSACOLA, FL**

PROJECT NO. : 22028
SHEET TITLE:
PARTIAL ELECTRICAL SITE PLAN

SHEET NUMBER:
E001



PARTIAL ELECTRICAL SITE PLAN
SCALE: 1" = 20'

KEY NOTES

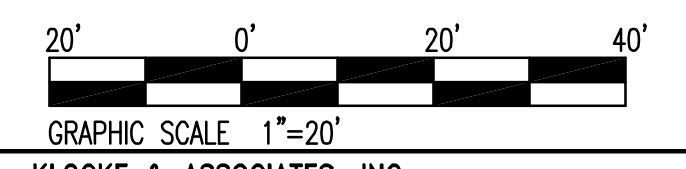
- ① ROUTING SHOWN IS APPROXIMATE. FIELD ROUTE IN COORDINATION WITH EXISTING UTILITIES.
- ② BASIS OF DESIGN QUAZITE PG SERIES
 - POWER, 24" X 36" X 36" WITH TIER 15 COVER. OPEN BOTTOM SET OVER CRUSHED ROCK LOGO "ELECTRIC".
 - FIRE ALARM, 11" X 18" X 18" WITH TIER 15 COVER OPB BOTTOM SET OVER CRUSHED ROCK LOGO "FIRE ALARM".

GENERAL NOTE

SEE CIVIL DRAWINGS FOR ADDITIONAL UTILITIES. COORDINATE ALL NEW ELECTRICAL SYSTEMS.

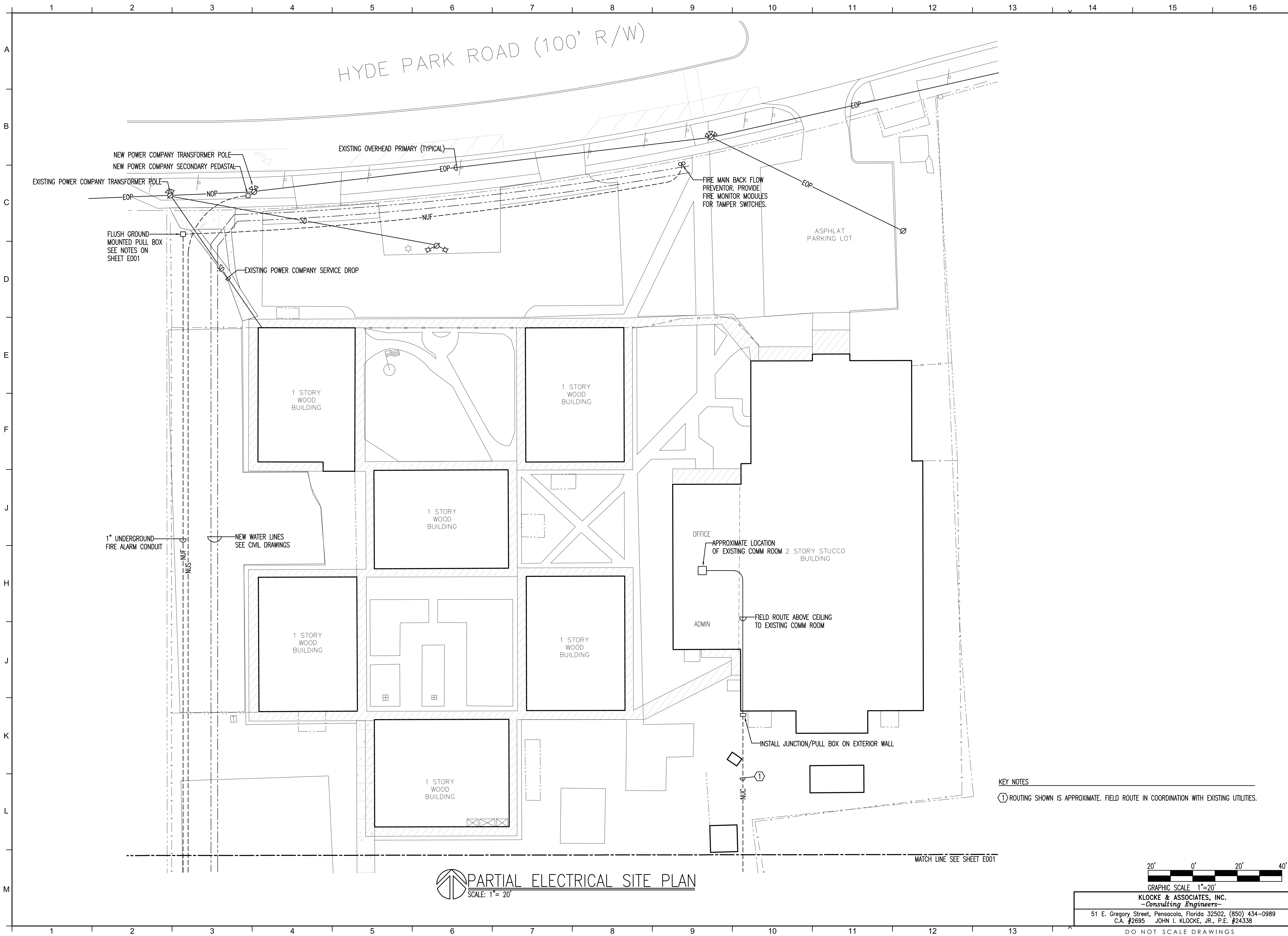
ELECTRICAL SITE LEGEND

- EOP— EXISTING OVERHEAD PRIMARY
- NOP— NEW OVERHEAD PRIMARY
- NUS--- NUW UNDERGROUND SECONDARY
- NUC--- NEW UNDERGROUND COMMUNICATIONS
- NUF--- NEW UNDERGROUND FIRE ALARM
- SD— EXISTING SECONDARY SERVICE DROP
- BRANCH CIRCUIT RUN UNDERGROUND
- ⊕ TRANSFORMER POLE



KLOCKE & ASSOCIATES, INC.
—Consulting Engineers—
51 E. Gregory Street, Pensacola, Florida 32502, (850) 434-0989
C.A. #2695 JOHN I. KLOCKE, JR., P.E. #24338

DO NOT SCALE DRAWINGS



PROJECT ISSUES:
 SCHEMATIC DESIGN: 6/25/2023
 DESIGN DEVELOPMENT: 8/21/2023
 100% CONSTRUCTION DOCUMENTS: 11/17/2023
 REVISION 1 - 2/20/24 CIVIL ONLY
 REVISION 2 - 2/28/24 RFI REVISIONS
 REVISION 3 - 3/21/24 CP COMMENTS
 CONFORMANCE SET 4/16/2024

PROJECT TEAM:
 CIVIL: KENNETH HORNE & ASSOCIATES
 LANDSCAPING: FORME DESIGN GROUP
 STRUCTURAL: MCCARTHY ENGINEERING
 ARCHITECTURAL: CALDWELL ASSOCIATES
 FIRE PROTECTION: H.M. YONGE & ASSOCIATES
 MECHANICAL/PLUMBING: H.M. YONGE & ASSOCIATES
 ELECTRICAL: KLOCKE ASSOCIATES

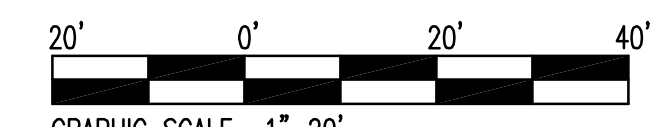
PROJECT:
CREATIVE LEARNING ACADEMY

**3151 HYDE PARK RD.
 PENSACOLA, FL**

PROJECT NO.: 22028
 SHEET TITLE:
 PARTIAL ELECTRICAL SITE PLAN

SHEET NUMBER:
E002

KEY NOTES
 ① ROUTING SHOWN IS APPROXIMATE. FIELD ROUTE IN COORDINATION WITH EXISTING UTILITIES.



KLOCKE & ASSOCIATES, INC.
 -Consulting Engineers-
 51 E. Gregory Street, Pensacola, Florida 32502, (850) 434-0989
 C.A. #2695 JOHN I. KLOCKE, JR., P.E. #24338

PARTIAL ELECTRICAL SITE PLAN
 SCALE: 1" = 20'

PROJECT ISSUES:
SCHEMATIC DESIGN: 6/25/2023
DESIGN DEVELOPMENT: 8/21/2023
100%
CONSTRUCTION DOCUMENTS: 11/17/2023

REVISION 1 - 2/20/24 CIVIL ONLY
REVISION 2 - 2/28/24 RFI REVISIONS
REVISION 3 - 3/21/24 CP COMMENTS

CONFORMANCE SET 4/16/2024

PROJECT TEAM:

CIVIL
KENNETH HORNE & ASSOCIATES
LANDSCAPING
FORME DESIGN GROUP
STRUCTURAL
MCCARTHY ENGINEERING
ARCHITECTURAL
CALDWELL ASSOCIATES
FIRE PROTECTION
H.M. YONGE & ASSOCIATES
MECHANICAL/PLUMBING
H.M. YONGE & ASSOCIATES
ELECTRICAL
KLOCKE ASSOCIATES

PROJECT:
CREATIVE LEARNING
ACADEMY

3151 HYDE PARK RD.
PENSACOLA, FL

PROJECT NO. : 22028
SHEET TITLE:

LEGED, RISER DIAGRAM,
FIXTURE SCHEDULE

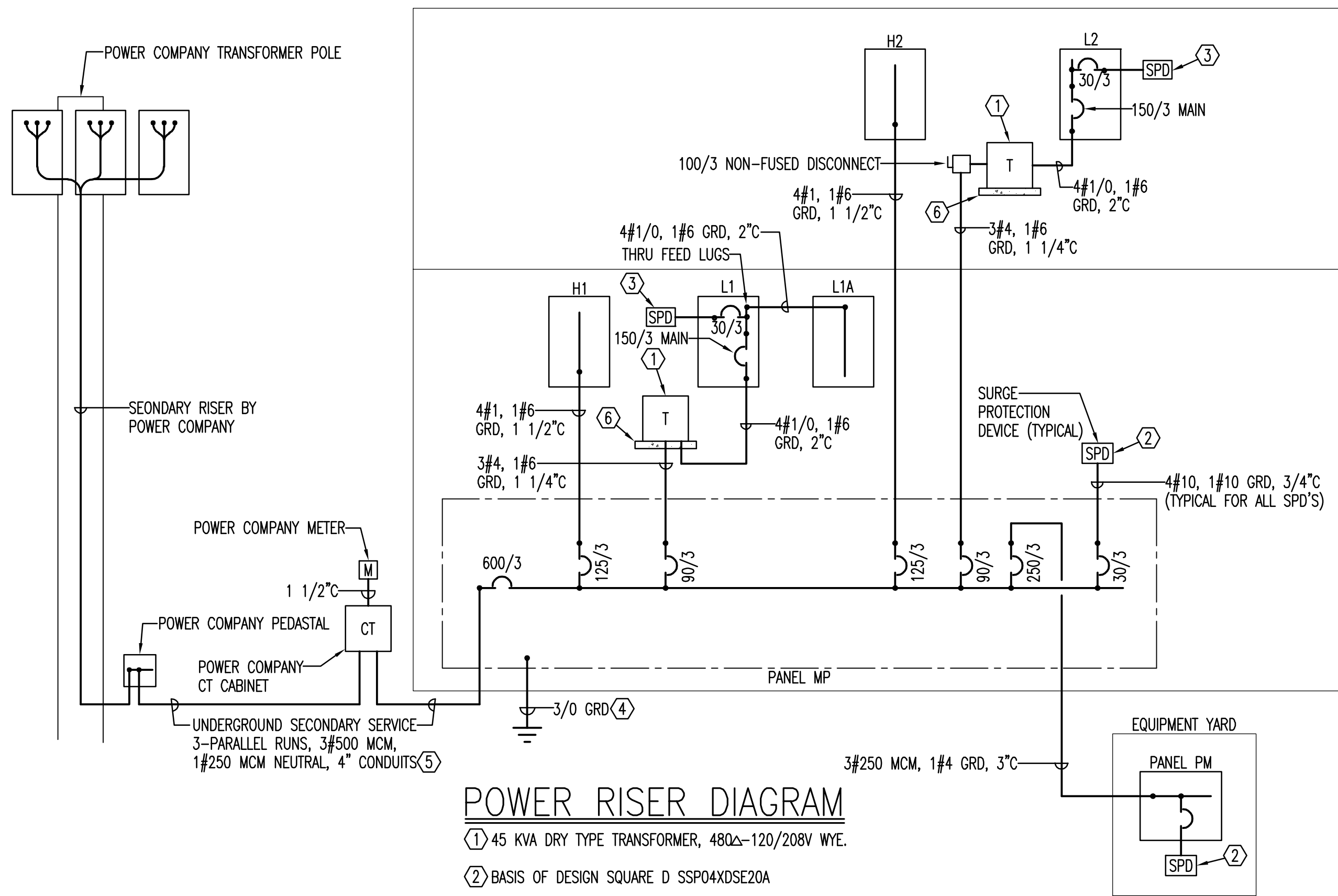
SHEET NUMBER:

E003

ELECTRICAL LEGEND

- NOMINAL 2'x2' LED LIGHTING FIXTURE
- NOMINAL 2'x2' LED LIGHTING FIXTURE CONNECTED TO EMERGENCY INVERTER
- NOMINAL 2'x4' LED LIGHTING FIXTURE
- NOMINAL 2'x4' LED LIGHTING FIXTURE CONNECTED TO EMERGENCY INVERTER
- LINEAR LED LIGHTING FIXTURE
- PENDANT MOUNTED LED LIGHTING FIXTURE
- PENDANT MOUNTED LED LIGHTING FIXTURE CONNECTED TO EMERGENCY INVERTER
- WALL BRACKET LED LIGHTING FIXTURE
- SQUARE DOWN LIGHT
- SQUARE DOWN LIGHT CONNECTED TO EMERGENCY INVERTER
- EXIT LIGHT
- SINGLE POLE LIGHTING SWITCH MOUNT 48" AFF
- WALL MOUNTED OCCUPANCY SENSOR BASIS OF DESIGN COOPER GREENGATE ONW-1001-SP MOUNT 48" AFF
- COMBINATION OCCUPANCY SENSOR/DIMMER SWITCH BASIS OF DESIGN WATTSTOPPER/LEGRAND WS-301
- WALL MOUNTED DIGITAL SWITCH MOUNT 48" AFF SEE SHEET E006
- ROOM CONTROLLER MOUNTED ABOVE CEILING
- CEILING MOUNTED OCCUPANCY SENSOR
- DUPLEX RECEPTACLE MOUNT 18" AFF UNLESS NOTED OTHERWISE
- GROUND FAULT CIRCUIT INTERRUPTER RECEPTACLE MOUNT 18" AFF UNLESS NOTED OTHERWISE
- GROUND FAULT CIRCUIT INTERRUPTER RECEPTACLE WITH WEATHERPROOF COVERPLATE
- DUPLEX RECEPTACLE FOR PROMETHEAN BOARD MOUNT NOMINAL 6'-6" AFF (2)
- DUPLEX OUTLET FOR WALL MOUNTED TV NOMINAL 6'-6" AFF (2)
- CORD REEL WITH DUPLEX RECEPTACLE (1)
- QUADPLEX RECEPTACLE MOUNT 18" AFF UNLESS NOTED OTHERWISE
- GROUND FAULT CIRCUIT INTERRUPTER QUADPLEX RECEPTACLE WITH WEATHERPROOF COVERPLATE
- DUPLEX RECEPTACLE MOUNTED ABOVE COUNTER
- GROUND FAULT CIRCUIT INTERRUPTER DUPLEX RECEPTACLE MOUNTED ABOVE COUNTER
- DRYER OUTLET
- TELE/DATA OUTLET MOUNT 18" AFF UNLESS NOTED OTHERWISE STUB 3/4" TO ACCESSIBLE LOCATION ABOVE THE CORRIDOR CEILING.
- ROUGH-IN FOR WALL MOUNTED CCTV OUTLET MOUNT 8'-0" AFF STUB 1" TO ACCESSIBLE LOCATION ABOVE THE CORRIDOR CEILING.
- ROUGH-IN FOR SOFFIT MOUNTED CCTV CAMERA STUB 1" TO ACCESSIBLE LOCATION ABOVE CORRIDOR CEILING (PRIOR TO ROUGH-IN FIELD VERIFY LOCATIONS WITH OWNERS SECURITY CONTRACTOR)
- ROUGH-IN FOR MAGNETIC DOOR LOCK PANIC BUTTON. MOUNT 48" AFF. STUB 3/4" TO ACCESSIBLE LOCATION ABOVE CEILING. COORDINATE WITH ACCESS CONTROL SUBCONTRACTOR.
- ROUGH-IN FOR ACCESS CONTROL SYSTEM CARD READER. MOUNT 48" AFF. STUB 3/4" TO ACCESSIBLE LOCATION ABOVE CEILING. COORDINATE WITH ACCESS CONTROL SUBCONTRACTOR.
- ROUGH-IN FOR PROMETHEAN BOARD COMMUNICATIONS MOUNT NOMINAL 6'-6" AFF (2)
- ROUGH-IN FOR WALL MOUNTED TV MOUNT NOMINAL 6'-6" AFF (2)
- FIRE ALARM SYSTEM WALL MOUNTED SPEAKER/STROBE MOUNT 80" AFF
- WEATHERPROOF FIRE ALARM SYSTEM SPEAKER MOUNT 80" AFF
- FIRE ALARM SYSTEM PULL STATION MOUNT 48" AFF
- FIRE ALARM SYSTEM CEILING MOUNTED SPEAKER/STROBE
- FIRE ALARM SYSTEM CEILING MOUNTED SPEAKER
- FIRE ALARM SYSTEM CEILING MOUNTED STROBE
- FIRE ALARM SYSTEM AREA SMOKE DETECTOR
- FIRE ALARM SYSTEM DUCT MOUNTED SMOKE DETECTOR IN SUPPLY AIR DUCT
- FIRE ALARM SYSTEM HEAT DETECTOR
- FIRE ALARM RELAY
- SPRINKLER SYSTEM FLOW SWITCH
- SPRINKLER SYSTEM TAMPER SWITCH
- PANELBOARD
- NON-FUSED DISCONNECT SWITCH
- FUSED DISCONNECT
- CONDUIT RUN EXPOSED PARALLEL OR PERPENDICULAR TO BUILDING LINES
- CONDUIT RUN CONCEALED ABOVE CEILING OR IN WALLS
- CONDUIT RUN UNDERGROUND OR BELOW SLAB
- HOMERUN TO PANELBOARD ANY CIRCUIT WITHOUT FURTHER DESIGNATION 2#12, 1#12 GRD, 1/2" 3#12, 1#12 GRD, 1/2" ETC. NOTE: ALL CIRCUITS SHALL HAVE SEPARATE NEUTRALS. COMBINE A MAXIMUM OF 3-CIRCUITS IN A SINGLE CONDUIT.

- (1) BASIS OF DESIGN MED REEL MR-152012-D
- (2) VERIFY ROUGH-IN REQUIREMENTS INCLUDING EXACT LOCATION WITH THE ARCHITECT



POWER RISER DIAGRAM

- (1) 45 KVA DRY TYPE TRANSFORMER, 480V-120/208V WYE.
- (2) BASIS OF DESIGN SQUARE D SSP04XDSE20A
- (3) BASIS OF DESIGN SQUARE D SSP02XDSE20A
- (4) CONNECT TO BUILDING STEEL, SLAB STEEL AND METALLIC WATER PIPING
- (5) AT CONTRACTORS OPTION 3-PARALLEL RUNS, 3#600 MCM ALUMINUM, 1#350 MCM ALUMINUM NEUTRAL, 4" CONDUITS
- (6) PROVIDE 4" HIGH CONCRETE HOUSEKEEPING PAD

LIGHTING FIXTURE SCHEDULE

MARK	MANUFACTURER AND CATALOG No.	SOURCE	MOUNTING	REMARKS
L24	METALUX 24CZ2-60-UNV-L835-HCD-1	LED 6000 LUMENS 46.3 WATTS	RECESSED	
L24A	METALUX 24CGT4535C	LED 4268 LUMENS 38.8 WATTS	RECESSED	
L22	METALUX 22CZ2-32-UNV-L835-HCD-1	LED 3200 LUMENS 24.2 WATTS	RECESSED	
L22A	METALUX 22CGT3435C	LED 3449 LUMENS 31.4 WATTS	RECESSED	
LS	METALUX 45T2L4040R	LED 4600 LUMENS 43 WATTS	PENDANT	
LV	METALUX 4VT2-LD5-4-DR-UNV-L840-CD1-WL-SSL	LED 4000 LUMENS 30 WATTS	SURFACE	
LP8	LUMENWERX VIA2ACOP-D-HLO-FH-SW-90-750-35-8'-12-UNV-D1-1-53WAC36W-W	LED 750 LUMENS PER FT 60 WATTS	PENDANT	(1)
LR14	LUMENWERX V1A2R-D-LG0-FH-SW-90-HLO-35-14'-UNV-D1-1C-NA-DTR-W	LED 750 LUMENS PER FT 116 WATTS	RECESSED	
LR21	LUMENWERX V1A2R-D-LG0-FH-SW-90-HLO-35-21'-UNV-D1-1C-NA-DTR-W	LED 750 LUMENS PER FT 174 WATTS	RECESSED	
PA	LUMENWERX POROS-36-ULO-1D-SW-90-5500-35-UNV-D1-1-SUR-COLOR	LED 5000 LUMENS	SURFACE	(2)
RA	HALO PRS415D010-41S-MD-MW-WF	LED 1500 LUMENS 13 WATTS	RECESSED	
RB	HALO LDSQ6C-60-90-35-D010-B26-SQLWW-O-MW	LED 6000 LUMENS 65 WATTS	RECESSED	(3)
RAA	HALO PRS430D010-41S-ND-MW-WF	LED 3000 LUMENS 27 WATTS	RECESSED	
WS	SPECTRUM LIGHTING AR0808GV-PT/PA17ARM-TF-1 3" FROSTED DOME	LED 2700 LUMENS	WALL	
WB	FAIL SAFE B95-LD4-12W-40-CL-UNV-EDC1	LED 1175 LUMENS 12 WATTS	WALL	
⊗	SURE-LITES CX-6-1-WH	LED		

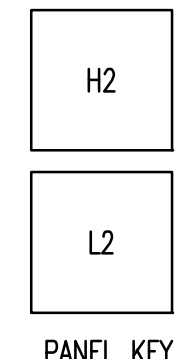
- (1) PROVIDE MATCHING NON-ELECTRIFIED ACOUSTICAL BAFFLES LUMENWERX VIA2ACOBP-8-12-53WAC36-W
- (2) COLOR AS DIRECTED BY INTERIOR DESIGNER
- (3) INSTALL SUCH THAT WALL WASH FEATURE PLACES LIGHT TO THE NORTH

KLOCKE & ASSOCIATES, INC.
-Consulting Engineers-
51 E. Gregory Street, Pensacola, Florida 32502, (850) 434-0989
C.A. #2695 JOHN I. KLOCKE, JR., P.E. #24338

DO NOT SCALE DRAWINGS

BREAKER INTERRUPTING CAPACITY: 10,000		PANEL SCHEDULE H2										BRACED FOR MINIMUM 10,000 AMPS SYMMETRICAL		
480/277V, 3Ø, 4W 225 AMP M.L.O.		SURFACE MOUNTED												
CKT	EQUIPMENT SERVED	BREAKER TRIP POLE			KVA/PHASE			KVA/PHASE			BREAKER POLE TRIP		EQUIPMENT SERVED	CKT
		A	B	C	A	B	C	A	B	C				
1	LIGHTING 2ND FLOOR NORTH	20	1	2.51			4.5	3.0		1	30	TU#25	2	
3	LIGHTING 2ND FLOOR SOUTH	20	1	2.07			4.5			1	20	TU#26	4	
5	TU#21	30	1		4.5					1	30	TU#27	6	
7	TU#22	30	1	4.5			4.5			1	30	TU#28	8	
9	TU#23	30	1		4.5							SPARE	10	
11	TU#24	30	1		4.5							SPARE	12	
13	EMERGENCY INVERTER	20	1	.8						20		SPARE	14	
15	SPACE												16	
17													18	
19													20	
21												SPACE	22	
23													24	
25													26	
27													28	
29													30	
TOTAL CONNECTED KVA		16.81	9.57	15.00										
		A	B	C										

BREAKER INTERRUPTING CAPACITY: 10,000		PANEL SCHEDULE L2										BRACED FOR MINIMUM 10,000 AMPS SYMMETRICAL		
120/208V, 3Ø, 4W 150 AMP MAIN BREAKER		SURFACE MOUNTED												
CKT	EQUIPMENT SERVED	BREAKER TRIP POLE			KVA/PHASE			KVA/PHASE			BREAKER POLE TRIP		EQUIPMENT SERVED	CKT
		A	B	C	A	B	C	A	B	C				
1	RECEPT. MECHANICAL 219	20	1	.18			.72	.72		1	20	RECEPT. CLASSROOM 206	2	
3	CLASSROOM 205			.9			.72					CLASSROOM 206	4	
5	CLASSROOM 205 PB			.18			.18					CLASSROOM 206 PB	6	
7	CLASSROOM 205			.9			.36					WORK ROOM 217 ①	8	
9	BREAKOUT 214			.72			.36					WORK ROOM 217	10	
11	BREAKOUT 215			.72			.18					WORK ROOM 217	12	
13	CLASSROOM 203			.9			.7					WORK ROOM 217 REFRIG ①	14	
15	CLASSROOM 203			.9			.18					WORK ROOM 217 COFFEE ①	16	
17	CLASSROOM 203 PB			.18			.7					WORK ROOM 217 MICRO. ①	18	
19	OFFICE 208			1.08			.72					CLASSROOM 204	20	
21	COMMONS AREA 201			.72			.18					CLASSROOM 204 PB	22	
23	COMMONS AREA 201			.9			.72					CLASSROOM 204	24	
25	COMMONS AREA 201			.54			.72					BREAKOUT 212	26	
27	CORRIDOR 200 EWC ①			.7			.72					BREAKOUT 211	28	
29	DATA 221			.18			.72					CLASSROOM 202	30	
31	DATA 221			.18			.18					CLASSROOM 202 PB	32	
33	BREAKOUT 222			.72			.72					CLASSROOM 202	34	
35	DDC			1.0			.54					ELECTRICAL/MECHANICAL	36	
37	EXHAUST FANS #23/#24			.8			.9					COPIER 217 ①	38	
39	EXHAUST FANS #21/#22			.8								SPACE	40	
41	SPACE												42	
43													44	
45													46	
47													48	
49													50	
51													52	
53													54	
55													56	
57													58	
59													60	
61													62	
63	SURGE PROTECTION	30	3										64	
65													66	
TOTAL CONNECTED KVA		8.88	8.34	6.20	① GFI CIRCUIT BREAKER									
		A	B	C										



CALDWELL
ASSOCIATES | ARCHITECTS

116 N TARRAGONA STREET, PENSACOLA, FL 32502
(850) 432 9500 | CALDWELL-ASSOC.COM

License No: AR0007462 | License No: ID0003848

PROJECT ISSUES:
 SCHEMATIC DESIGN: 6/25/2023
 DESIGN DEVELOPMENT: 8/21/2023
 100%
 CONSTRUCTION 11/17/2023
 DOCUMENTS:
 REVISION 1 - 2/20/24 CIVIL ONLY
 REVISION 2 - 2/28/24 RFI REVISIONS
 REVISION 3 - 3/21/24 CP COMMENTS
 CONFORMANCE SET 4/16/2024

PROJECT TEAM:
 CIVIL
 KENNETH HORNE & ASSOCIATES
 LANDSCAPING
 FORME DESIGN GROUP
 STRUCTURAL
 MCCARTHY ENGINEERING
 ARCHITECTURAL
 CALDWELL ASSOCIATES
 FIRE PROTECTION
 H.M. YONGE & ASSOCIATES
 MECHANICAL/PLUMBING
 H.M. YONGE & ASSOCIATES
 ELECTRICAL
 KLOCKE ASSOCIATES

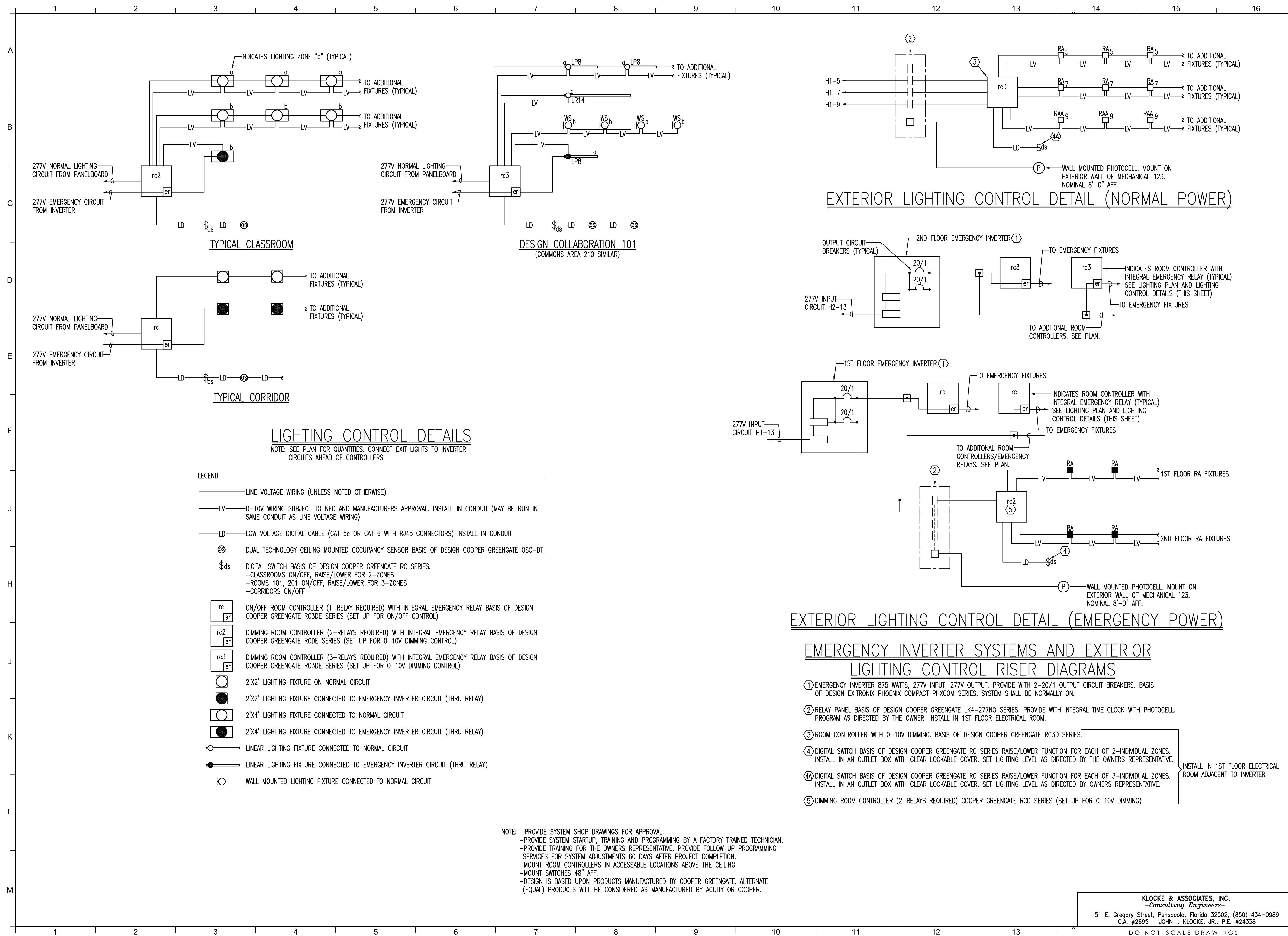
PROJECT:
CREATIVE LEARNING ACADEMY

**3151 HYDE PARK RD.
 PENSACOLA, FL**

PROJECT NO. : 22028
SHEET TITLE:
 PANELBOARD SCHEDULES

SHEET NUMBER:
E005

KLOCKE & ASSOCIATES, INC.
 -Consulting Engineers-
 51 E. Gregory Street, Pensacola, Florida 32502, (850) 434-0989
 C.A. #2695 JOHN I. KLOCKE, JR., P.E. #24338



PROJECT ISSUES:
 SCHEMATIC DESIGN: 6/25/2023
 DESIGN DEVELOPMENT: 8/21/2023
 100% CONSTRUCTION DOCUMENTS: 11/17/2023

REVISION 1 - 2/20/24 CIVIL ONLY
 REVISION 2 - 2/28/24 RFI REVISIONS
 REVISION 3 - 3/21/24 CP COMMENTS

CONFORMANCE SET 4/16/2024

PROJECT TEAM:

- CIVIL: KENNETH HORNE & ASSOCIATES
- LANDSCAPING: FORME DESIGN GROUP
- STRUCTURAL: MCCARTHY ENGINEERING
- ARCHITECTURAL: CALDWELL ASSOCIATES
- FIRE PROTECTION: H.M. YONGE & ASSOCIATES
- MECHANICAL/PLUMBING: H.M. YONGE & ASSOCIATES
- ELECTRICAL: KLOCKE ASSOCIATES

PROJECT:
CREATIVE LEARNING ACADEMY

**3151 HYDE PARK RD.
 PENSACOLA, FL**

PROJECT NO. : 22028
 SHEET TITLE:

LIGHTING CONTROL DETAILS

SHEET NUMBER:

E006

KLOCKE & ASSOCIATES, INC.
 Consulting Engineers
 51 E. Gregory Street, Pensacola, Florida 32502. (850) 434-0989
 C.A. #2695 JOHN I. KLOCKE, JR., P.E. #24338

PROJECT ISSUES:
SCHEMATIC DESIGN: 6/25/2023
DESIGN DEVELOPMENT: 8/21/2023
100%
CONSTRUCTION DOCUMENTS: 11/17/2023

REVISION 1 - 2/20/24 CIVIL ONLY
REVISION 2 - 2/28/24 RFI REVISIONS
REVISION 3 - 3/21/24 CP COMMENTS

CONFORMANCE SET 4/16/2024

PROJECT TEAM:

- CIVIL KENNETH HORNE & ASSOCIATES
- LANDSCAPING FORME DESIGN GROUP
- STRUCTURAL MCCARTHY ENGINEERING
- ARCHITECTURAL CALDWELL ASSOCIATES
- FIRE PROTECTION H.M. YONGE & ASSOCIATES
- MECHANICAL/PLUMBING H.M. YONGE & ASSOCIATES
- ELECTRICAL KLOCKE ASSOCIATES

PROJECT:
CREATIVE LEARNING ACADEMY

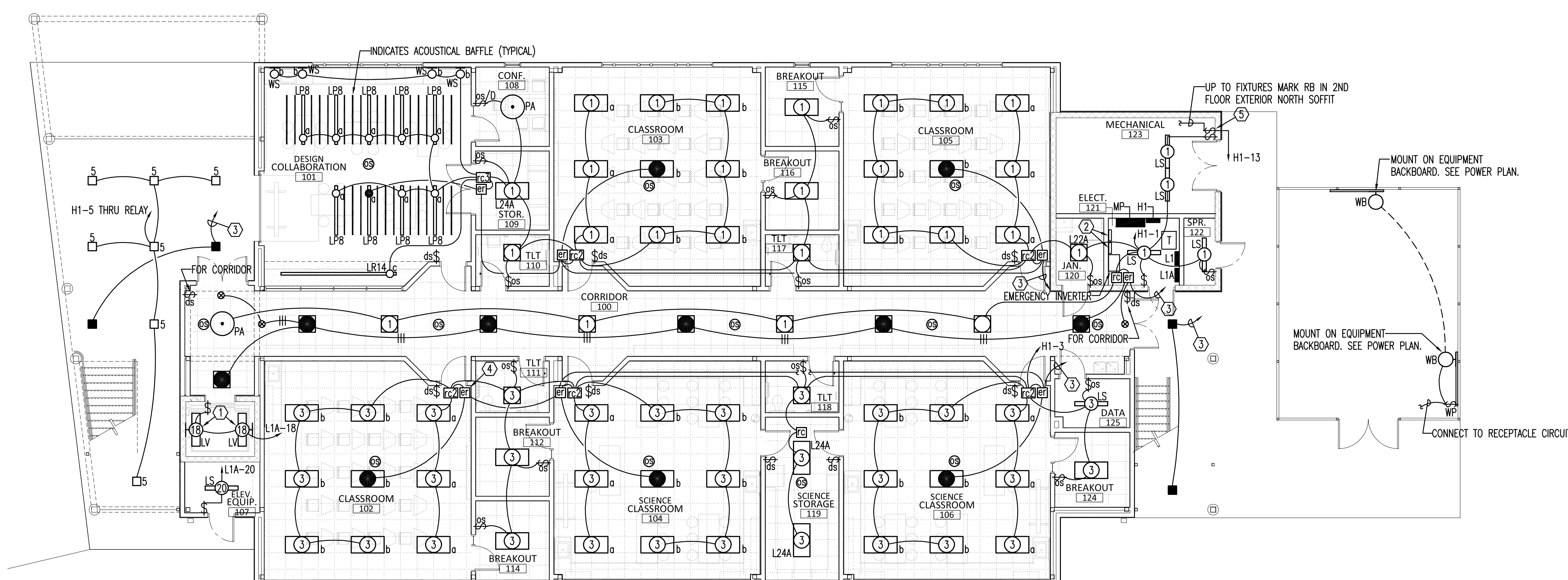
3151 HYDE PARK RD.
PENSACOLA, FL

PROJECT NO. : 22028
SHEET TITLE:

FIRST FLOOR
LIGHTING
PLAN

SHEET NUMBER:

E101



1ST FLOOR LIGHTING PLAN
SCALE: 1/8" = 1'-0"

- NOTES**
- ALL FIXTURES SHALL BE MARK L24 UNLESS NOTED OTHERWISE
 - ALL FIXTURES SHALL BE MARK L22 UNLESS NOTED OTHERWISE
 - ALL FIXTURES SHALL BE MARK RA UNLESS NOTED OTHERWISE

- KEY NOTES**
- ① MOUNTED IN ELEVATOR PIT.
 - ② RELAY PANELS. NOTE: MOUNT ROOM CONTROLLERS AND DIGITAL SWITCHES FOR EXTERIOR LIGHTING ON WALL ABOVE RELAY PANELS. SEE RISERS.
 - ③ TO EMERGENCY INVERTER. SEE RISER.
 - ④ INDICATES ROOM CONTROLLER WITH INTEGRAL EMERGENCY RELAY. MOUNT IN ACCESSIBLE LOCATION ON WALL ABOVE DOOR (TYPICAL)
 - ⑤ 277V (0-10V) DIMMER SWITCH. LEGRAND RH4FBL3PW WITH RHKITGRY GREY FACEPLATE.



KLOCKE & ASSOCIATES, INC.
-Consulting Engineers-
51 E. Gregory Street, Pensacola, Florida 32502, (850) 434-0989
C.A. #2695 JOHN I. KLOCKE, JR., P.E. #24338

DO NOT SCALE DRAWINGS

PROJECT ISSUES:
SCHEMATIC DESIGN: 6/25/2023
DESIGN DEVELOPMENT: 8/21/2023
100%
CONSTRUCTION DOCUMENTS: 11/17/2023

REVISION 1 - 2/20/24 CIVIL ONLY
REVISION 2 - 2/28/24 RFI REVISIONS
REVISION 3 - 3/21/24 CP COMMENTS

CONFORMANCE SET 4/16/2024

PROJECT TEAM:

CIVIL
KENNETH HORNE & ASSOCIATES
LANDSCAPING
FORME DESIGN GROUP
STRUCTURAL
MCCARTHY ENGINEERING
ARCHITECTURAL
CALDWELL ASSOCIATES
FIRE PROTECTION
H.M. YONGE & ASSOCIATES
MECHANICAL/PLUMBING
H.M. YONGE & ASSOCIATES
ELECTRICAL
KLOCKE ASSOCIATES

PROJECT:
CREATIVE LEARNING ACADEMY

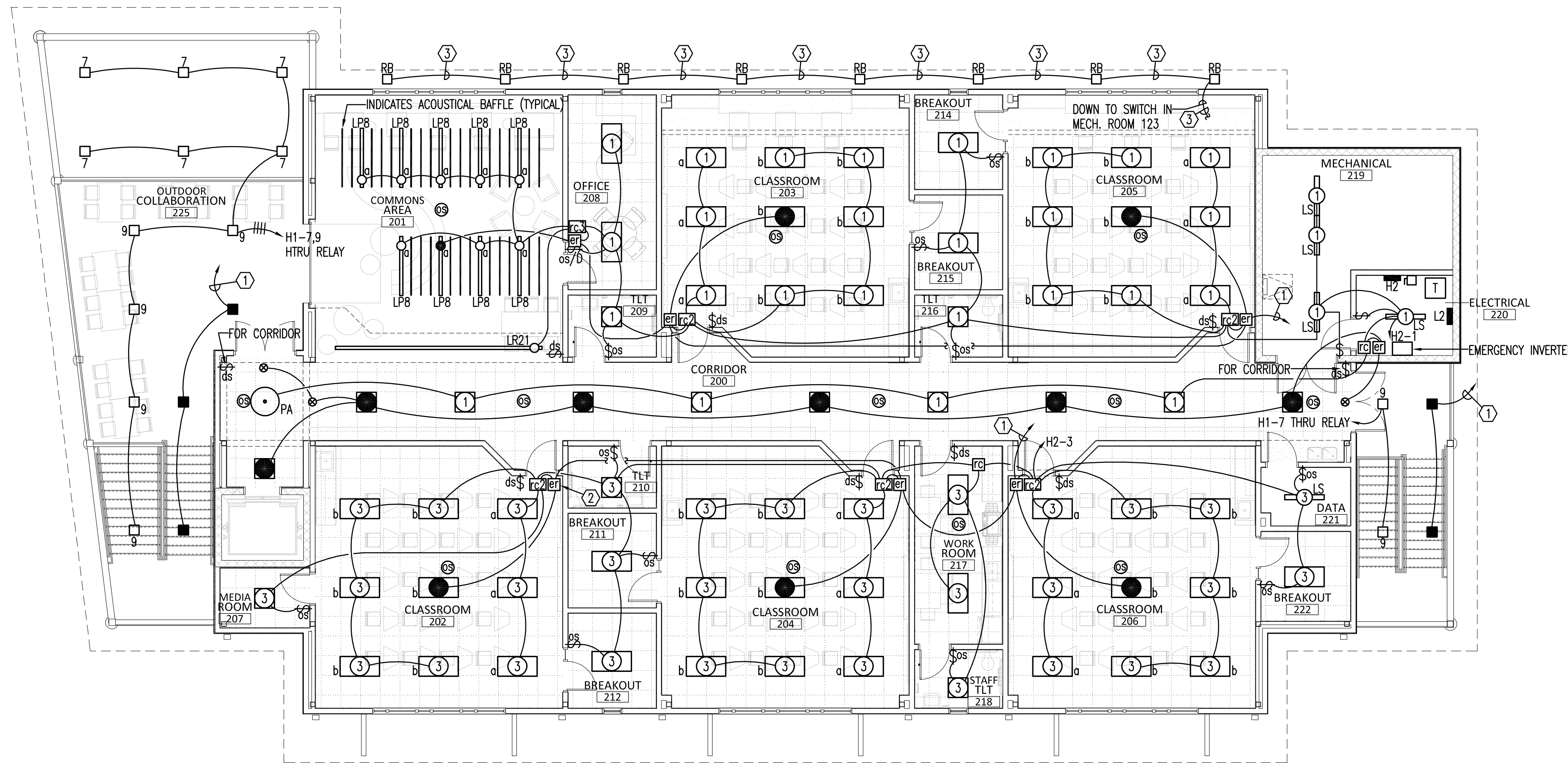
3151 HYDE PARK RD.
PENSACOLA, FL

PROJECT NO. : 22028
SHEET TITLE:

SECOND FLOOR
LIGHTING
PLAN

SHEET NUMBER:

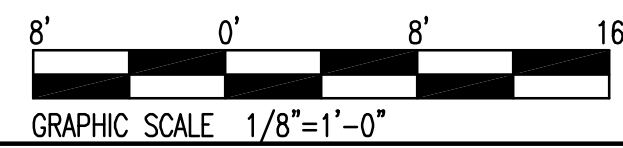
E102



2ND FLOOR LIGHTING PLAN
SCALE: 1/8" = 1'-0"

- NOTES**
- ALL FIXTURES SHALL BE MARK L24 UNLESS NOTED OTHERWISE
 - ALL FIXTURES SHALL BE MARK L22 UNLESS NOTED OTHERWISE
 - ALL FIXTURES SHALL BE MARK RA UNLESS NOTED OTHERWISE

- KEY NOTES**
- ① TO EMERGENCY INVERTER. SEE RISER DIAGRAM.
 - ② INDICATES ROOM CONTROLLER WITH INTEGRAL EMERGENCY RELAY. MOUNT IN ACCESSIBLE LOCATION ON WALL ABOVE DOOR (TYPICAL)
 - ③ PROVIDE LINE VOLTAGE (277V) AND LOW VOLTAGE (0-10V) WIRING IN CONDUIT TO EACH FIXTURE.



KLOCKE & ASSOCIATES, INC.
-Consulting Engineers-
51 E. Gregory Street, Pensacola, Florida 32502, (850) 434-0989
C.A. #2695 JOHN I. KLOCKE, JR., P.E. #24338

DO NOT SCALE DRAWINGS

1 2 3 4 5 6 7 8 9 10 11 12 13 14 15 16

A
B
C
D
E
F
J
H
J
K
L
M

© 2023 CALDWELL ASSOCIATES ARCHITECTS, INC

PROJECT ISSUES:
SCHEMATIC DESIGN: 6/25/2023
DESIGN DEVELOPMENT: 8/21/2023
100%
CONSTRUCTION DOCUMENTS: 11/17/2023

REVISION 1 - 2/20/24 CIVIL ONLY
REVISION 2 - 2/28/24 RFI REVISIONS
REVISION 3 - 3/21/24 CP COMMENTS
CONFORMANCE SET 4/16/2024

PROJECT TEAM:

CIVIL
KENNETH HORNE & ASSOCIATES
LANDSCAPING
FORME DESIGN GROUP
STRUCTURAL
MCCARTHY ENGINEERING
ARCHITECTURAL
CALDWELL ASSOCIATES
FIRE PROTECTION
H.M. YONGE & ASSOCIATES
MECHANICAL/PLUMBING
H.M. YONGE & ASSOCIATES
ELECTRICAL
KLOCKE ASSOCIATES

PROJECT:
CREATIVE LEARNING ACADEMY

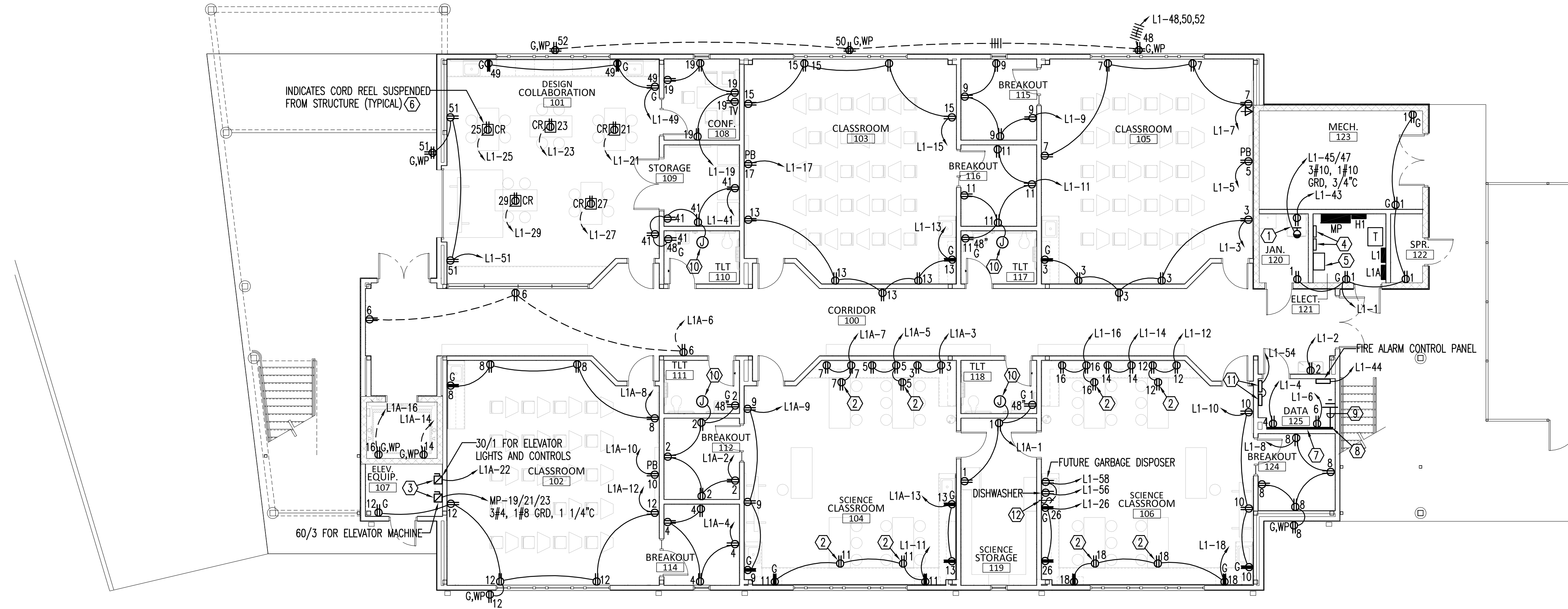
3151 HYDE PARK RD.
PENSACOLA, FL

PROJECT NO. : 22028
SHEET TITLE:

FIRST FLOOR
POWER & SIGNAL
PLAN

SHEET NUMBER:

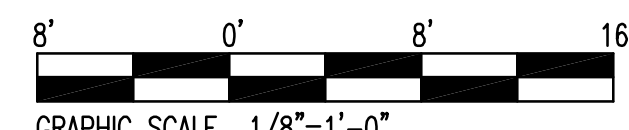
E103



1ST FLOOR POWER & SIGNAL PLAN
SCALE: 1/8" = 1'-0"

KEY NOTES

- ① STACKED WASHER AND DRYER. VERIFY ROUGH-IN REQUIREMENTS.
- ② MOUNT IN FACE OF CABINET.
- ③ COORDINATE LOCATIONS WITH ELEVATOR SUPPLIER.
- ④ RELAY PANELS
- ⑤ EMERGENCY INVERTER
- ⑥ FIELD COORDINATE LOCATIONS IN COORDINATION WITH PENDANT MOUNTED LIGHTING FIXTURES AND ACOUSTICAL BAFFLES.
- ⑦ 8' X 8' X 3/4" PLYWOOD BACKBOARD. PAINT WITH FIRE RETARDANT PAINT.
- ⑧ PROVIDE GROUND BAR HARGAR GB SERIES 4" X 14". PROVIDE WITH STANDOFF BRACKETS.
- ⑨ #4 GRD IN 3/4" TO SERVICE GROUND. ROUTE #4 GRD IN 3/4" UP TO DATA ROOD GRD BAR ON SECOND FLOOR.
- ⑩ PROVIDE 120V CONNECTION FOR AUTOMATIC FLUSH VALVE POWER SUPPLY. COORDINATE ROUGH-IN WITH PLUMBING CONTRACTOR.
- ⑪ PROVIDE 120V CONNECTIONS FOR ACCESS CONTROL AND CCTV HEADEND EQUIPMENT. COORDINATE LOCATIONS WITH OWNERS SECURITY SUBCONTRACTOR.
- ⑫ PROVIDE WIRING COMPLETE TO OUTLET BOX FOR FUTURE GARBAGE DISPOSAL SWITCH (PROVIDE BLANK PLATE)



KLOCKE & ASSOCIATES, INC.
-Consulting Engineers-
51 E. Gregory Street, Pensacola, Florida 32502, (850) 434-0989
C.A. #2695 JOHN I. KLOCKE, JR., P.E. #24338

DO NOT SCALE DRAWINGS

PROJECT ISSUES:
SCHEMATIC DESIGN: 6/25/2023
DESIGN DEVELOPMENT: 8/21/2023
100%
CONSTRUCTION DOCUMENTS: 11/17/2023

REVISION 1 - 2/20/24 CIVIL ONLY
REVISION 2 - 2/28/24 RFI REVISIONS
REVISION 3 - 3/21/24 CP COMMENTS

CONFORMANCE SET 4/16/2024

PROJECT TEAM:
CIVIL: KENNETH HORNE & ASSOCIATES
LANDSCAPING: FORME DESIGN GROUP
STRUCTURAL: MCCARTHY ENGINEERING
ARCHITECTURAL: CALDWELL ASSOCIATES
FIRE PROTECTION: H.M. YONGE & ASSOCIATES
MECHANICAL/PLUMBING: H.M. YONGE & ASSOCIATES
ELECTRICAL: KLOCKE ASSOCIATES

PROJECT:
CREATIVE LEARNING ACADEMY

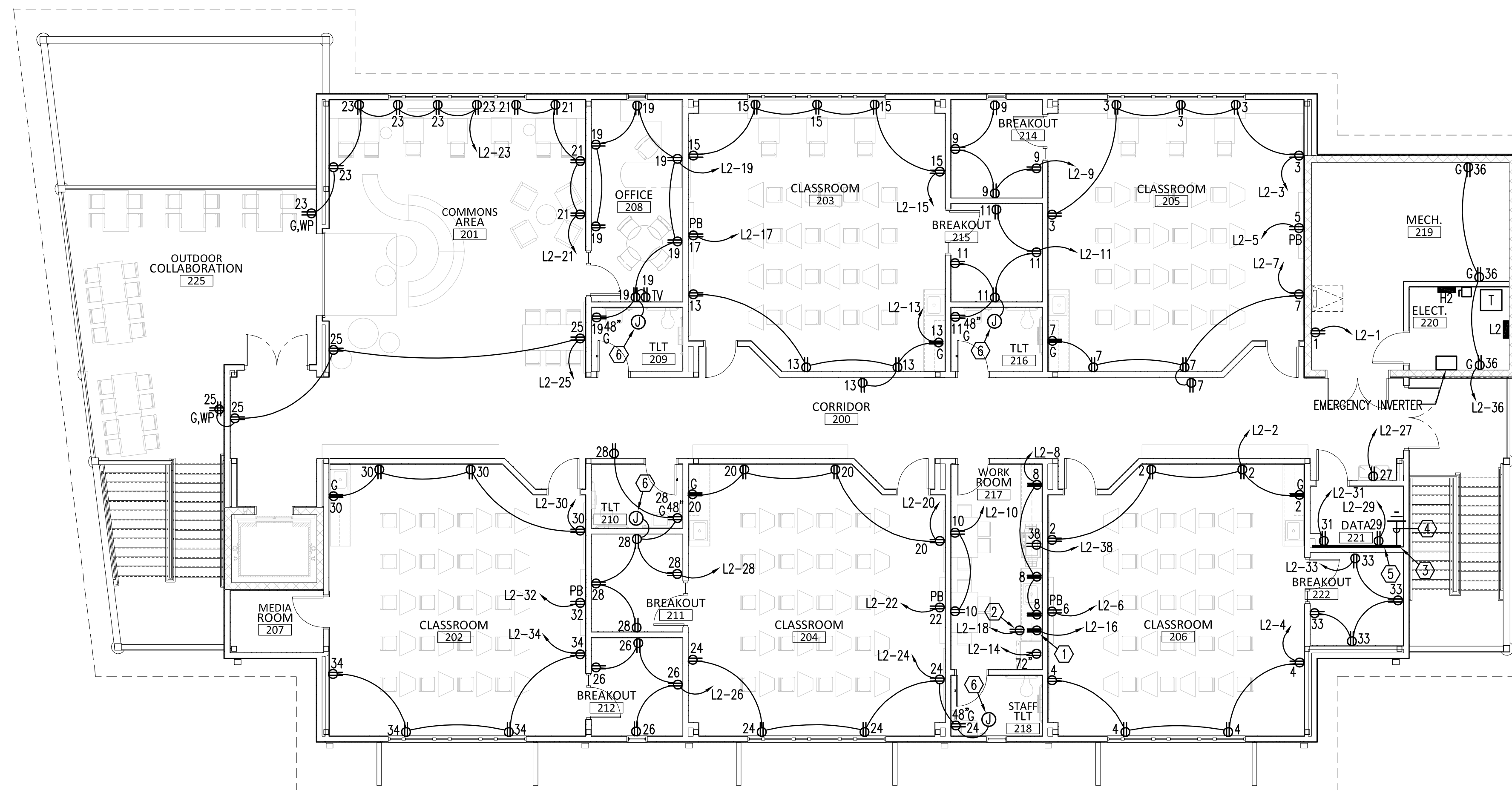
**3151 HYDE PARK RD.
PENSACOLA, FL**

PROJECT NO. : 22028
SHEET TITLE:

SECOND FLOOR
POWER & SIGNAL
PLAN

SHEET NUMBER:

E104



2ND FLOOR POWER & SIGNAL PLAN
SCALE: 1/8" = 1'-0"

KEY NOTES

- ① FOR COFFEE MAKER.
- ② FOR MICROWAVE ABOVE.
- ③ PROVIDE GROUND BAR HARGAR GB SERIES 4" X 14". PROVIDE WITH STANDOFF BRACKETS.
- ④ #4 GRD IN 3/4" DOWN TO GRD BAR IN FIRST FLOOR DATA ROOM.
- ⑤ 8' X 8' X 3/4" PLYWOOD BACKBOARD. PAINT WITH FIRE RETARDANT PAINT.
- ⑥ PROVIDE 120V CONNECTION FOR AUTOMATIC FLUSH VALVE POWER SUPPLY. COORDINATE ROUGH-IN WITH PLUMBING CONTRACTOR.



GRAPHIC SCALE 1/8"=1'-0"
KLOCKE & ASSOCIATES, INC.
-Consulting Engineers-

51 E. Gregory Street, Pensacola, Florida 32502, (850) 434-0989
C.A. #2695 JOHN I. KLOCKE, JR., P.E. #24338

DO NOT SCALE DRAWINGS

1 2 3 4 5 6 7 8 9 10 11 12 13 14 15 16

A
B
C
D
E
F
J
H
J
K
L
M

PROJECT ISSUES:
SCHEMATIC DESIGN: 6/25/2023
DESIGN DEVELOPMENT: 8/21/2023
100% CONSTRUCTION 11/17/2023
DOCUMENTS:

REVISION 1 - 2/20/24 CIVIL ONLY
REVISION 2 - 2/28/24 RFI REVISIONS
REVISION 3 - 3/21/24 CP COMMENTS
CONFORMANCE SET 4/16/2024

PROJECT TEAM:

CIVIL KENNETH HORNE & ASSOCIATES
LANDSCAPING FORME DESIGN GROUP
STRUCTURAL MCCARTHY ENGINEERING
ARCHITECTURAL CALDWELL ASSOCIATES
FIRE PROTECTION H.M. YONGE & ASSOCIATES
MECHANICAL/PLUMBING H.M. YONGE & ASSOCIATES
ELECTRICAL KLOCKE ASSOCIATES

PROJECT:

CREATIVE LEARNING ACADEMY

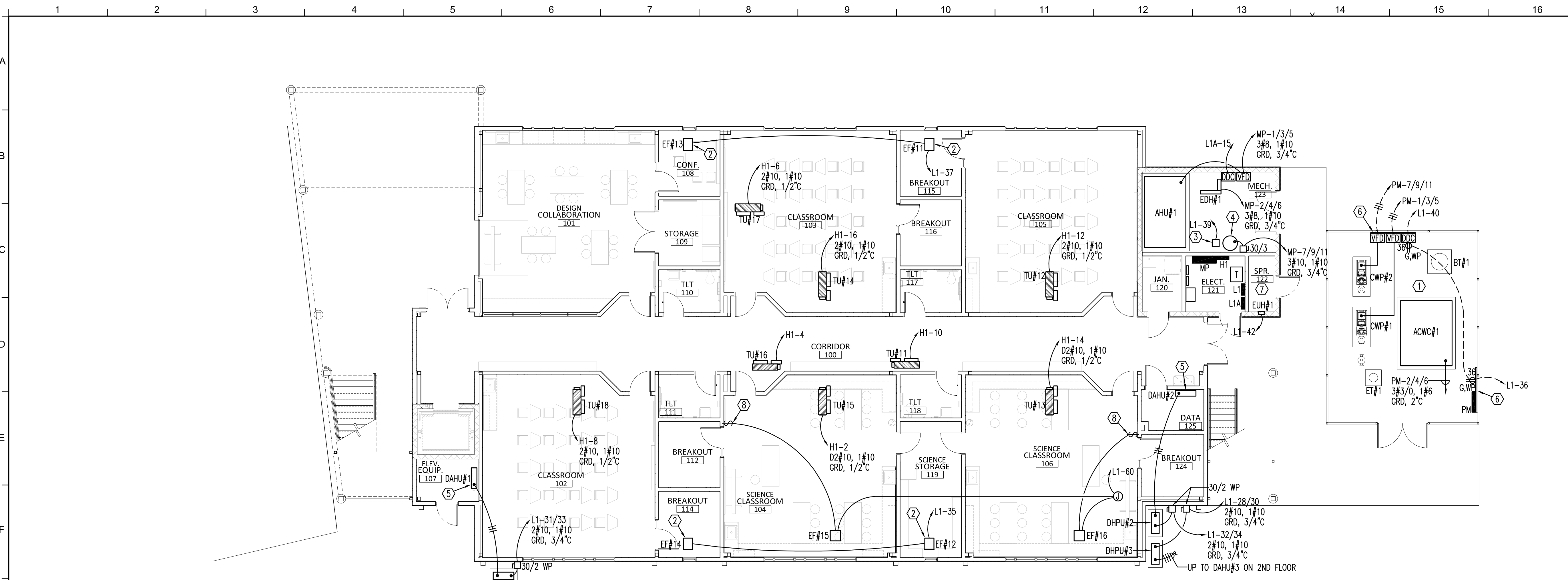
**3151 HYDE PARK RD.
PENSACOLA, FL**

PROJECT NO. : 22028
SHEET TITLE:

FIRST FLOOR
MECAHNICAL POWER PLAN

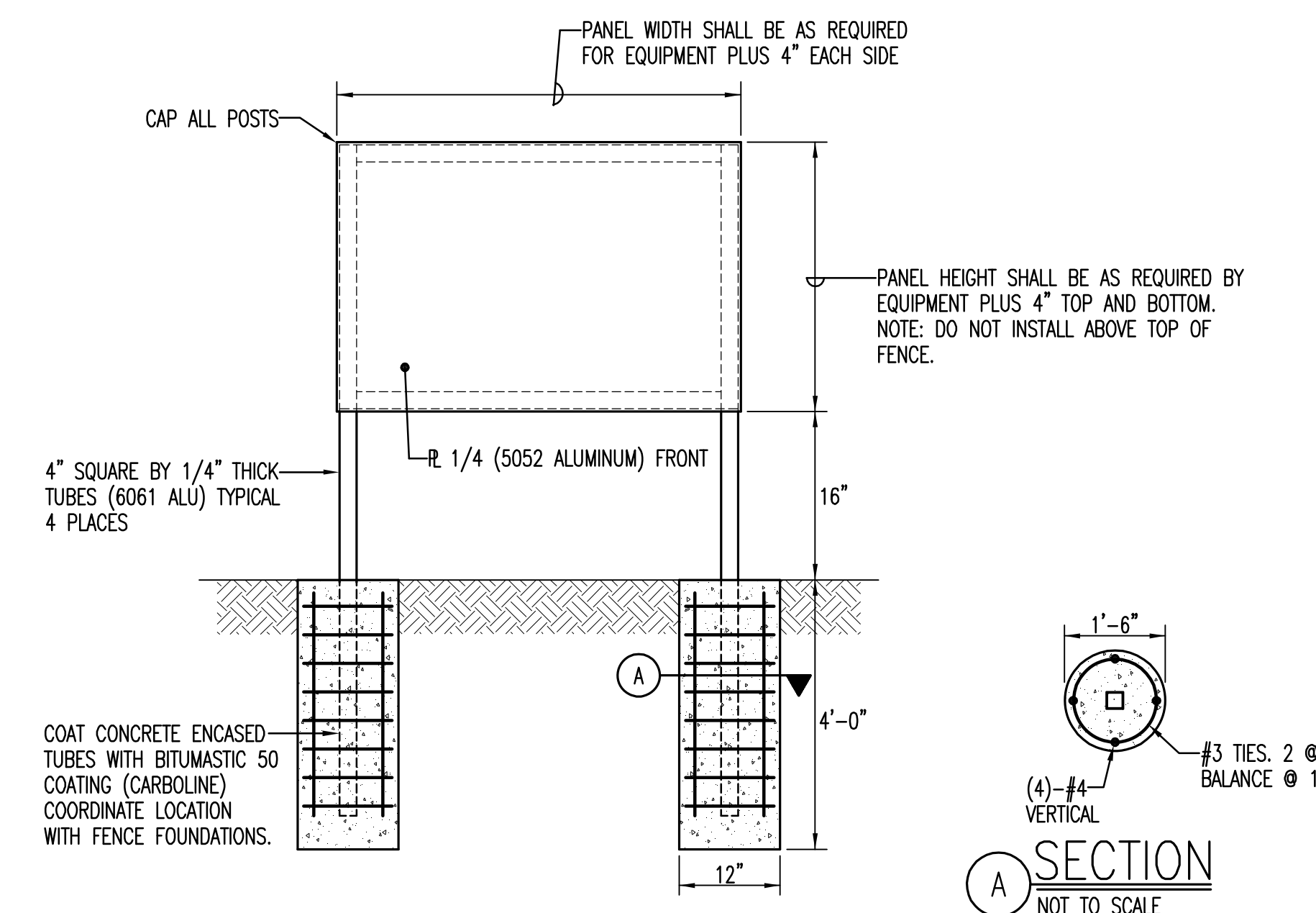
SHEET NUMBER:

E105



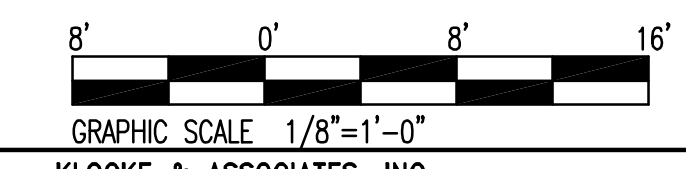
1ST FLOOR MECAHNICAL POWER PLAN
SCALE: 1/8" = 1'-0"

- KEY NOTES**
- 1 PROVIDE CONNECTION FOR PIPING HEAT TRACE. COORDINATE WITH MECHANICAL CONTRACTOR. CIRCUIT L1-38, 2#12, 1#12 GRD, 3/4°C.
 - 2 INTERLOCK EXHAUST FANS WITH AHU#1. COORDINATE WITH MECHANICAL CONTRACTOR.
 - 3 HOT WATER CIRC. PUMP
 - 4 HOT WATER HEATER
 - 5 PROVIDE TOGGLE SWITCH DISCONNECT SWITCH.
 - 6 PROVIDE EQUIPMENT BACKBOARD. SEE DETAIL THIS SHEET.
 - 7 PROVIDE CIRCUIT FOR DRY SPRINKLER AIR COMPRESSOR. L1-46. 2#12, 1#12 GRD, 11/2°C.
 - 8 MARK TIME SWITCH FOR EXHAUST FAN CONTROL. SEE MECHANICAL.



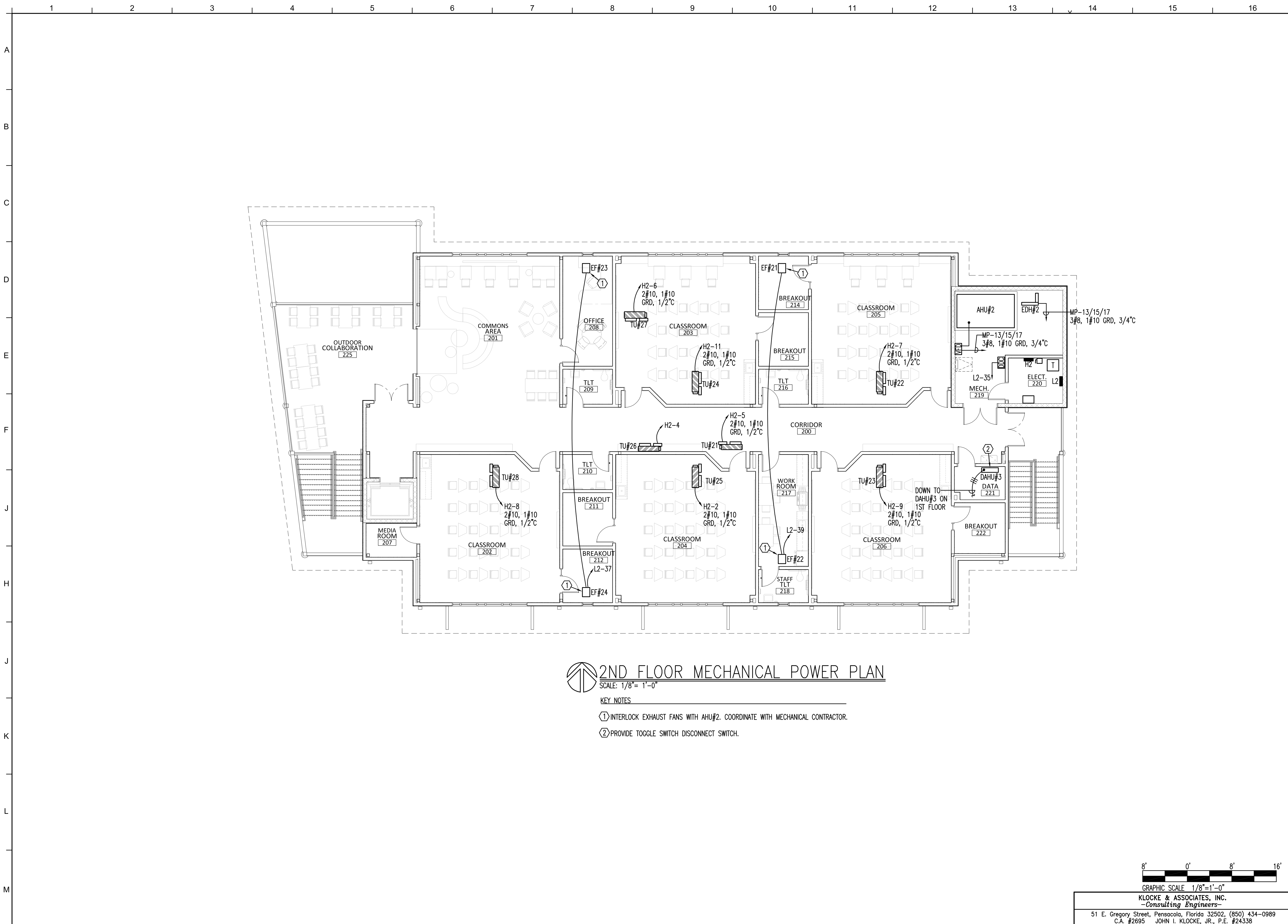
BACKBOARD ASSEMBLY DETAIL

- GENERAL NOTES**
- 1. DESIGN IS IN ACCORDANCE WITH THE APPLICABLE REQUIREMENTS OF THE FLORIDA BUILDINGS CODE.
 - 2. ALL CONCRETE SHALL HAVE A MINIMUM 28-DAY COMPRESSIVE STRENGTH OF 3000 PSI.
 - 3. ALL CONCRETE REINFORCING SHALL BE ASTM A615, GRADE 60 AND SHALL HAVE 3" COVER.
 - 4. ALUMINUM TUBES SHALL BE 6061-T6 WITH A MINIMUM YIELD STRENGTH OF 35 KSI.
 - 5. ALUMINUM PLATES SHALL BE 5052 WITH A MINIMUM YIELD STRENGTH OF 20 KSI.
 - 6. ALL WELDS SHALL BE IN ACCORDANCE WITH STRUCTURAL WELDING CODE-ALUMINUM (AWS D1.2)
 - 7. ALL FASTENERS SHALL BE STAINLESS STEEL OR ALUMINUM.



KLOCKE & ASSOCIATES, INC.
-Consulting Engineers-
51 E. Gregory Street, Pensacola, Florida 32502, (850) 434-0989
C.A. #2695 JOHN I. KLOCKE, JR., P.E. #24338

DO NOT SCALE DRAWINGS



2ND FLOOR MECHANICAL POWER PLAN
 SCALE: 1/8" = 1'-0"

- KEY NOTES**
- ① INTERLOCK EXHAUST FANS WITH AHU#2. COORDINATE WITH MECHANICAL CONTRACTOR.
 - ② PROVIDE TOGGLE SWITCH DISCONNECT SWITCH.



KLOCKE & ASSOCIATES, INC.
 -Consulting Engineers-
 51 E. Gregory Street, Pensacola, Florida 32502, (850) 434-0989
 C.A. #2695 JOHN I. KLOCKE, JR., P.E. #24338

PROJECT ISSUES:
 SCHEMATIC DESIGN: 6/25/2023
 DESIGN DEVELOPMENT: 8/21/2023
 100%
 CONSTRUCTION 11/17/2023
 DOCUMENTS:
 REVISION 1 - 2/20/24 CIVIL ONLY
 REVISION 2 - 2/28/24 RFI REVISIONS
 REVISION 3 - 3/21/24 CP COMMENTS
 CONFORMANCE SET 4/16/2024

PROJECT TEAM:
 CIVIL: KENNETH HORNE & ASSOCIATES
 LANDSCAPING: FORME DESIGN GROUP
 STRUCTURAL: MCCARTHY ENGINEERING
 ARCHITECTURAL: CALDWELL ASSOCIATES
 FIRE PROTECTION: H.M. YONGE & ASSOCIATES
 MECHANICAL/PLUMBING: H.M. YONGE & ASSOCIATES
 ELECTRICAL: KLOCKE ASSOCIATES

PROJECT:
CREATIVE LEARNING ACADEMY

3151 HYDE PARK RD.
PENSACOLA, FL

PROJECT NO. : 22028
 SHEET TITLE:
 SECOND FLOOR
 MECHANICAL POWER PLAN

SHEET NUMBER:
E106

PROJECT ISSUES:
SCHEMATIC DESIGN: 6/25/2023
DESIGN DEVELOPMENT: 8/21/2023
100% CONSTRUCTION DOCUMENTS: 11/17/2023

REVISION 1 - 2/20/24 CIVIL ONLY
REVISION 2 - 2/28/24 RFI REVISIONS
REVISION 3 - 3/21/24 CP COMMENTS

CONFORMANCE SET 4/16/2024

PROJECT TEAM:

- CIVIL
KENNETH HORNE & ASSOCIATES
- LANDSCAPING
FORME DESIGN GROUP
- STRUCTURAL
MCCARTHY ENGINEERING
- ARCHITECTURAL
CALDWELL ASSOCIATES
- FIRE PROTECTION
H.M. YONGE & ASSOCIATES
- MECHANICAL/PLUMBING
H.M. YONGE & ASSOCIATES
- ELECTRICAL
KLOCKE ASSOCIATES

PROJECT:
CREATIVE LEARNING ACADEMY

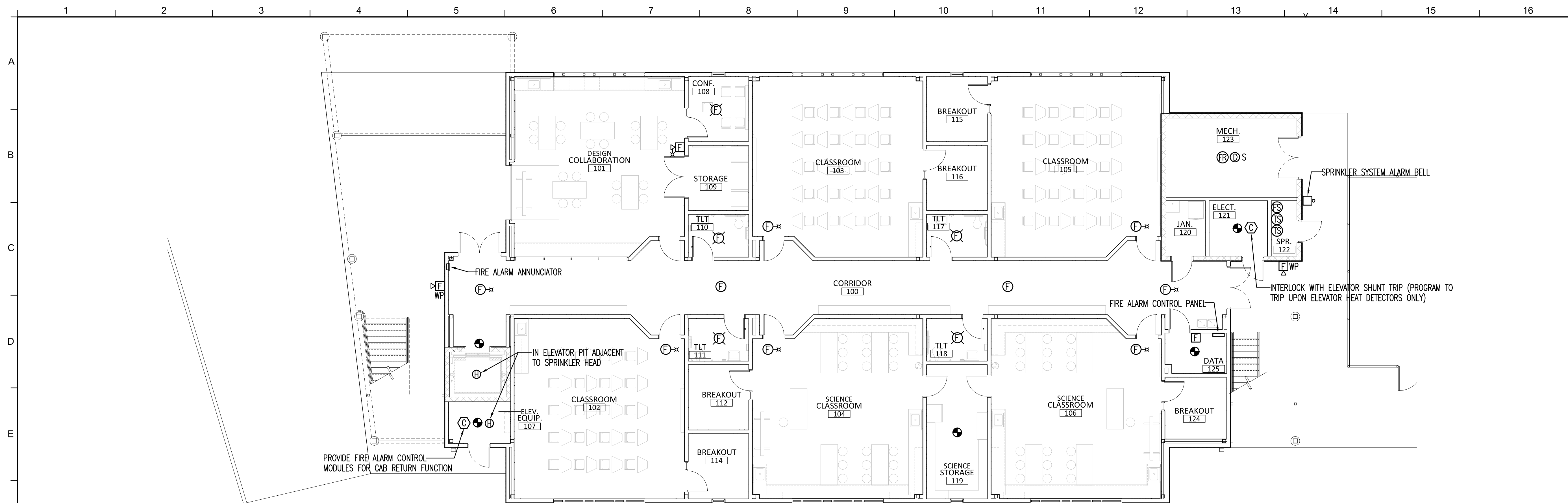
**3151 HYDE PARK RD.
PENSACOLA, FL**

PROJECT NO. : 22028
SHEET TITLE:

FIRST FLOOR
FIRE ALARM SYSTEM
PLAN

SHEET NUMBER:

E107



1ST FLOOR FIRE ALARM SYSTEM PLAN

SCALE: 1/8" = 1'-0"

NOTE: SEE SITE PLAN FOR TAMPER SWITCHES AT BACK FLOW PREVENTOR. PROVIDE SURGE PROTECTION AT EACH END OF THE CIRCUITS.

	ANNUNCIATION						NOTIFICATION						FIRE SAFETY CONTROL				
	ACTIVATE COMMON ALARM SIGNAL INDICATOR	ACTIVATE AUDIBLE ALARM SIGNAL (INCLUDING EXTERIOR ALARM BELL)	ACTIVATE COMMON SUPERVISORY SIGNAL INDICATOR	ACTIVATE AUDIBLE SUPERVISORY SIGNAL	ACTIVATE COMMON TROUBLE SIGNAL INDICATOR	ACTIVATE AUDIBLE TROUBLE SIGNAL	ACTIVATE APPROPRIATE DEVICE LOCATION INDICATOR	ACTIVATE ALL AUDIBLE EVACUATION SIGNALS	ACTIVATE ALL VISIBLE EVACUATION SIGNALS	DISPLAY CHANGE OF STATUS	TRANSMIT ALARM SIGNAL TO SUPERVISING STATION	TRANSMIT SUPERVISORY SIGNAL TO SUPERVISING STATION	TRANSMIT TROUBLE SIGNAL TO SUPERVISING STATION	ACTIVATE OUTDOOR SPRINKLER BELL	SHUTDOWN AHU FANS	REMOTELY DISPLAY ACTIVE STATUS	ACTIVATE ELEVATOR POWER SHUNT TRIP
AREA SMOKE DETECTOR	●	●				●	●	●	●	●				●	●		
SMOKE DETECTOR AT FACP	●	●				●	●	●	●	●				●	●		
ELEV. LOBBIES & MECH. RM. SMOKE DETECTORS	●	●				●	●	●	●	●				●	●		●
ELEVATOR SYSTEM HEAT DETATORS	●	●				●	●	●	●	●						●	
MANUAL PULL STATION	●	●				●	●	●	●	●				●	●		
DUCT DETECTOR AT HVAC FAN SUPERVISORY			●	●		●			●	●		●		●	●		
WET SPRINKLER WATERFLOW SWITCH	●	●				●	●	●	●	●			●	●	●		
SPRINKLER VALVE SUPERVISORY SWITCH			●	●		●			●	●				●	●		
BACK FLOW PREVENTER SWITCH			●	●		●			●	●				●	●		
FIRE ALARM AC POWER FAILURE				●	●				●	●		●		●	●		
FIRE ALARM SYSTEM LOW BATTERY				●	●				●	●		●		●	●		
OPEN CIRCUIT				●	●				●	●		●		●	●		
GROUND FAULT				●	●				●	●		●		●	●		
NOTIFICATION CIRCUIT (NAC) SHORT				●	●				●	●		●		●	●		
LOSS OF COMMUNICATION PATH				●	●				●	●		●		●	●		

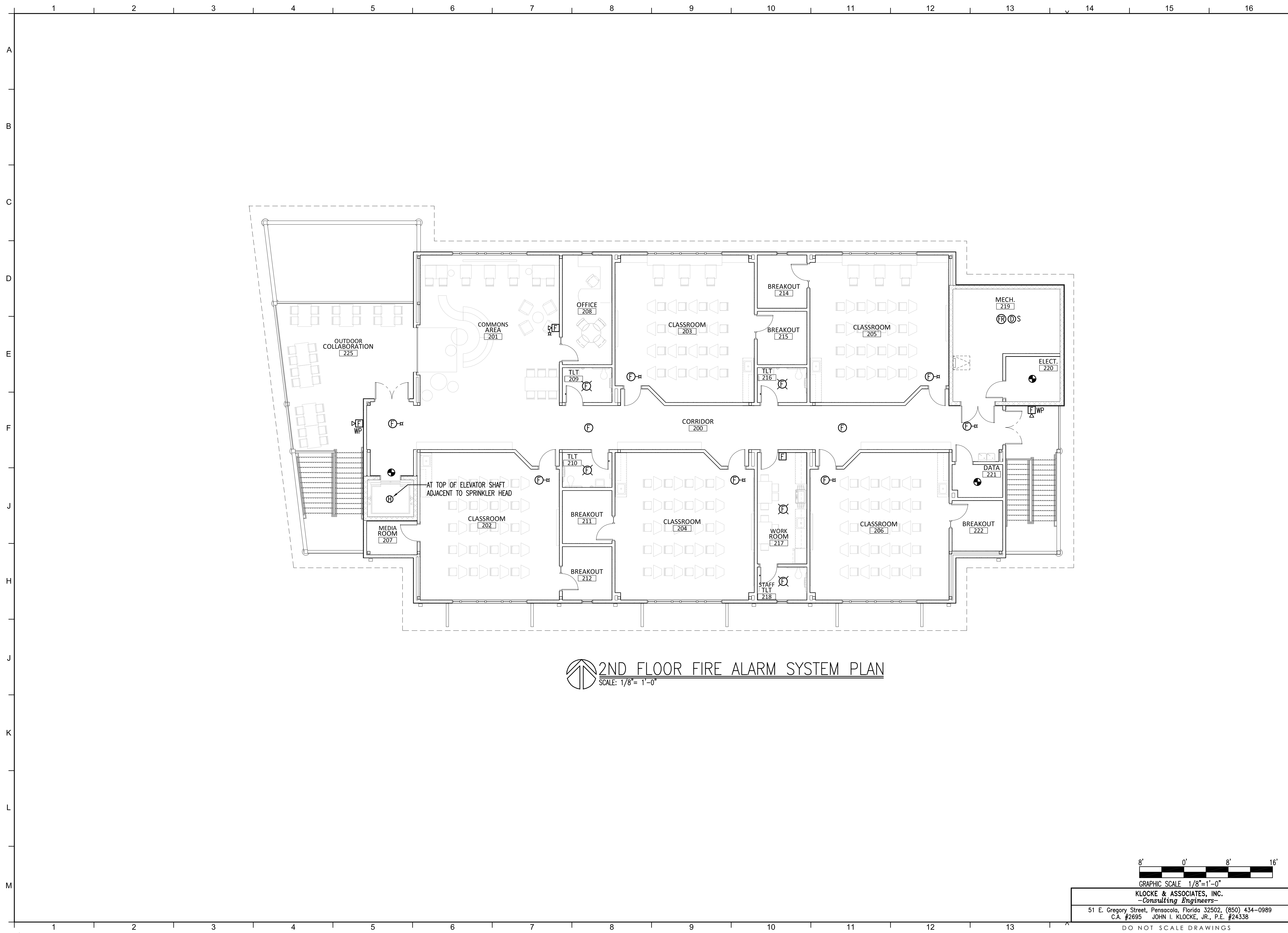


GRAPHIC SCALE 1/8" = 1'-0"

KLOCKE & ASSOCIATES, INC.
-Consulting Engineers-

51 E. Gregory Street, Pensacola, Florida 32502, (850) 434-0989
C.A. #2695 JOHN I. KLOCKE, JR., P.E. #24338

DO NOT SCALE DRAWINGS



PROJECT ISSUES:
SCHEMATIC DESIGN: 6/25/2023
DESIGN DEVELOPMENT: 8/21/2023

100%
CONSTRUCTION 11/17/2023
DOCUMENTS:

REVISION 1 - 2/20/24 CIVIL ONLY
REVISION 2 - 2/28/24 RFI REVISIONS
REVISION 3 - 3/21/24 CP COMMENTS

CONFORMANCE SET 4/16/2024

PROJECT TEAM:

- CIVIL KENNETH HORNE & ASSOCIATES
- LANDSCAPING FORME DESIGN GROUP
- STRUCTURAL MCCARTHY ENGINEERING
- ARCHITECTURAL CALDWELL ASSOCIATES
- FIRE PROTECTION H.M. YONGE & ASSOCIATES
- MECHANICAL/PLUMBING H.M. YONGE & ASSOCIATES
- ELECTRICAL KLOCKE ASSOCIATES

PROJECT:
CREATIVE LEARNING ACADEMY

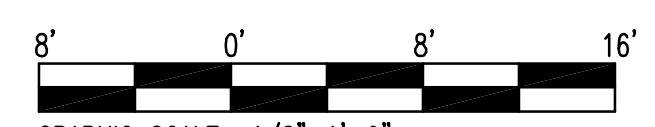
3151 HYDE PARK RD.
PENSACOLA, FL

PROJECT NO. : 22028
SHEET TITLE:

SECOND FLOOR
FIRE ALARM SYSTEM
PLAN

SHEET NUMBER:

E108



GRAPHIC SCALE 1/8"=1'-0"
KLOCKE & ASSOCIATES, INC.
-Consulting Engineers-
51 E. Gregory Street, Pensacola, Florida 32502, (850) 434-0989
C.A. #2695 JOHN I. KLOCKE, JR., P.E. #24338

DO NOT SCALE DRAWINGS

PROJECT ISSUES:
SCHEMATIC DESIGN: 6/25/2023
DESIGN DEVELOPMENT: 8/21/2023
100%
CONSTRUCTION DOCUMENTS: 11/17/2023

REVISION 1 - 2/20/24 CIVIL ONLY
REVISION 2 - 2/28/24 RFI REVISIONS
REVISION 3 - 3/21/24 CP COMMENTS

CONFORMANCE SET 4/16/2024

PROJECT TEAM:

CIVIL
KENNETH HORNE & ASSOCIATES
LANDSCAPING
FORME DESIGN GROUP
STRUCTURAL
MCCARTHY ENGINEERING
ARCHITECTURAL
CALDWELL ASSOCIATES
FIRE PROTECTION
H.M. YONGE & ASSOCIATES
MECHANICAL/PLUMBING
H.M. YONGE & ASSOCIATES
ELECTRICAL
KLOCKE ASSOCIATES

PROJECT:
CREATIVE LEARNING ACADEMY

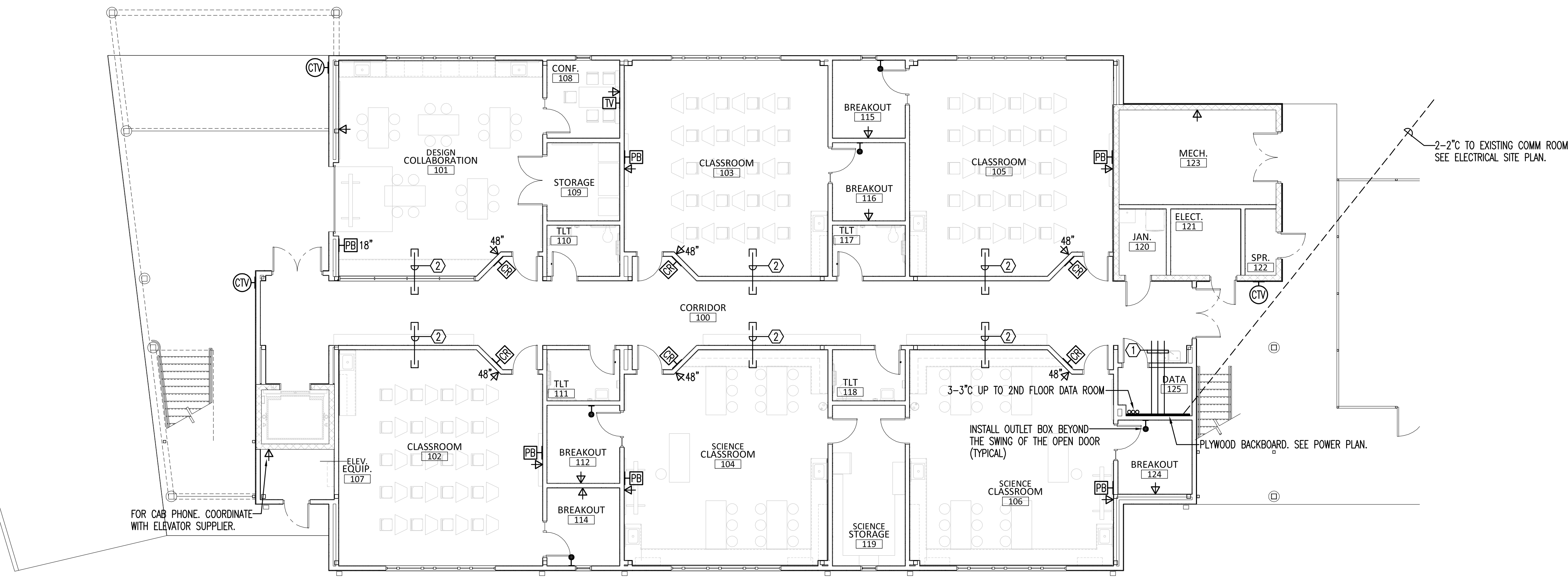
3151 HYDE PARK RD.
PENSACOLA, FL

PROJECT NO. : 22028
SHEET TITLE:

FIRST FLOOR
COMMUNICATIONS SYSTEM
PLAN

SHEET NUMBER:

E109



1ST FLOOR COMMUNICATIONS SYSTEM PLAN

SCALE: 1/8" = 1'-0"

KEY NOTES

- ① STUB 3-3" TO ABOVE THE CORRIDOR CEILING. TURN DOWN TO TOP OF BACKBOARD.
- ② INDICATES 2" CONDUIT SLEEVE ABOVE CEILING. INSTALL ENDS IN ACCESSABLE LOCATIONS.

GENERAL NOTE

COORDINATE LOCATION OF ALL **PB** OUTLETS WITH THE ARCHITECT AND EQUIPMENT SUPPLIER SUCH THAT OUTLETS ARE CONCEALED AND ABLE TO BE ACCESSED.



KLOCKE & ASSOCIATES, INC.
-Consulting Engineers-
51 E. Gregory Street, Pensacola, Florida 32502, (850) 434-0989
C.A. #2695 JOHN I. KLOCKE, JR., P.E. #24338

1 2 3 4 5 6 7 8 9 10 11 12 13 14 15 16

A
B
C
D
E
F
J
H
K
L
M

© 2023 CALDWELL ASSOCIATES ARCHITECTS, INC

PROJECT ISSUES:

SCHEMATIC DESIGN: 6/25/2023

DESIGN DEVELOPMENT: 8/21/2023

100% CONSTRUCTION 11/17/2023

DOCUMENTS:

REVISION 1 - 2/20/24 CIVIL ONLY

REVISION 2 - 2/28/24 RFI REVISIONS

REVISION 3 - 3/21/24 CP COMMENTS

CONFORMANCE SET 4/16/2024

PROJECT TEAM:

CIVIL KENNETH HORNE & ASSOCIATES

LANDSCAPING FORME DESIGN GROUP

STRUCTURAL MCCARTHY ENGINEERING

ARCHITECTURAL CALDWELL ASSOCIATES

FIRE PROTECTION H.M. YONGE & ASSOCIATES

MECHANICAL/PLUMBING H.M. YONGE & ASSOCIATES

ELECTRICAL KLOCKE ASSOCIATES

PROJECT:

CREATIVE LEARNING

ACADEMY

3151 HYDE PARK RD.

PENSACOLA, FL

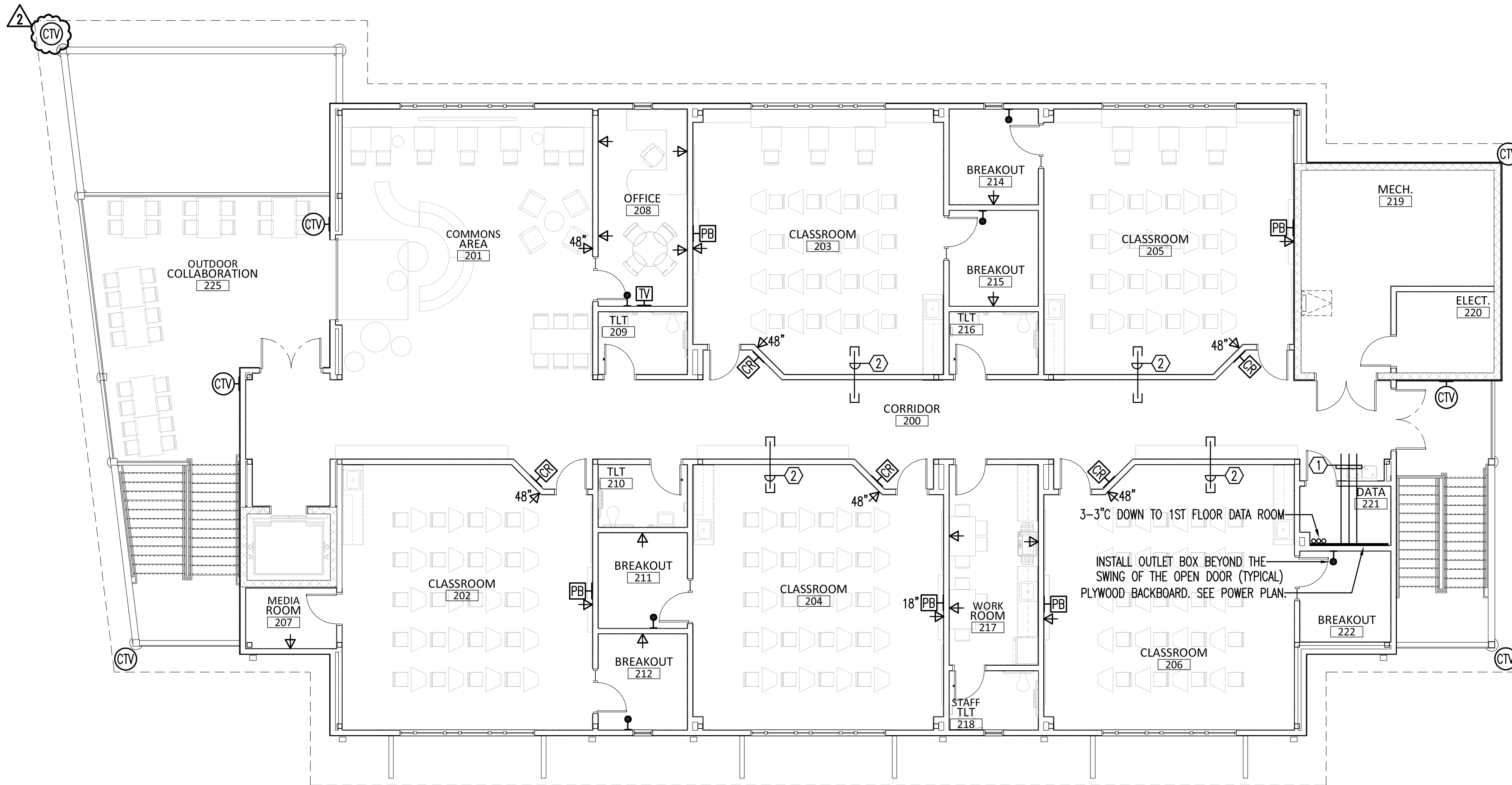
PROJECT NO. : 22028

SHEET TITLE:

SECOND FLOOR
COMMUNICATIONS SYSTEM
PLAN

SHEET NUMBER:

E110



2ND FLOOR COMMUNICATIONS SYSTEM PLAN

SCALE: 1/8" = 1'-0"

KEY NOTES

① STUB 3-3°C TO ABOVE THE CORRIDOR CEILING. TURN DOWN TO TOP OF BACKBOARD.

② INDICATES 2" CONDUIT SLEEVE ABOVE CEILING. INSTALL ENDS IN ACCESSIBLE LOCATIONS.

GENERAL NOTE

COORDINATE LOCATION OF ALL [PB] OUTLETS WITH THE ARCHITECT AND EQUIPMENT SUPPLIER SUCH THAT OUTLETS ARE CONCEALED AND ABLE TO BE ACCESSED.



GRAPHIC SCALE 1/8" = 1'-0"

KLOCKE & ASSOCIATES, INC.

Consulting Engineers

51 E. Gregory Street, Pensacola, Florida 32502, (850) 434-0989
C.A. #2695 JOHN I. KLOCKE, JR., P.E. #24338

DO NOT SCALE DRAWINGS