

SOLICITATION W50S6Y-25-B-A004 Combine Weapons Fac- LSGA239001

Addendum 04ae Q&A

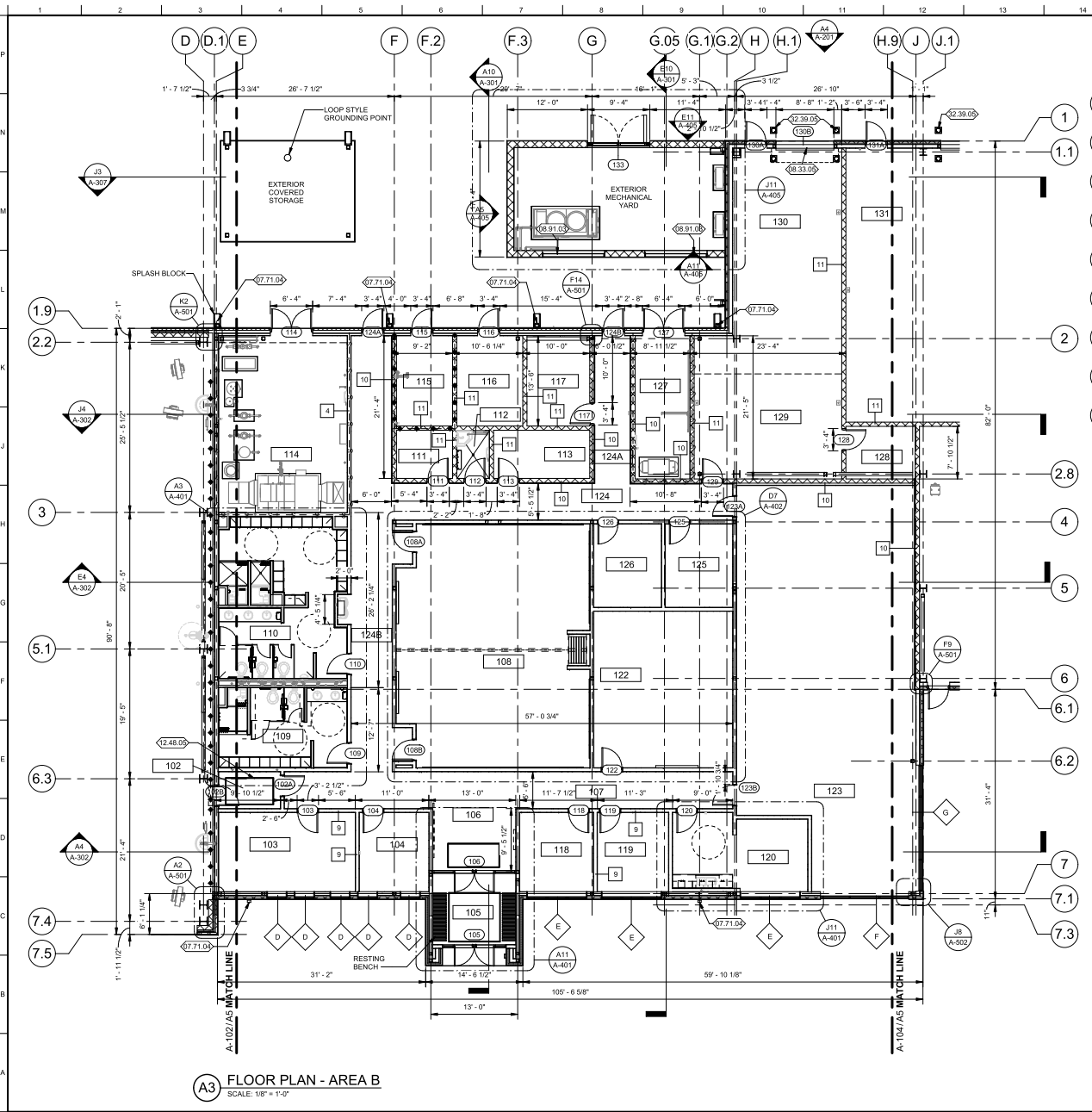
Date of Bid Inquiry: 3/11/2025

Questions 29:57

Ref. A-601: There is a note in several details that states "Acoustical batt insulation at sound rated partitions, RE Sound Rating Floor Plan for STC requirements". We did not see a Sound Rating Floor Plan. Please clarify.

AE.

J. Garza 03/13/2025: Please see attached STC rating requirements plan below. This sheet has been revised to include the requirements. Please also review the door schedule to coordinate door STC requirements.



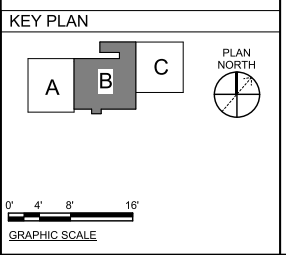
FLOOR PLAN - AREA B
SCALE: 1/8" = 1'-0"

LEGEND	
	1 HOUR RATED FIRE BARRIER
	1 HOUR SMOKE BARRIER
ROOM LEGEND (STC RATING)	
102 VEST 2 (40 STC)	51 SF
103 SHARED OFFICE (40 STC)	242 SF
104 OFFICE (40 STC)	123 SF
105 VEST 1	132 SF
106 LOBBY	104 SF
107 CORRIDOR 1	381 SF
108 CLASSROOM (40 STC)	1012 SF
109 WOMEN (40 STC)	218 SF
110 MEN (40 STC)	425 SF
111 STORAGE (40 STC)	60 SF
112 JAN CLOSET (40 STC)	36 SF
113 PPE STORAGE (40 STC)	104 SF
114 MECH 1	508 SF
115 FIRE PROTECT	113 SF
116 ELEC	133 SF
117 COMM (40 STC)	127 SF
118 WING WEAPONS MANAGER (40 STC)	130 SF
119 OFFICE (40 STC)	138 SF
120 BREAK ROOM (40 STC)	221 SF
122 TEST & TRAINING (40 STC)	486 SF
123 WEAPONS LOAD SHOP OFFICE (40 STC)	1495 SF
124 CORRIDOR 2	276 SF
124A CORRIDOR 3	117 SF
124B CORRIDOR 4	436 SF
125 WEAPONS ELEMENT SUPR (40 STC)	125 SF
126 NDCI SUPR (40 STC)	126 SF
127 MECH 2	175 SF
128 SECURITY STOR (40 STC)	82 SF
129 TOOL CRIB (40 STC)	347 SF
130 GUN SERVICING/CLEANING	581 SF

- ### SHEET NOTES
- ALL DIMENSIONS TO FACE OF FINISH OR GRID LINE UNLESS NOTED OTHERWISE.
 - CONFIRM THROUGHOUT ALL SUPPLIED EQUIPMENT LAYOUT DIMENSIONS AND MANUFACTURERS REQUIRED CLEARANCES.
 - FOR ARCHITECTURAL MATERIAL LEGEND, AND ABBREVIATIONS REFER TO A-001 SHEET.
 - REFERENCE LIFE SAFETY DRAWINGS FOR FIRE RATED WALL AND SMOKE PARTITION LOCATIONS. ALL FIRE RATED WALLS AND SMOKE PARTITIONS ARE CONTINUOUS ACROSS ALL DOOR OPENINGS.
 - FOR PARTITION TYPES CONSTRUCTION AND DESCRIPTION REFER TO PARTITION TYPES SHEETS.
 - THE CONTRACTOR SHALL VERIFY ALL DIMENSIONS, ELEVATIONS AND SITE CONDITIONS BEFORE BEGINNING ALL WORK AND FABRICATION. THE OWNER SHALL BE NOTIFIED IN WRITING IMMEDIATELY OF ANY DISCREPANCIES OR INCONSISTENCIES. IN NO CASE SHALL DIMENSIONS BE SCALED OFF PLANS, SECTIONS, OR DETAILS FROM THESE DRAWINGS.
 - DOOR LOCATIONS NOT DIMENSIONED ARE 6 INCHES FROM FACE OF GYPSUM BOARD FINISH WALL TO DOOR JAMB FACE. VERIFY THERE IS A FULL SIDE MINIMUM 18 INCHES CLEAR FROM DOOR STRIKE TO INTERSECTING WALL FOR ADA COMPLIANCE. NOTIFY CONTRACTING OFFICERS FOR NON-COMPLIANCE BEFORE SETTING DOOR FRAME AND WALL LOCATIONS.
 - CONTRACTOR SHALL COORDINATE AND PROVIDE ALL MILLWORK TRIM AND INFILL PANELS AT ALL UNDERCOUNTER CABINET LOCATIONS.
 - REFER TO FINISH SCHEDULE AND FINISH PLANS FOR ADDITIONAL FINISH INFORMATION. ALL FLOOR FINISHES TO BE CONTINUOUS UNDER MILLWORK AND EQUIPMENT UNLESS NOTED OTHERWISE.
 - REFER TO SPECIFICATION FOR LOCATIONS OF GYPSUM BOARD CONTROL JOINTS.
 - REFERENCE CIVIL DRAWINGS FOR EXTERIOR BOLLARD DETAILS.
 - REFERENCE STRUCTURAL DRAWINGS FOR ROUGH OPENING DIMENSIONS IN CMU WALLS.
 - REFERENCE THE REFLECTED CEILING PLANS FOR CEILING HEIGHTS.
 - REFER TO A-011 AND A-022 FOR PARTITION TYPES. A-011 FOR DOOR SCHEDULE AND A-022 FOR WINDOW SCHEDULE.
 - REFER TO EP109, EP110 AND EP301 FOR ELECTRICAL HAZARDOUS LOCATION AREA REQUIREMENTS.
 - PROVIDE 36" WIDE BY 44" DEEP CONCRETE LANDING AT ALL EXTERIOR EGRESS DOORS. SLOPE LANDING AWAY FROM BUILDING AT 2% MAX. EXTERIOR CONCRETE PAVING TO SLOPE TO MEET LEVEL OF LANDING. COORDINATE WITH CIVIL DRAWINGS.

KEYNOTES

07.71.00	MANUFACTURED GUTTER AND DOWNSPOUT
08.33.05	OVERHEAD RAPID COILING DOOR
08.91.03	FIXED LOUVER
12.48.05	ENTRANCE FLOOR GRATING
32.39.05	METAL FABRICATIONS - BOLLARD. CONCRETE FILLED. COLOR-SEE PAINT SCHEDULE. TYP. AT OVERHEAD COILING DOORS



JACKSONVILLE AIR NATIONAL GUARD

ISSUE DATE: JANUARY 2024
 DESIGNED BY: J. GARDNER
 CHECKED BY: R. MARTINEZ, E. B. R. DE LA ROSA
 SUBMITTED BY: R. DE LA ROSA
 PROJECT NO: 22034 JAKANSWLA-RVT
 FIRST TITLE: FLOOR & STC RATING PLAN - AREA B
 SHEET NO: 1 OF 1
 FILE NAME: A-103 A-103
 PASCAGO, CALIFORNIA 91124

PARSONS
 FEDERAL GOVERNMENT SERVICES, INC.
 100 WEST WALNUT STREET, FLOOR 400
 PASCAGO, CALIFORNIA 91124

THIS SHEET HAS BEEN DIGITALLY SIGNED AND THE DATE EQUIVALENT TO THE SEAL.
 ANY REVISIONS TO THIS SHEET THAT ARE NOT CONSIDERED SIGNED AND SEALED AND THE SIGNATURE MUST BE SIGNED IN ANY ELECTRONIC FORM.

NOT FOR CONSTRUCTION

JACKSONVILLE, FLORIDA
 F-35 CONSOLIDATED WEAPONS FACILITY
 FLOOR & STC RATING PLAN - AREA B

SHEET ID
 CWF
 A-103