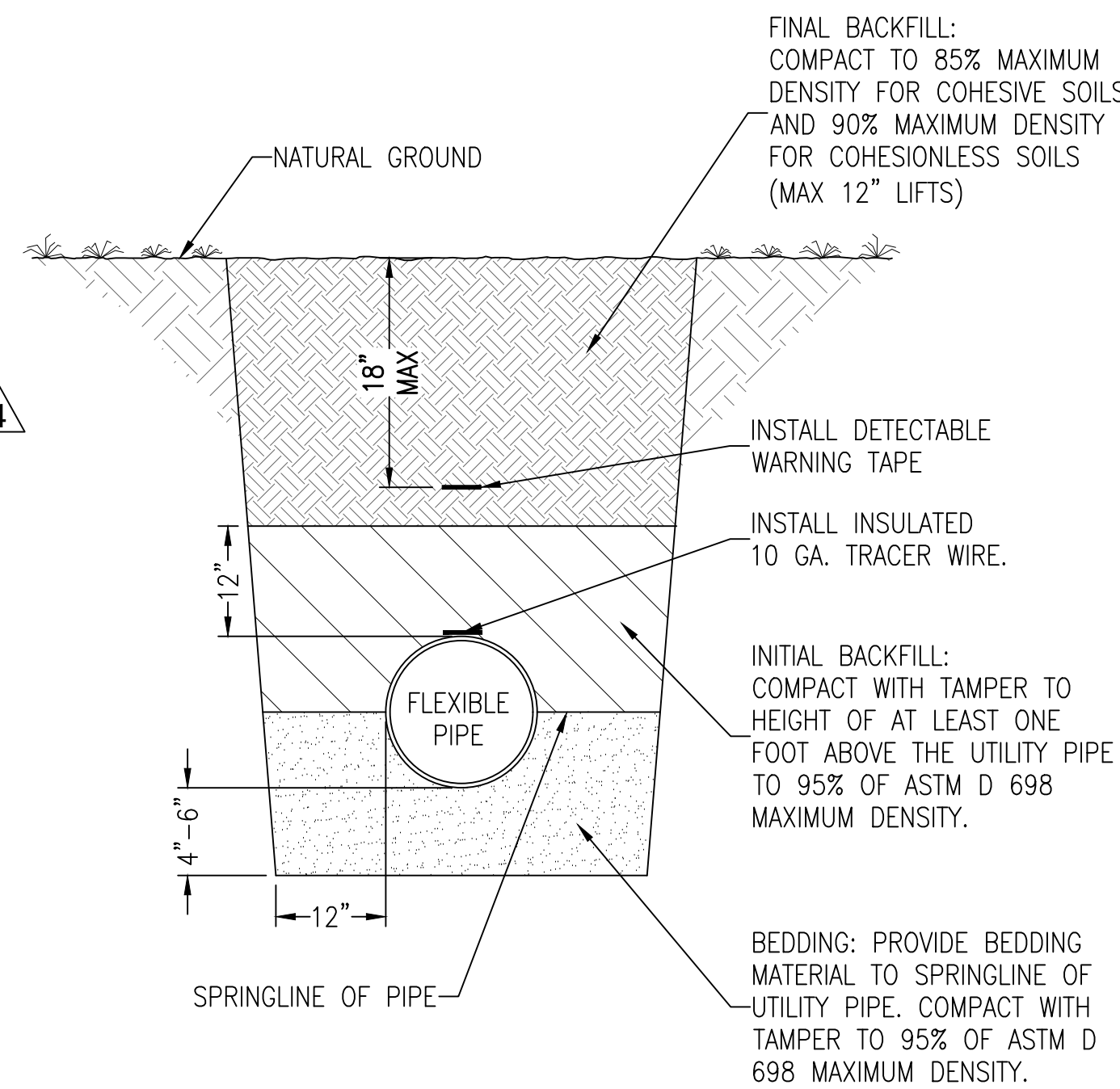
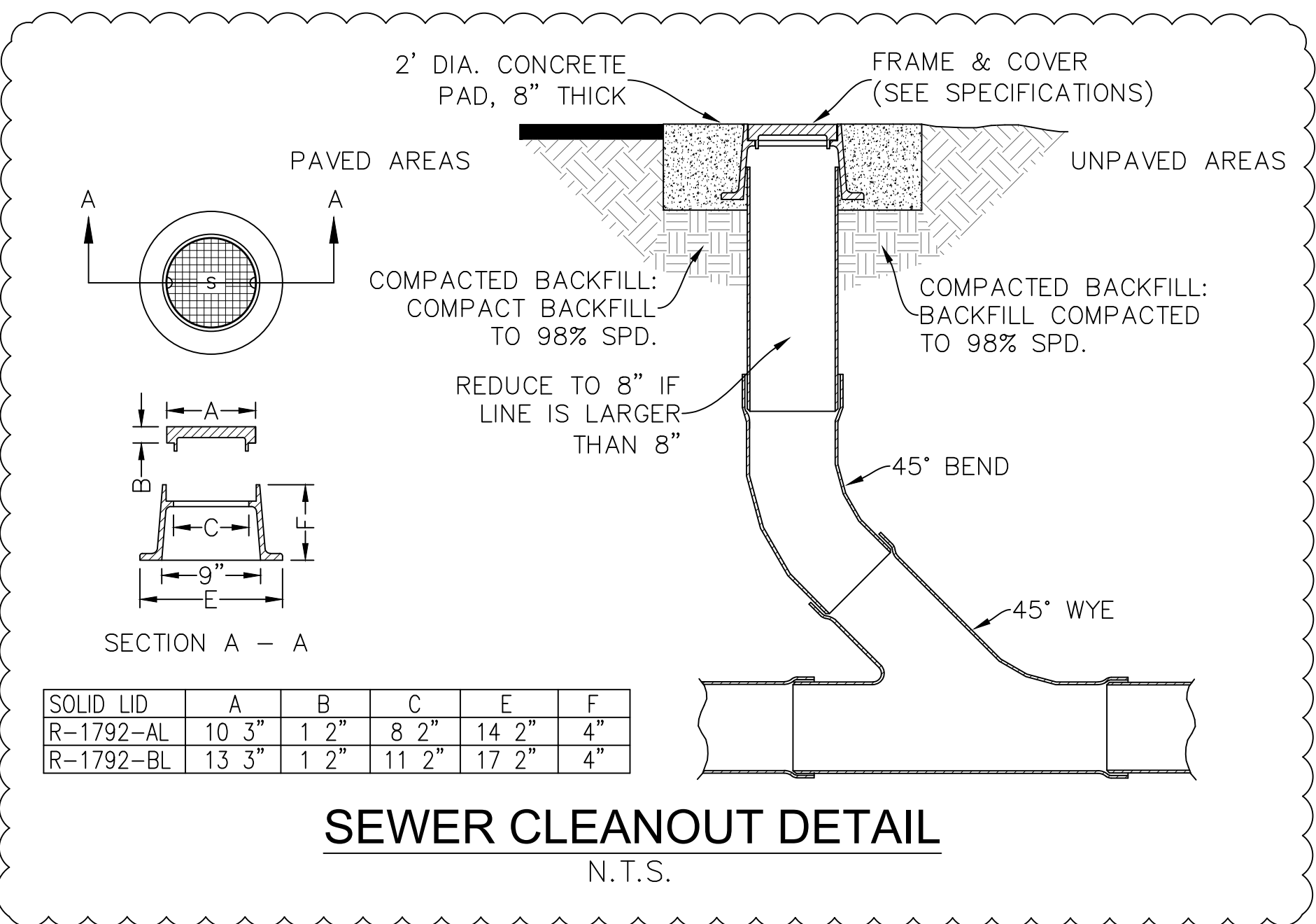
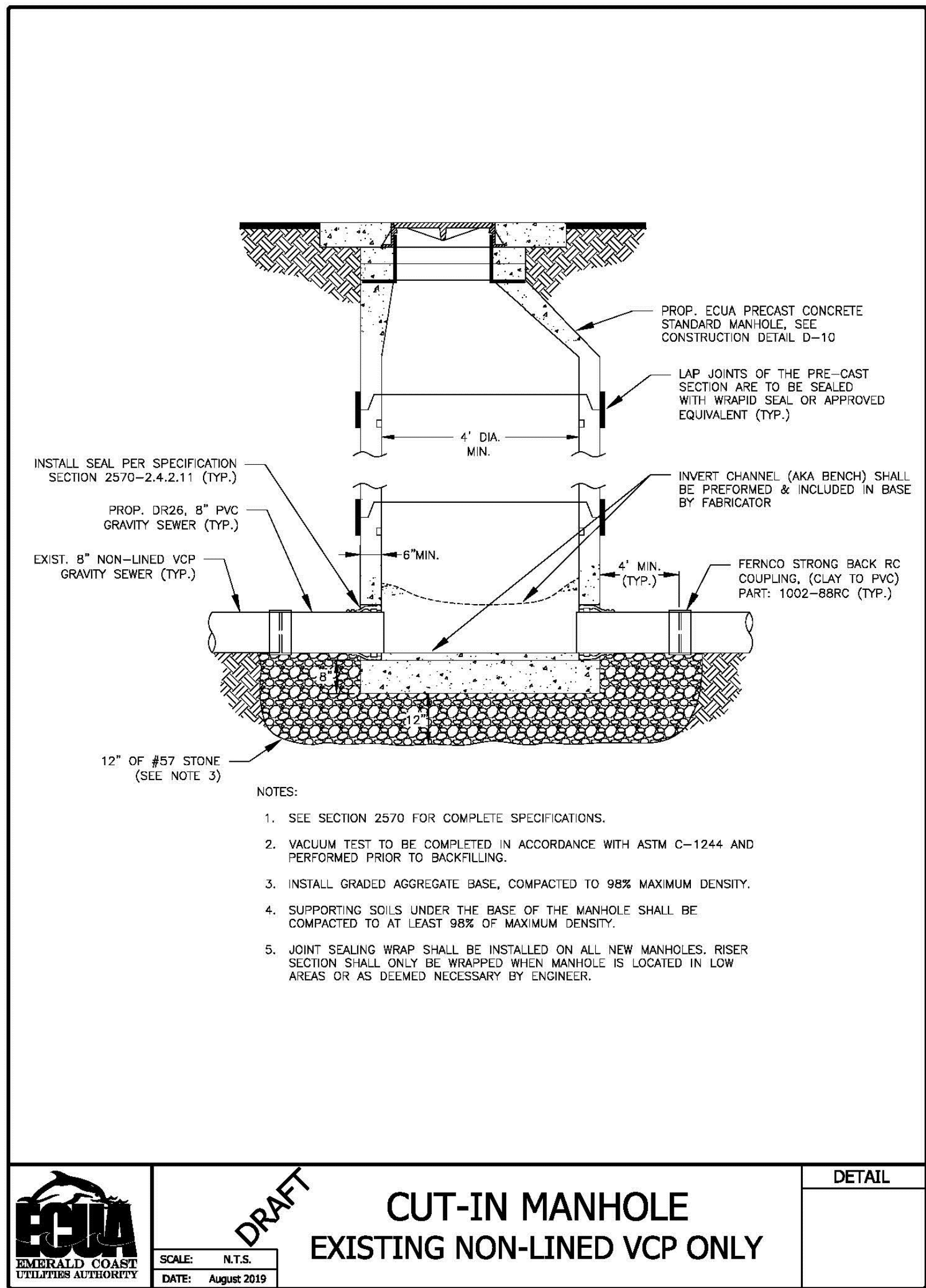


CITY OF PENSACOLA CUT & PATCH DETAIL
SCALE: NTS

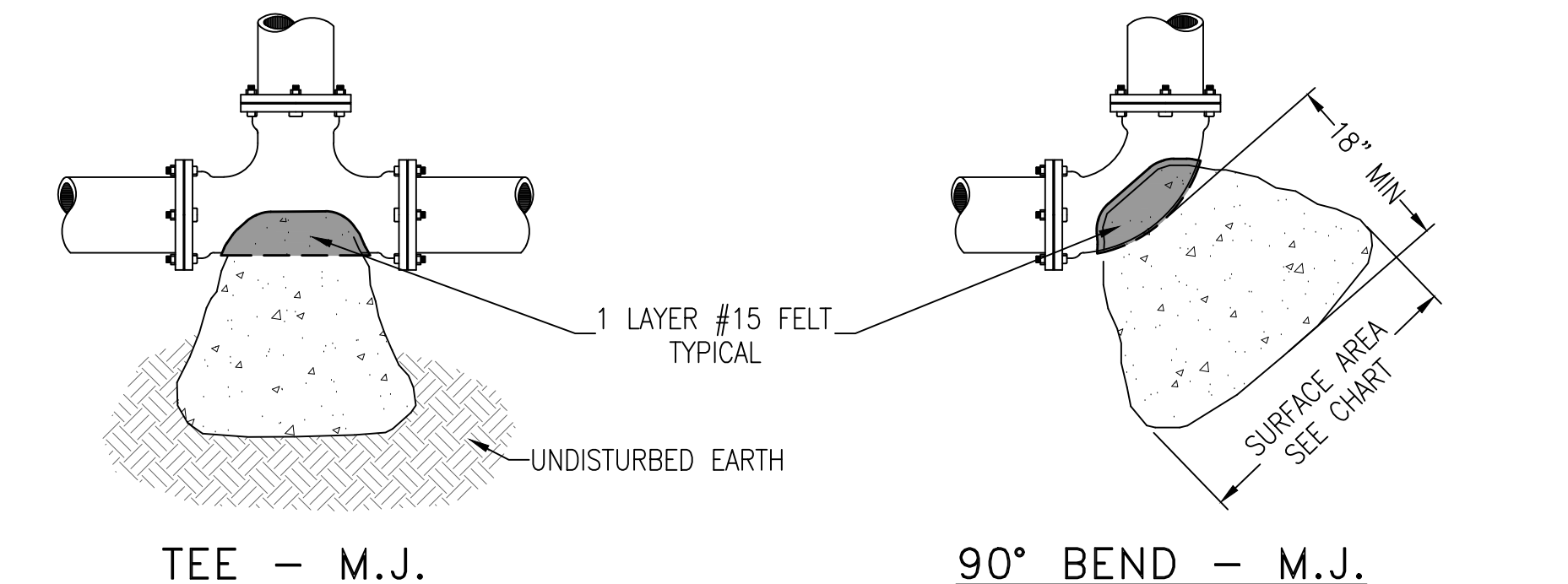
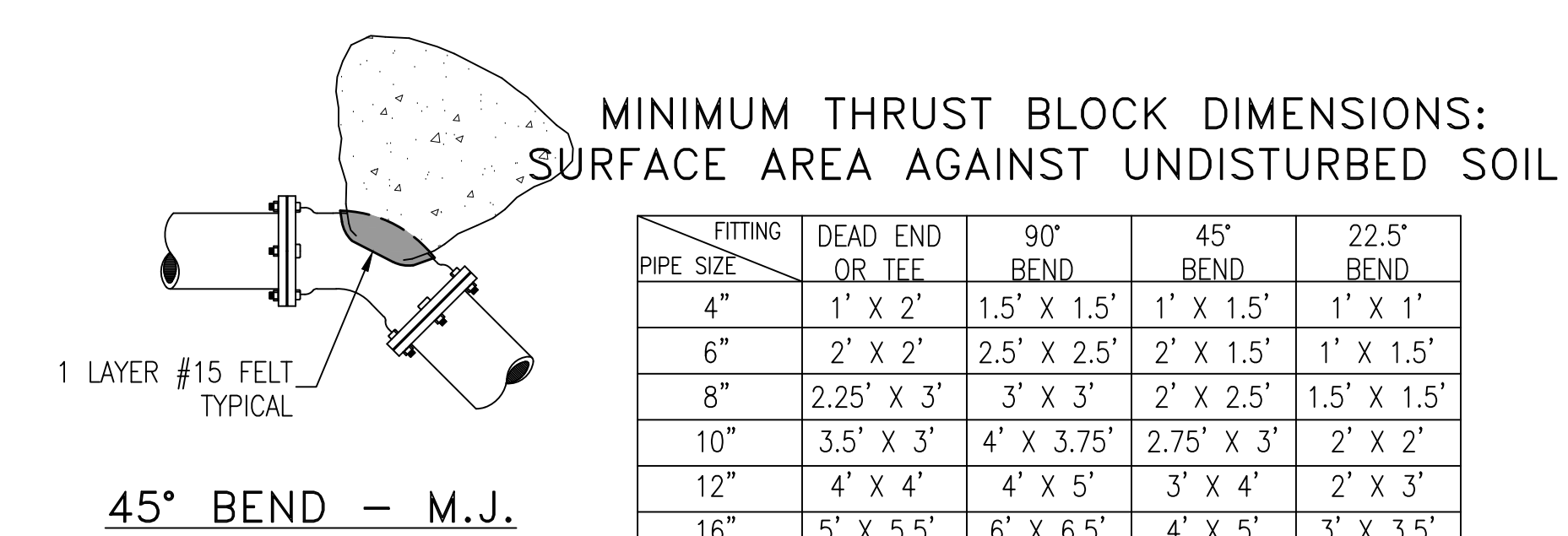


FLEXIBLE PIPE BEDDING DETAIL
N.T.S.

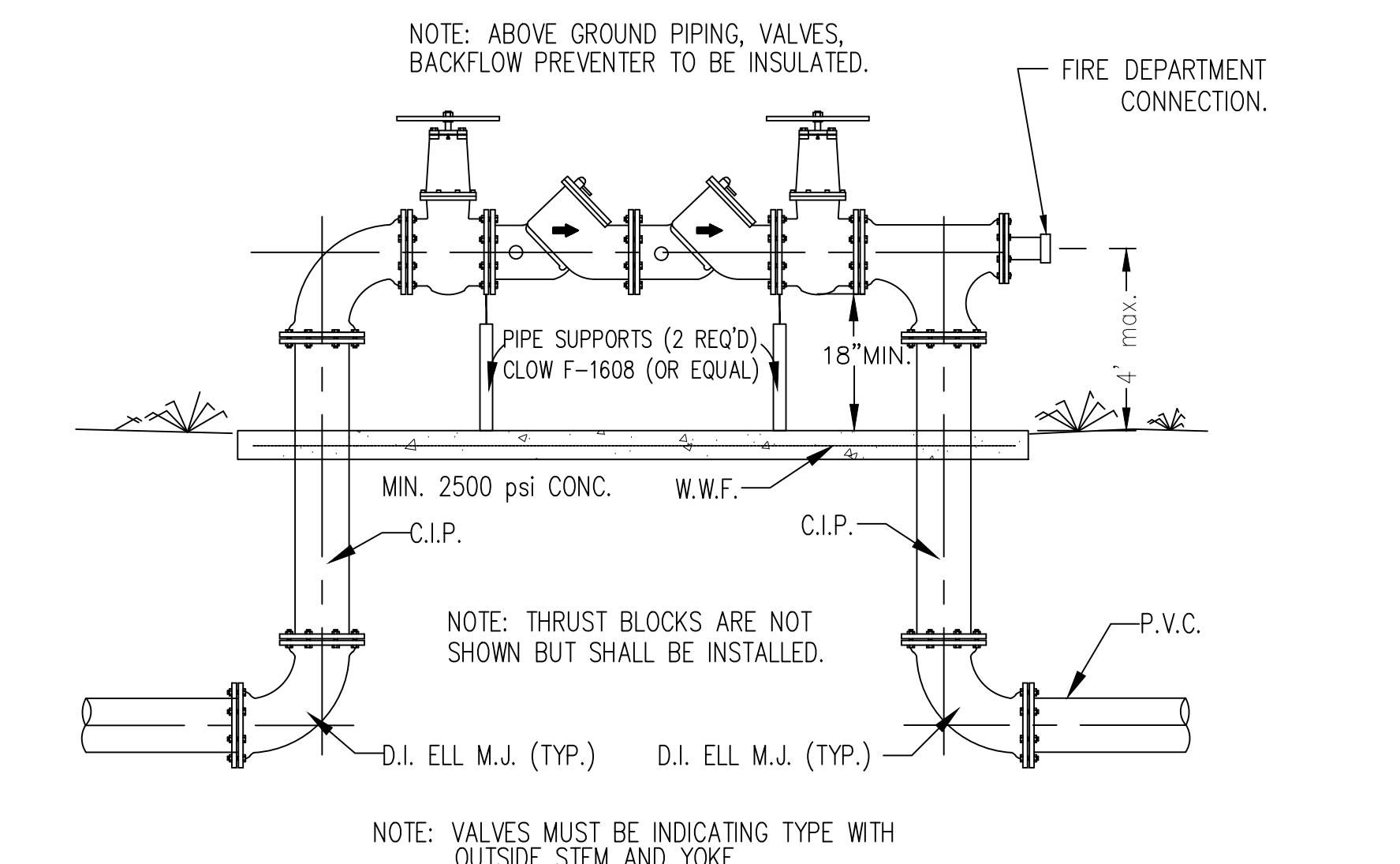
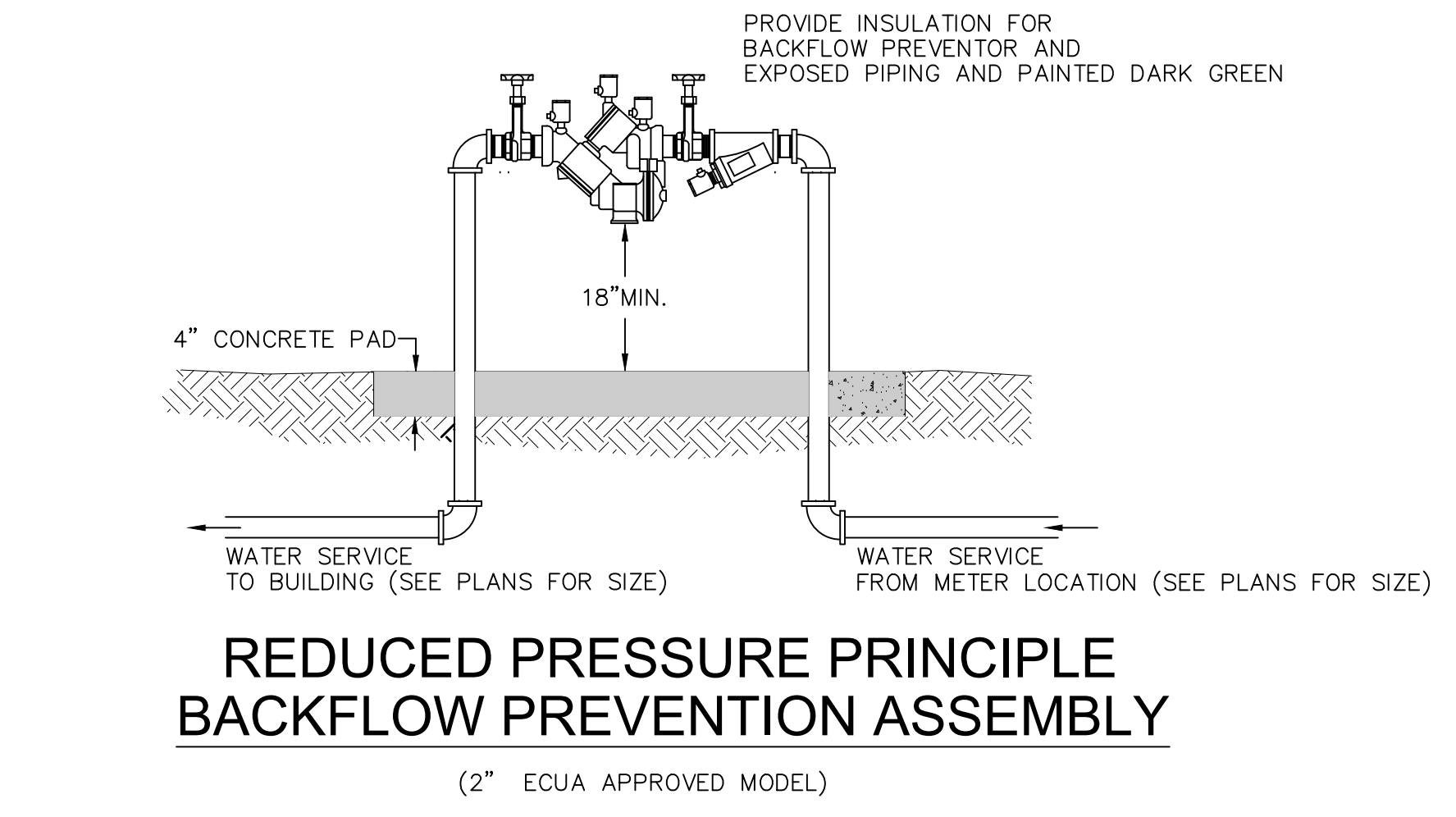
- GENERAL NOTES:**
- ASPHALTIC CONCRETE PAVEMENT JOINTS SHALL BE MECHANICALLY SAWED.
 - SURFACE TREATMENT PAVED JOINTS SHALL BE LAPPED AND FEATHERED.
 - SURFACE REPLACEMENT COURSE TO BE 3" TYPE S-3 ASPHALTIC CONCRETE AND COMPACTED IN 8" LIFTS TO A MINIMUM OF 98% STANDARD PROCTOR.
 - SUB BASE MATERIAL TO BE PLACED AND COMPACTED IN 8" LIFTS TO A MINIMUM OF 98% STANDARD PROCTOR.
 - MINIMUM SURFACE REPLACEMENT COURSE OF LONGITUDINAL CUTS TO BE ONE HALF OF EXISTING ROAD OR 12" MINIMUM.
 - LONGITUDINAL CUT REPLACEMENT BASE SHALL BE FULL DEPTH ASPHALTIC CONCRETE OR 8" CRUSHED STONE.
 - ANY VARIANCE MUST BE APPROVED ON INDIVIDUAL BASIS BY THE CITY ENGINEER.
 - PERMIT FROM ENGINEERING AND INSPECTION BY STREET DIVISION IS REQUIRED.
 - CONTACT THE STREET DIVISION AND ALL EMERGENCY SERVICES (POLICE, FIRE & EMERGENCY MEDICAL SERVICES) BEFORE COMPLETELY CLOSING A ROAD. NOTIFY THE ABOVE AGAIN ONCE THE ROAD HAS BEEN RE-OPENED.



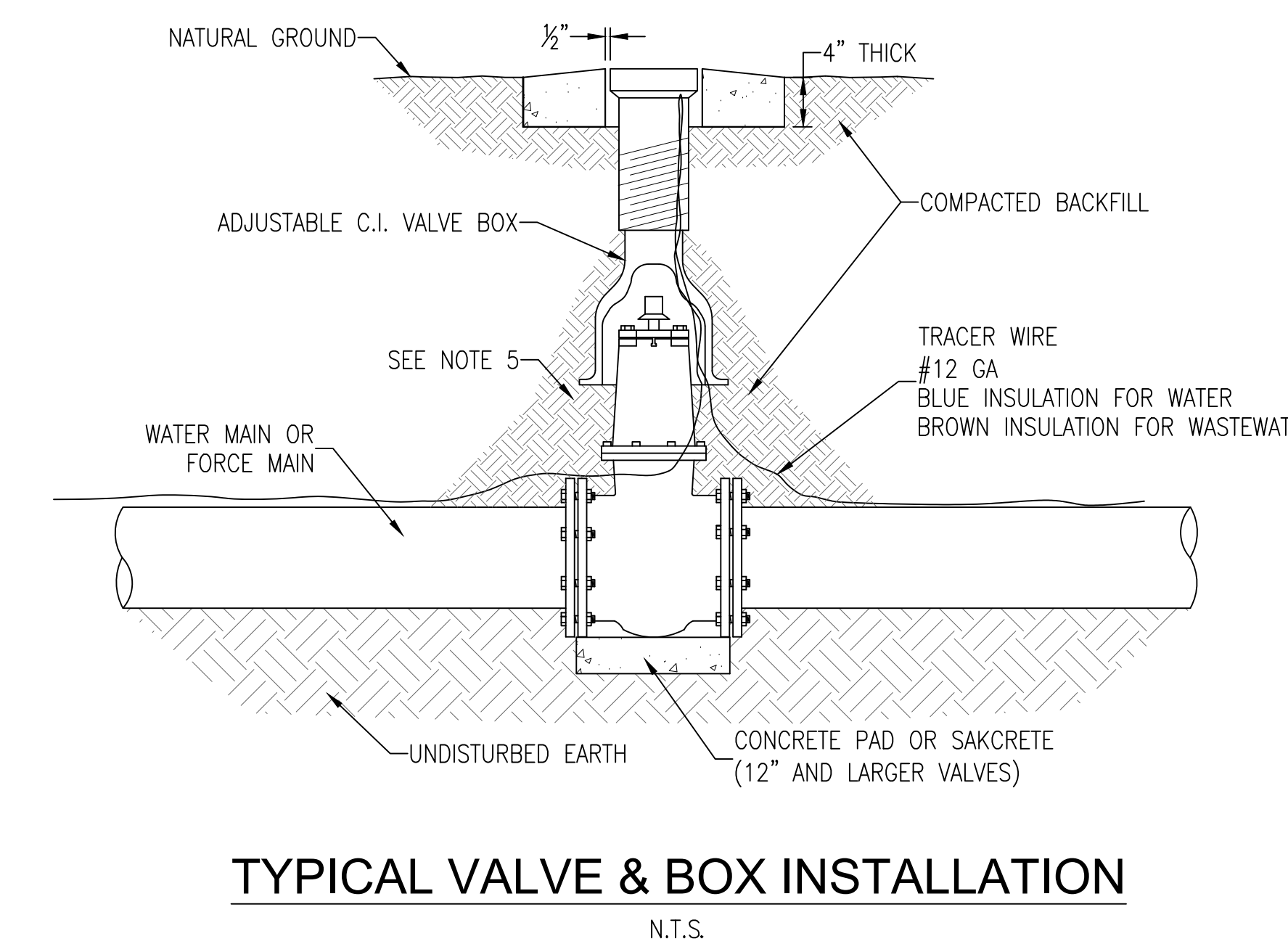
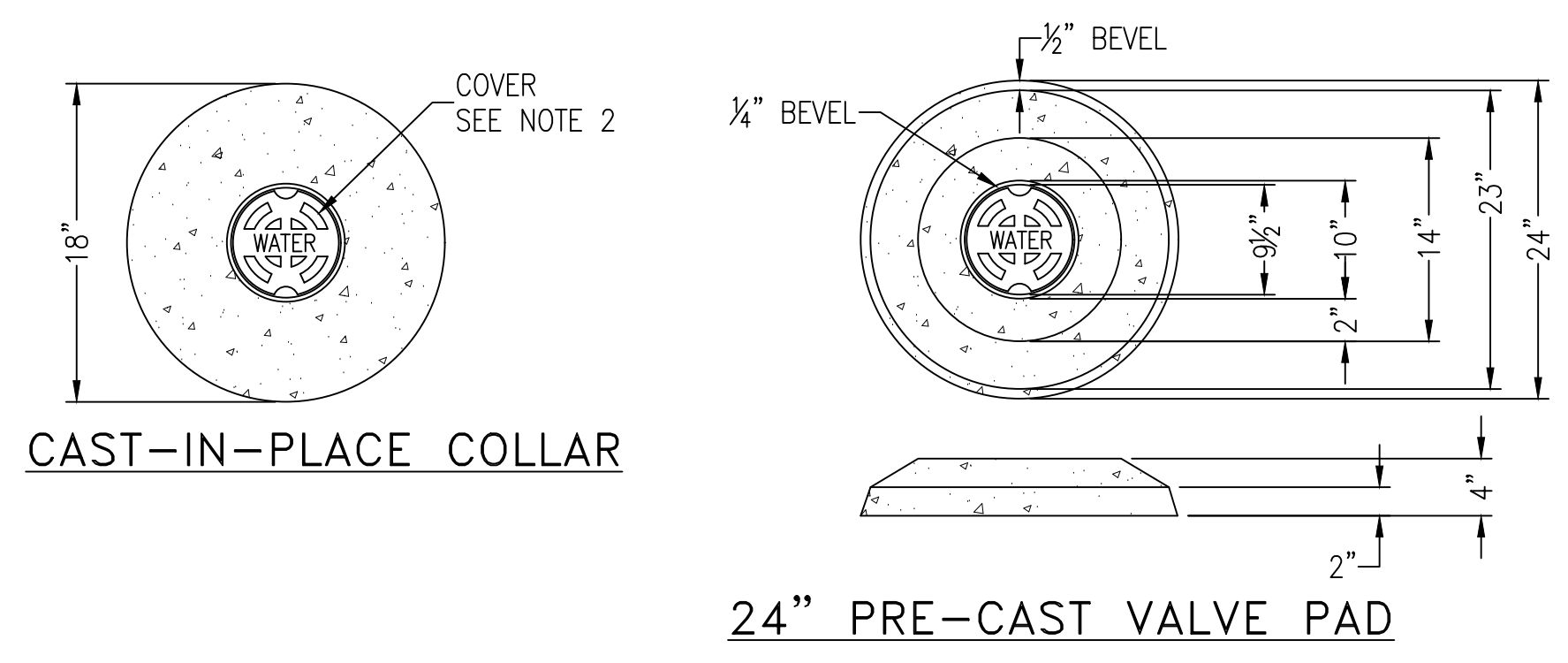
CUT-IN MANHOLE EXISTING NON-LINED VCP ONLY
SCALE: N.T.S. DATE: August 2019



TYPICAL THRUST BLOCK INSTALLATIONS
N.T.S.



DOUBLE CHECK BACKFLOW PREVENTER DETAIL
N.T.S.



TYPICAL VALVE & BOX INSTALLATION
N.T.S.

GMC

GOODWIN MILLS CAWOOD, LLC
720 Bayfront Parkway, Suite 200
Pensacola, FL 32502
T 850 432-0705
GMCNETWORK.COM
Kelly Wiecek
Qualifying Agent
FL Architect AR 96359

ISSUE DATE: 12/08/2025
PERMIT SET: 12/08/2025
REV 04: 08/16/2026

FRICKER RESOURCE CENTER RENOVATION PROJECT
900 N F St, Pensacola, FL 32501-2887
GMC # APEN260016

DRAWN BY: JCS
CHECKED BY: JMS

UTILITY DETAILS
C4.1