

Addendum No. 3

Date: 03/27/2026

Project: Pam Bay Gymnasium

DAG Project #: 22019

1A-1 General

1. The following changes and/or additions to the plans and specifications are hereby made part of same and are incorporated in full as part of the Contract documents.

1A-2 Specifications

1. Specification 06 41 16 – Interior Architectural Woodwork (Includes Plastic laminate Cabinets)

1A-3 Drawings / Cut Sheets

1. Sheet LS102, dated 2/6/26.
2. Sheet A100.A Alternate Site Plan, revision 3, Addendum 3, dated 3/27/26.
3. Sheet A100.1.A, Alternate Enlarged Site Plan, revision 3, Addendum 3, dated 3/27/26.
4. Sheet A100.2.A, Alternate Site Plan Details, revision 3, Addendum 3, dated 3/27/26.
5. Sheet A101.A, Alternate Floor Plan, revision 3, Addendum No. 3, dated 3/27/26.
6. Sheet A101.2.A, Alternate Reflected Ceiling Plan, revision 3, Addendum 3, dated 3/27/26.
7. Sheet A101.3.A, Alternate Finish Plan, revision 3, Addendum No. 3, dated 3/27/26.
8. Sheet A201.A, Alternate Exterior Elevations, revision 3, Addendum 3, dated 3/27/26.
9. Sheet A501.A, Alternate Door & Frame Schedule, revision 3, Addendum 3, dated 3/27/26.
10. Sheet A502.A, Alternate Finish Schedule, revision 3, Addendum 3, dated 3/27/26.
11. Sheet A601.A Alternate Interior Elevations, revision 3, Addendum No. 3, dated 3/27/26.
12. Ice Machine Cut Sheet

1A-4 Answers & Clarifications to Bidder Questions & Comments

1. Could you please provide finishes for vanities and toilet partitions. [Toilet partitions, vanities will be HDPE. Basis of design: Scranton Products](#)

2. Could you please provide elevations and finishes for the warm kitchen (which is now called Concessions, Room 108). See attached sheet A601 for interior elevations of cabinets in the concessions area. We have also attached Specification 06 41 16 – Interior Architectural Woodwork which includes specifications regarding the plastic laminate cabinets.
3. Could you please provide finish schedule? See attached, revised Sheet A101.3 – Alternate Finish Plan.
4. Please provide signage schedule per specification 10 14 23.16. Contractor to include an allowance for signage as follows:
 - \$2,000.00 Interior room signs
 - \$21,000.00 Exterior Sign (Palm / Letters)
 - \$4,500.00 Dedication Plaque
 - \$4500 Installation
 - Total: \$32,000.00

Approved Manufacturer:

Advanced Sign Solution
7518 McElvey Road
Panama City FL 32408
Contact: Adam Kimball- President / Owner
kimball@adv-signs.com
Cell: 850-914-9925

5. There were some forms in the original specifications that were not included in the front-end documents provided by Palm Bay. Do we need to provide the following:
 - List of Subcontractors
 - Public Entity Crimes Form
 - Drug Free Workplace Form
 - Material Safety Data Form
 - AIA Document A305 – Contractors Qualification Statement

Yes, please include the above forms with your bid

6. Please provide Clarification reading the Addendum 1 bid form, item #7. See below.

Biden agrees that the work will be completed and ready for final payment within **one hundred and twenty** (420) calendar days from the date of Contract Commencement as specified in the Notice to Proceed.

Please revise the “one hundred and twenty” to “four hundred and twenty”.

7. Does the 12” trench drain still need to be installed? **Yes**
8. I did not receive Sheet LS102 dated 2/6/26. See attached.

Addendum # 3

9. Please provide cut sheets on appliances for Concessions. See attached cut sheet for ice machine. Contractor to coordinate with plumbing sub to include water connection and floor drain. There are also drink coolers shown but they are by Owner.
10. Please provide detail and specification for the powered wheelchair lift. The wheelchair lift was deleted when we added the ramp adjacent to the stage.
11. Rooms 201 and 203 are not listed in the finish schedule. See revised finish schedule. Contractor to provide 4" concrete over metal decking with perimeter angle. Provide a sealed concrete finish.
12. Will there be a grading plan for the adjacent / future addition site. No. Please final grade to slope away from building and install sod / and provide an allowance for irrigation in this area.

SECTION 06 41 16 - INTERIOR ARCHITECTURAL WOODWORK

PART 1 - GENERAL

1.1 SUMMARY

- A. This Section includes the following:
 - 1. Plastic-laminate cabinets.
- B. Interior architectural woodwork includes wood furring, blocking, shims, and hanging strips unless concealed within other construction before woodwork installation.

1.2 SUBMITTALS

- A. Product Data: For cabinet hardware and accessories.
- B. Shop Drawings: Show location of each item, dimensioned plans and elevations, large-scale details, attachment devices, and other components.
- C. Samples:
 - 1. Lumber and panel products with shop-applied opaque finish, for each finish system and color, with exposed surface finished.
 - 2. Plastic-laminates, for each type, color, pattern, and surface finish.

1.3 QUALITY ASSURANCE

- A. Quality Standard: Unless otherwise indicated, comply with AWI's "Architectural Woodwork Quality Standards".

1.4 PROJECT CONDITIONS

- A. Environmental Limitations: Do not deliver or install woodwork until building is enclosed, wet work is complete, and HVAC system is operating and maintaining temperature and relative humidity at occupancy levels during the remainder of the construction period.
- B. Field Measurements: Where woodwork is indicated to fit to other construction, verify dimensions of other construction by field measurements before fabrication, and indicate measurements on Shop Drawings. Coordinate fabrication schedule with construction progress to avoid delaying the Work.
 - 1. Locate concealed framing, blocking, and reinforcements that support woodwork by field measurements before being enclosed, and indicate measurements on Shop Drawings.

PART 2 - PRODUCTS

2.1 MATERIALS

- A. Wood Products:
 - 1. Hardboard: AHA A135.4.
 - 2. Medium-Density Fiberboard: ANSI A208.2, Grade MD, made with binder containing no urea formaldehyde.
 - 3. Particleboard: ANSI A208.1, Grade M-2-Exterior Glue.
 - 4. Softwood Plywood: DOC PS 1, Medium Density Overlay.
 - 5. Veneer-Faced Panel Products (Hardwood Plywood): HPVA HP-1, made with adhesive containing no urea formaldehyde.

- B. Melamine: Particleboard or medium-density fiberboard finished with thermally fused, melamine-impregnated decorative paper complying with LMA SAT-1.
- C. High-Pressure Decorative Laminate: NEMA LD 3, grades as indicated or, if not indicated, as required by woodwork quality standard.

2.2 CABINET HARDWARE AND ACCESSORIES

- A. General: Provide cabinet hardware and accessory materials associated with architectural woodwork, except for items specified in Division 08 Section "Door Hardware".
- B. Frameless Concealed Hinges (European Type): BHMA A156.9, B01602, self-closing.
- C. Wire Pulls: Back mounted, solid metal 4 inches (100 mm) long, 5/16 inch (8 mm) in diameter.
- D. Adjustable Shelf Standards and Supports: BHMA A 156.9, B04071; with shelf rest, B04081 and BHMA A 156.9, B04102; with shelf brackets. B04112.
- E. Drawer Slides: BHMA A156.9, B05091.
 - 1. Standard Duty (Grade 1, Grade 2, and Grade 3): Side mounted and extending under bottom edge of drawer; full-extension type; zinc-plated steel or epoxy-coated steel with polymer rollers.
 - 2. Heavy Duty (Grade 1HD-100 and Grade 1HD-200): Side mounted; full-overtravel-extension type; zinc-plated steel ball-bearing slides.
 - 3. Box Drawer Slides: Grade 1; for drawers not more than 6 inches (150 mm) high and 24 inches (600 mm) wide
 - 4. File Drawer Slides: Grade 1HD-100; for drawers more than 6 inches (150 mm) high or 24 inches (600 mm) wide.
 - 5. Pencil Drawer Slides: Grade 2; for drawers not more than 3 inches (75 mm) high and 24 inches (600 mm) wide.
 - 6. Keyboard Slides: Grade 1; for computer keyboard shelves.
- F. Door Locks: BHMA A156.11, E07121. Provide locks at all doors and drawers unless noted otherwise.
- G. Drawer Locks: BHMA A156.11, E07041. Provide locks at all drawers unless noted otherwise.
- H. Grommets for Cable Passage through Countertops: 2-inch (51-mm) OD, molded-plastic grommets and matching plastic caps with slot for wire passage.
 - 1. Product: Subject to compliance with requirements, provide "SG series" by Doug Mockett & Company, Inc.
- I. Exposed Hardware Finishes: For exposed hardware, provide finish that complies with BHMA A156.18 for BHMA finish number indicated.
 - 1. Satin Stainless Steel: BHMA 630.
- J. For concealed hardware, provide manufacturer's standard finish that complies with product class requirements in BHMA 156.9.

2.3 MISCELLANEOUS MATERIALS

- A. Furring, Blocking, Shims, and Hanging Strips: Softwood or hardwood lumber, fire-retardant-treated, kiln-dried to less than 15 percent moisture content.
- B. Adhesives, General: Do not use adhesives that contain urea formaldehyde.

2.4 FABRICATION

- A. General: Complete fabrication to maximum extent possible before shipment to Project site. Where necessary for fitting at site, provide allowance for scribing, trimming, and fitting.
 - 1. Fabricate to AWI Premium quality standards.

2. Shop cut openings to maximum extent possible. Sand edges of cutouts to remove splinters and burrs. Seal edges of openings in countertops with a coat of varnish.
- B. Shelving: Plastic laminate **1 INCH** (19-mm) particle board shelving with PVC front edge. Plastic laminate and paint color of brackets to be selected by Architect.
- C. Plastic-Laminate Cabinets:
 1. Provide two colors of laminate. WILSONART. Basis of Design.
 2. Quality Standard: Comply with AWI Section 400 requirements for Laminate cabinets.
 3. Grade: Custom.
 4. AWI Type of Cabinet Construction: Flush overlay.
 5. Grain or Pattern Direction: Vertically for drawer fronts, doors, and fixed panels.
 6. Laminate Cladding for Exposed Surfaces: High-pressure decorative laminate over 3/4-inch particleboard as follows:
 - a. Horizontal Surfaces Other Than Tops: Grade HGS.
 - b. Postformed Surfaces: Grade HGP.
 - c. Vertical Surfaces: Grade HGS.
 - d. Edges: Lumber edge for transparent finish matching wood species and cut on cabinet surfaces PVC edge banding, 0.12 inch (3-mm) thick, matching laminate in color, pattern and finish.
 - 1) All edge banding must be free of delamination, bubbles, and all adhesive residues.
 - 2) All edges must be banded.
 7. Materials for Semiexposed Surfaces Other Than Drawer Bodies: Melamine, over 3/4-inch particleboard. High-pressure decorative laminate, Grade HGS.
 - a. To include, but not limited to the following:
 - 1) Interior shelving.
 - b. Melamine Color:
 - 1) To be selected by Architect.
 - c. Edges of Plastic-Laminate Shelves: PVC edge banding, 0.12 inch (3-mm) thick, matching laminate in color, pattern and finish.
 - 1) All edge banding must be free of delamination, bubbles, and all adhesive residue.
 - 2) All edges must be banded.
 8. Drawer Sides and Backs: High pressure decorative laminate (melamine) on 7 ply veneer core substrate; all visible surfaces with drawer in normal open position, compatible with interior finish or solid hardwood lumber (minimum of 1/2-inch thick).
 - a. Melamine Color:
 - 1) To be selected by Architect.
 9. Drawer Bottoms: Melamine, over 1/4-inch veneer core panel product "B" face hardwood veneer or thermoset decorative overlay panel product.
 - a. Melamine Color:
 - 1) To be selected by Architect.
 10. Joinery for Case Body Members:
 - a. Tops, Exposed Ends and Bottoms:
 - 1) Stop dado, glued under pressure and either nailed, or screwed (fasteners will not be visible on exposed parts).
 - 2) Doweled, glued under pressure (approximately 4 dowels per foot of joint).
 - 3) European assembly screws (37 mm from end, 128 mm on center, fasteners will not be visible on exposed parts).
 - b. Exposed End Corner Details and Face Frame Attachment:
 - 1) Mitered joint: lock miter or spline or biscuit, glued under pressure (no visible fasteners).

- 2) Non-mitered joints, i.e. 90 degree applications: butt joint glued under pressure (no visible fasteners).
- c. Cabinet Backs – Wall Hung: Wall hung cabinet backs must be relied upon to support the full weight of the cabinet and its anticipated load for hanging/mounting purposes. Hanging/mounting mechanisms should transfer load to case body members.
 - 1) Full bound, captured in grooves on cabinet sides, top and bottom.
 - 2) Full overlay, plant-on backs: Minimum 1/2-inch thick attached with minimum #12 plated (not case-hardened) screws spaced minimum 3-inches on center. Anchor strips not required for backs 1/2-inch and thicker so attached. Edge of back should not be exposed on finished ends.
- d. Cabinet Backs – Floor Standing:
 - 1) Side bound, captured in grooves; glued and fastened to top and bottom.
 - 2) Full overlay, plant-on backs: minimum 1/2-inch thick attached with minimum #12 plated (not case-hardened) screws spaced minimum 3-inches on center. Anchor strips not required for back 1/2-inch and thicker so attached. Edge of back should not be exposed on finished ends.
- e. Anchor Strips for cabinet backs less than 1/2-inch thick: Minimum 1/2-inch thick lumber or panel product, minimum 2-1/2-inches width; securely attached to the wall side of the cabinet back – top and bottom for wall hung cabinets, top only for floor standing cabinets.
11. Drawer Construction Techniques and Supports:
 - a. Multiple Dovetail (all corners), French Dovetail front/dadoed back, glued under pressure.
 - b. Doweled, glued under pressure (minimum 32 mm dowel spacing to 4-inch high, 64 mm dowel spacing above 4-inches).
 - c. Lock Shoulder, glued and pin nailed.
 - d. Bottoms shall be set into sides, back and front, 1/4-inch deep groove with minimum 3/8-inch standing shoulder.
12. Drawer Hardware Static Load: Combination metal and roller bearing drawer slides.
13. Adjustable Shelf Techniques and Support: Metal shelf standards (recessed flush) or Multiple holes (minimum 5-mm diameter with pins).
14. Colors, Patterns, and Finishes: As selected by Architect from laminate manufacturer's full range of solid colors, wood grains or pattern finishes.
15. Provide dust panels of 1/4-inch (6.4-mm) plywood or tempered hardboard above compartments and drawers, unless located directly under tops.

2.5 SHOP FINISHING

- A. General: The entire finish of interior architectural woodwork is specified in this Section, regardless of whether shop applied or applied after installation. The extent to which the final finish is applied at fabrication shop is Contractor's option, except shop apply at least the prime coat before delivery. Refer to Division 9 Section "Painting" for final finishing of installed architectural woodwork and for stain, varnish and sealer.
- B. Final touchup, filling countersunk fasteners, cleaning and polishing after installation.

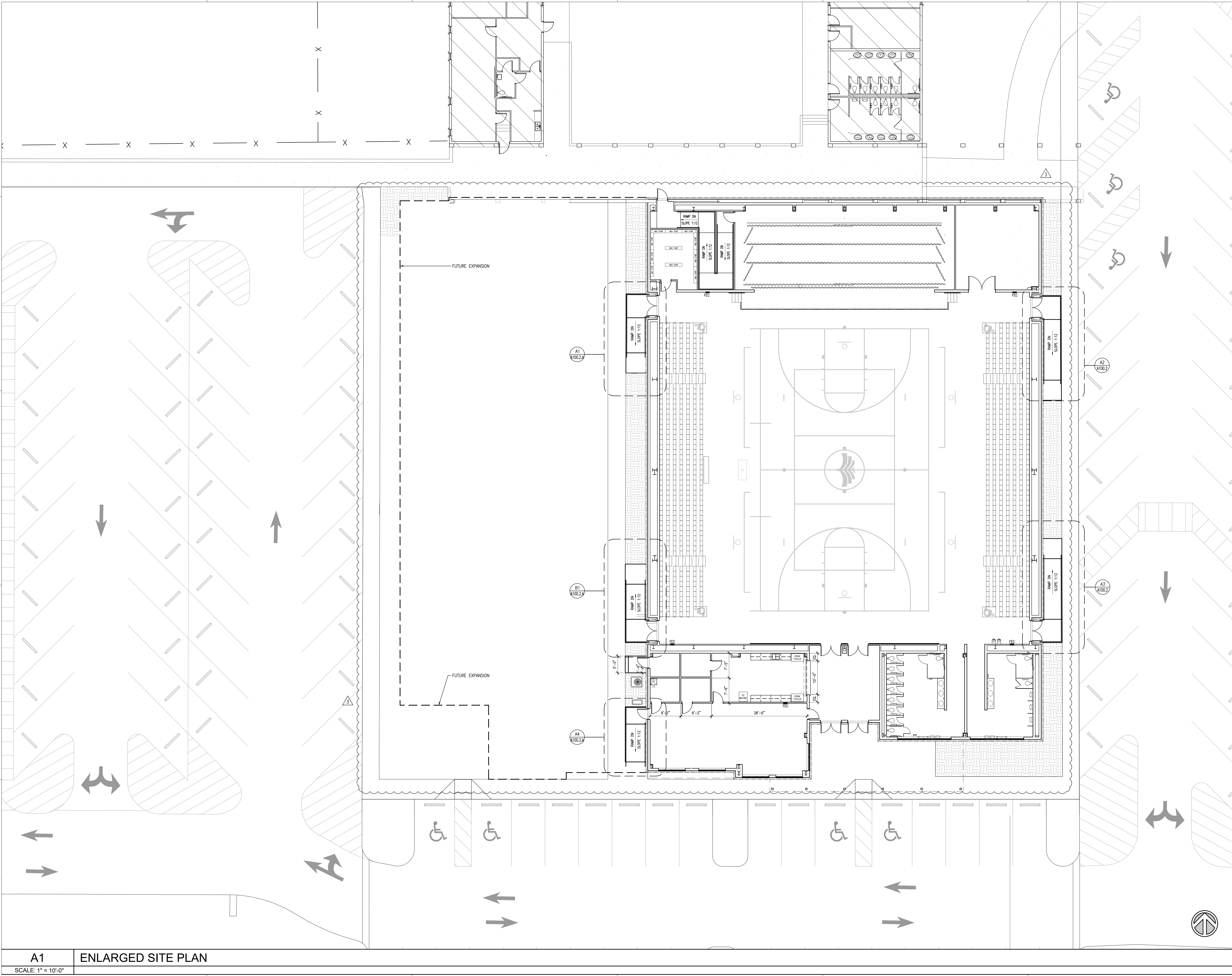
PART 3 - EXECUTION

3.1 INSTALLATION

- A. Before installation, condition woodwork to average prevailing humidity conditions in installation areas. Examine shop-fabricated work for completion and complete work as required, including removal of packing and backpriming.
- B. Grade: Install woodwork to comply with requirements for the same grade specified in Part 2 for fabrication of type of woodwork involved.
- C. Install woodwork level, plumb, true, and straight to a tolerance of 1/8 inch in 96 inches (3 mm in 2400 mm). Shim as required with concealed shims.
- D. Scribe and cut woodwork to fit adjoining work, refinish cut surfaces, and repair damaged finish at cuts.
- E. Anchor woodwork to anchors or blocking built in or directly attached to substrates. Secure with countersunk, concealed fasteners and blind nailing as required for complete installation. Use fine finishing nails or finishing screws for exposed fastening, countersunk and filled flush with woodwork and matching final finish if transparent finish is indicated.
- F. Cabinets: Install without distortion so doors and drawers fit openings properly and are accurately aligned. Adjust hardware to center doors and drawers in openings and to provide unencumbered operation.
 - 1. Fasten wall cabinets through back, near top and bottom, at ends and not more than 16 inches (400 mm) o.c.
- G. Countertops: Anchor securely by screwing through corner blocks of base cabinets or other supports into underside of countertop. Calk space between backsplash and wall with sealant specified in Division 07 Section "Joint Sealants."

END OF SECTION 06 41 16

PLOT DATE: 3/27/2025 10:34:54 AM
 DWG. LOCATION: C:\PC\Harrison\Projects\2019 Palm Bay Gymnasium\Design\25\25\A100.1.A Site Plan.dwg
 © 2021 DAG ARCHITECTS, INC. ALL RIGHTS RESERVED. NO PART OF THIS DOCUMENT MAY BE COPIED, REPRODUCED OR TRANSMITTED BY ANY MEANS WITHOUT WRITTEN PERMISSION OF DAG ARCHITECTS, INC. THESE DRAWINGS AND SPECIFICATIONS ARE THE PROPERTY AND COPYRIGHT OF DAG ARCHITECTS, INC. AND SHALL NOT BE USED ON ANY OTHER PROJECT OR LOCATION EXCEPT AS DESCRIBED ON THE DRAWINGS, WITHOUT THE PRIOR WRITTEN AGREEMENT OF DAG ARCHITECTS.



DAG

ARCHITECTS

DAG Architects AR000694
 455 Harrison Ave Suite 1 Panama City, FL 32401
 850.387.1871
 www.DAGarchitects.com

100% CONSTRUCTION DOCUMENTS

A New Gymnasium for:
PALM BAY CHARTER SCHOOLS
 1104 Balboa Avenue, Panama City, FL 32401

REVISIONS:

No.	Description	Date
3	ADDENDUM NO. 3	3/27/25

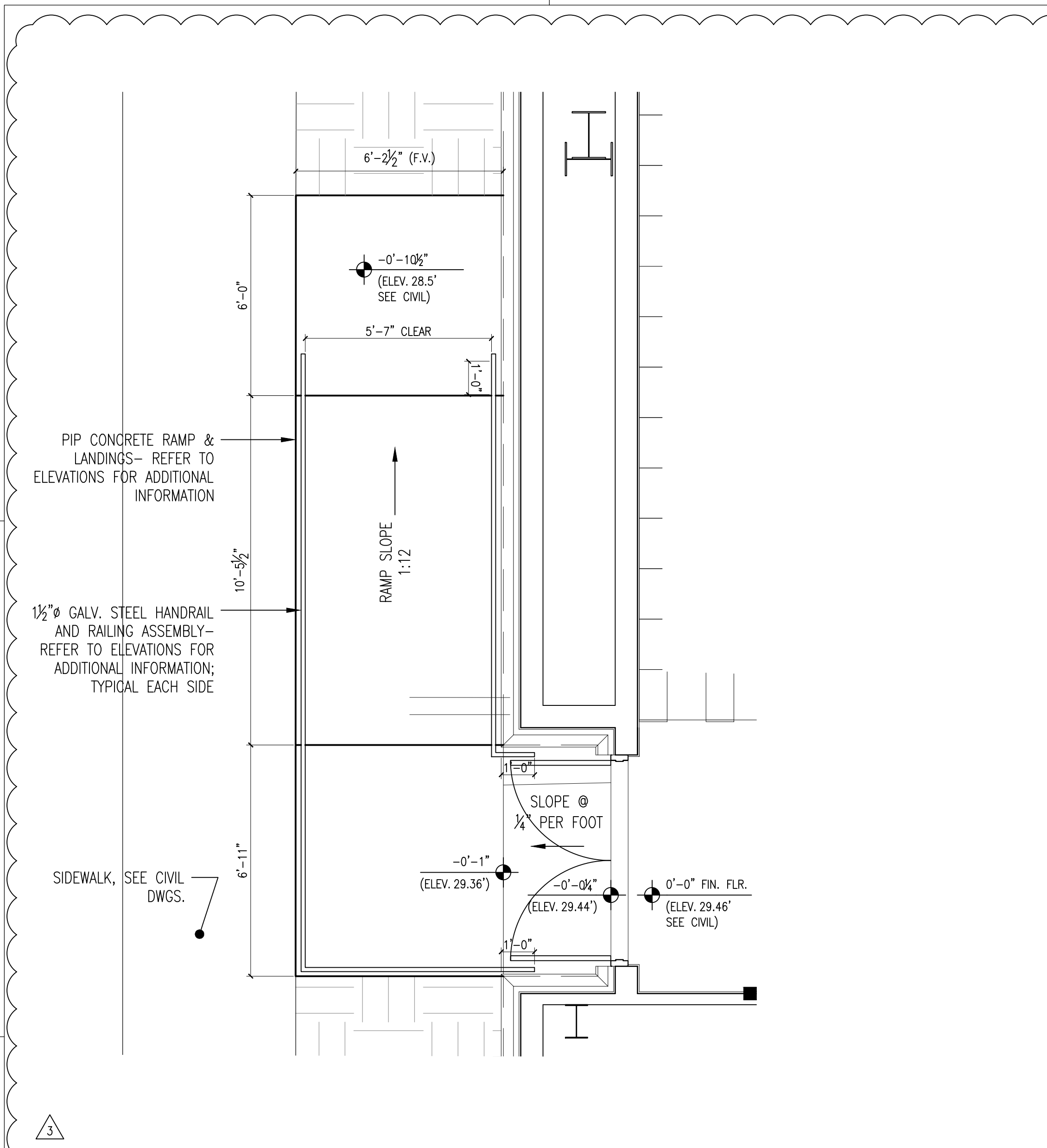
ALTERNATE ENLARGED SITE PLAN

PROJECT NUMBER: **22019**
 DATED: 01/31/2025

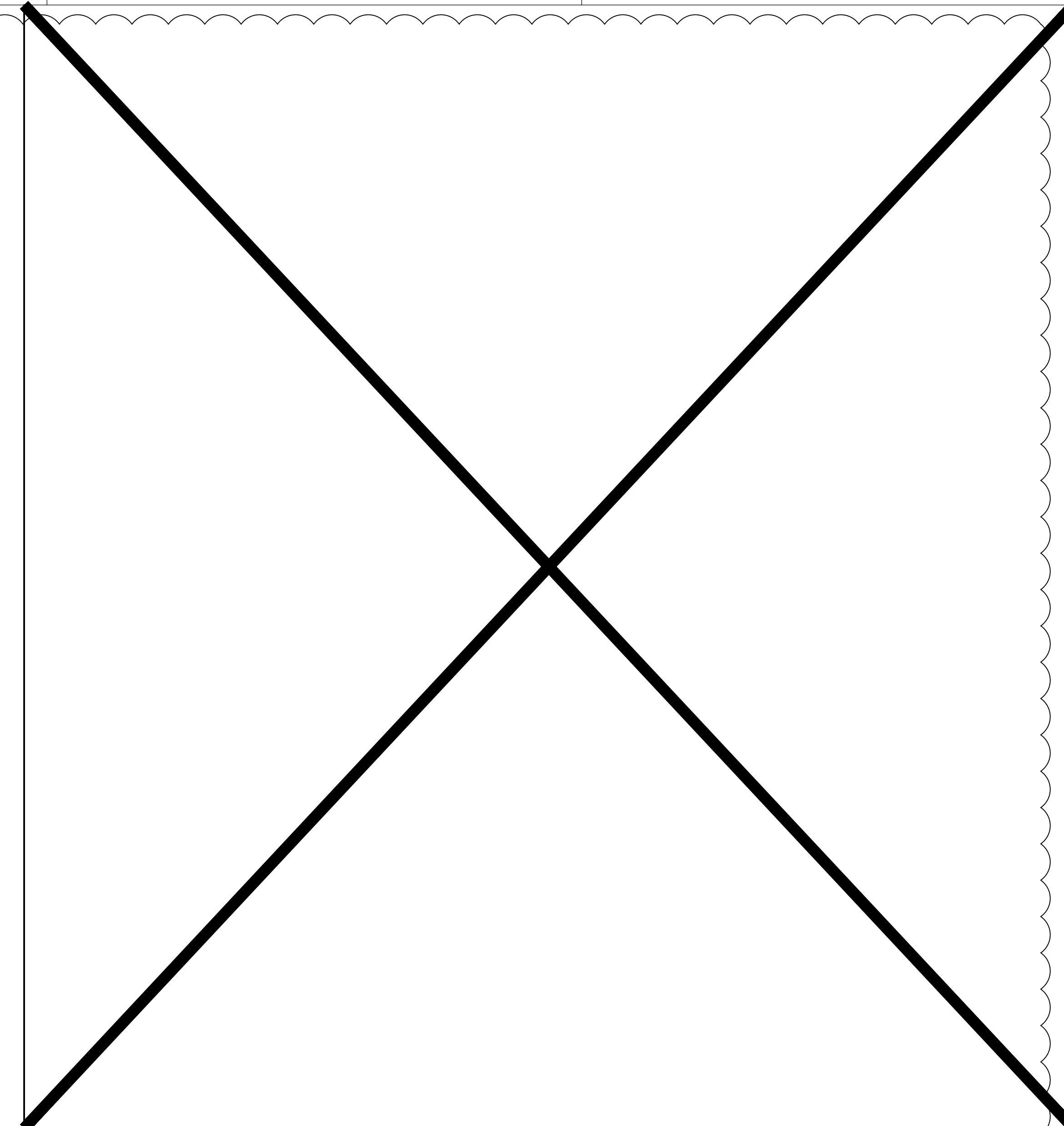
A1 ENLARGED SITE PLAN
 SCALE: 1" = 10'-0"

A100.1.A

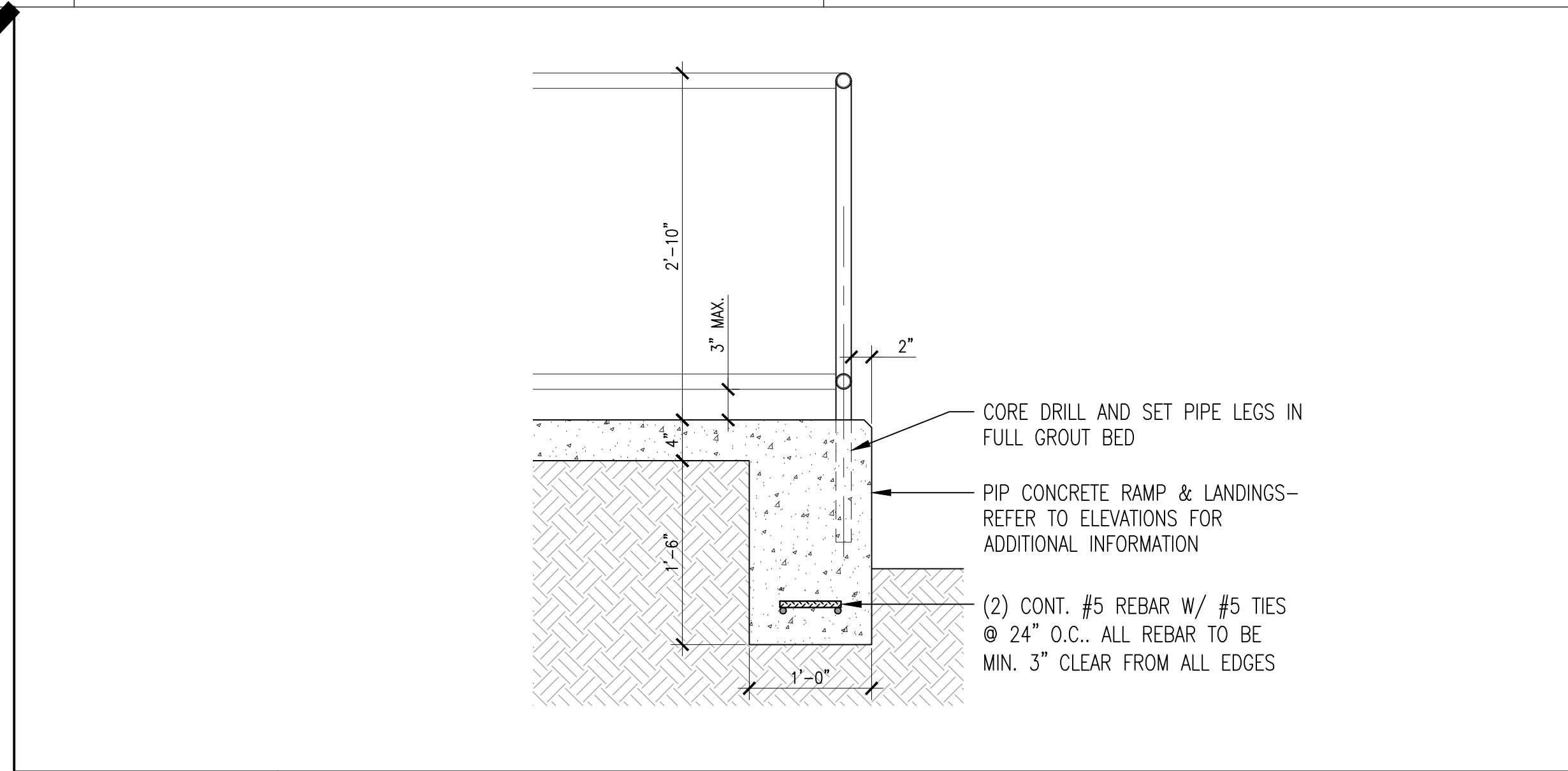
22019 100% CONSTRUCTION DOCUMENTS
 PLOT DATE: 3/27/2026 10:33:29 AM
 DWG. LOCATION: C:\PC\Harrison\Projects\22019 Palm Bay Charter Schools\22019 Palm Bay Charter Schools\A100.2A Site Plan.dwg
 © 2021 DAG ARCHITECTS, INC. ALL RIGHTS RESERVED. NO PART OF THIS DOCUMENT MAY BE COPIED, REPRODUCED OR TRANSMITTED IN ANY MANNER WITHOUT THE WRITTEN PERMISSION OF DAG ARCHITECTS, INC. THESE DRAWINGS AND SPECIFICATIONS ARE THE PROPERTY AND COPYRIGHT OF DAG ARCHITECTS, INC. AND SHALL NOT BE USED ON ANY OTHER PROJECT OR LOCATION EXCEPT AS DESCRIBED ON THE DRAWINGS, WITHOUT THE PRIOR WRITTEN AGREEMENT OF DAG ARCHITECTS.



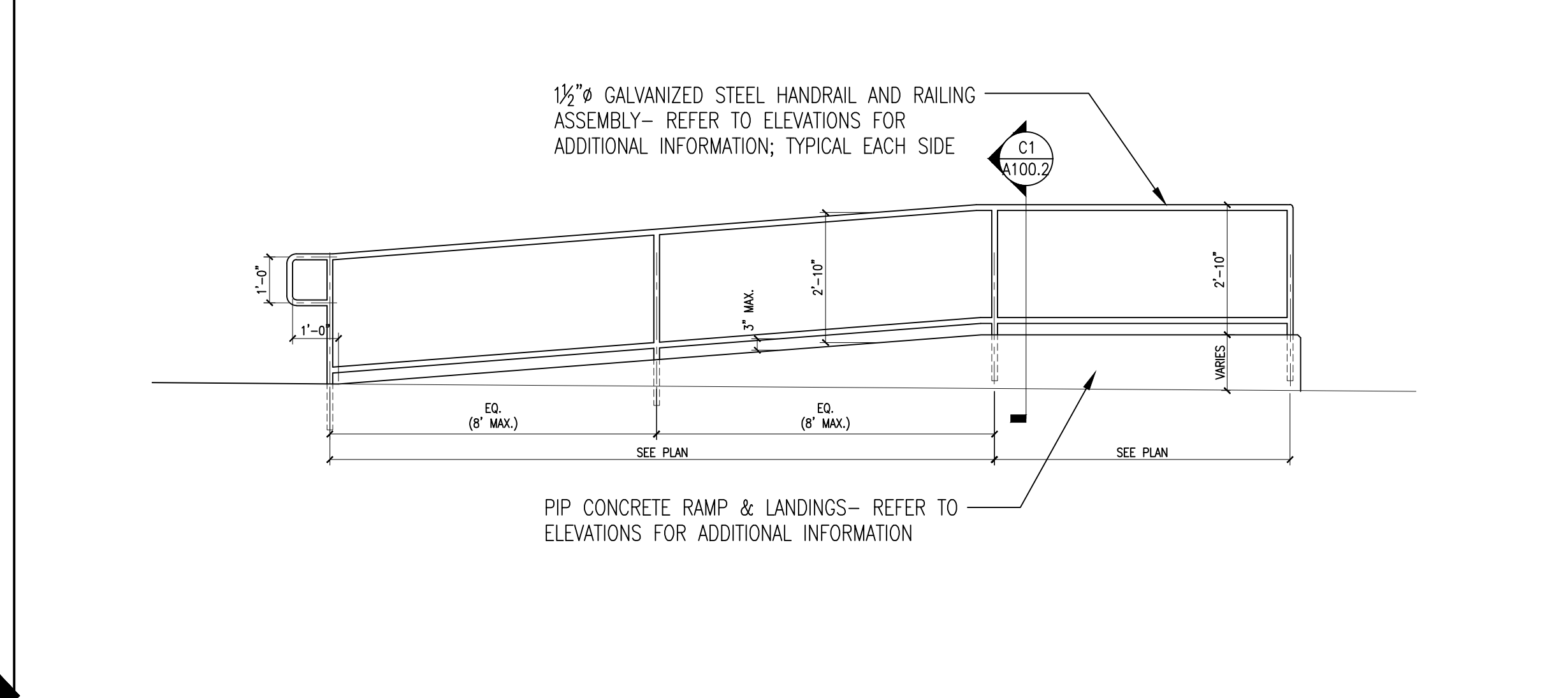
B1 RAMP PLAN
SCALE: 3/8" = 1'-0"
SOUTHWEST ENTRANCE - DOOR #100B



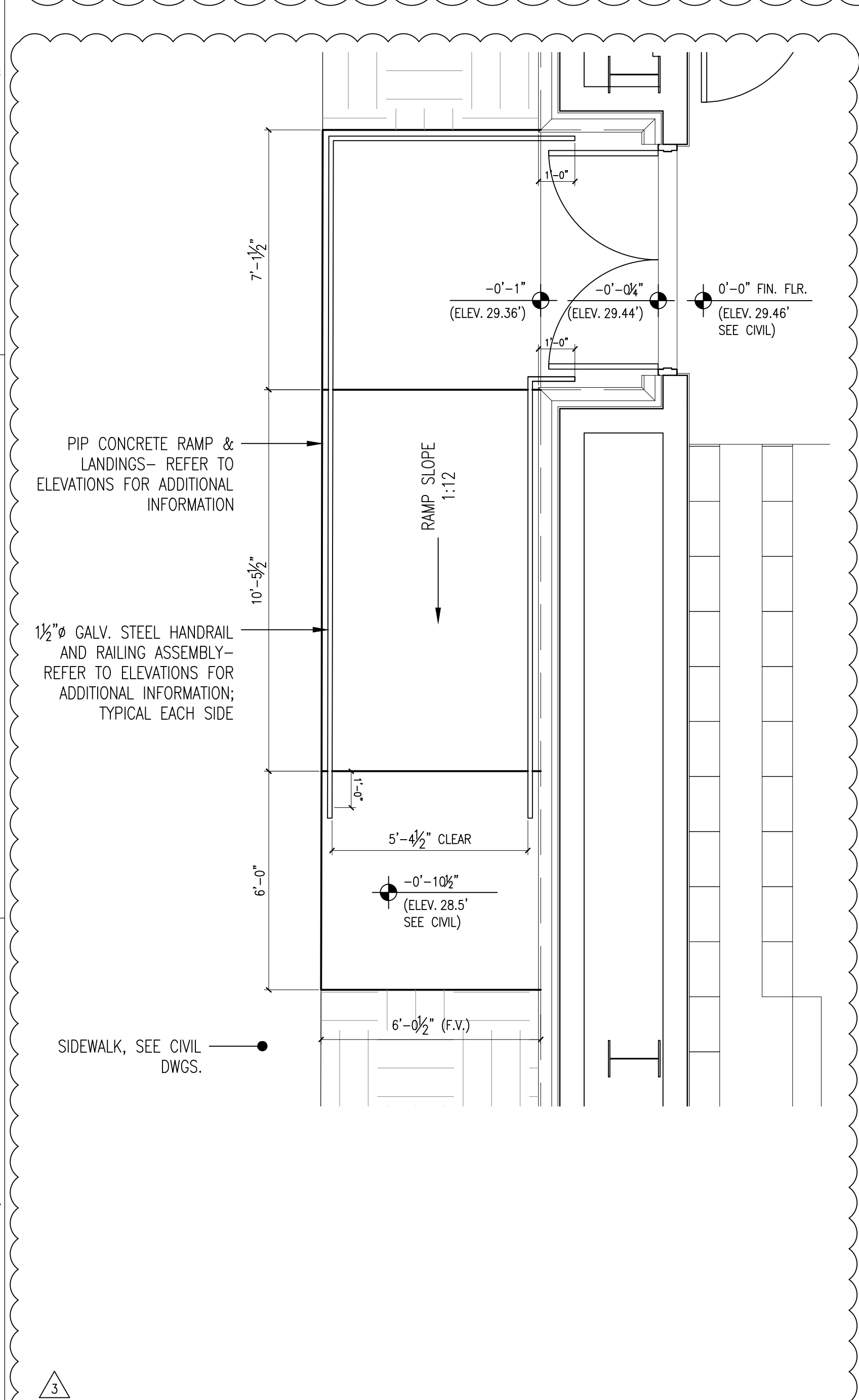
B2 DETAIL DELETED
SCALE:



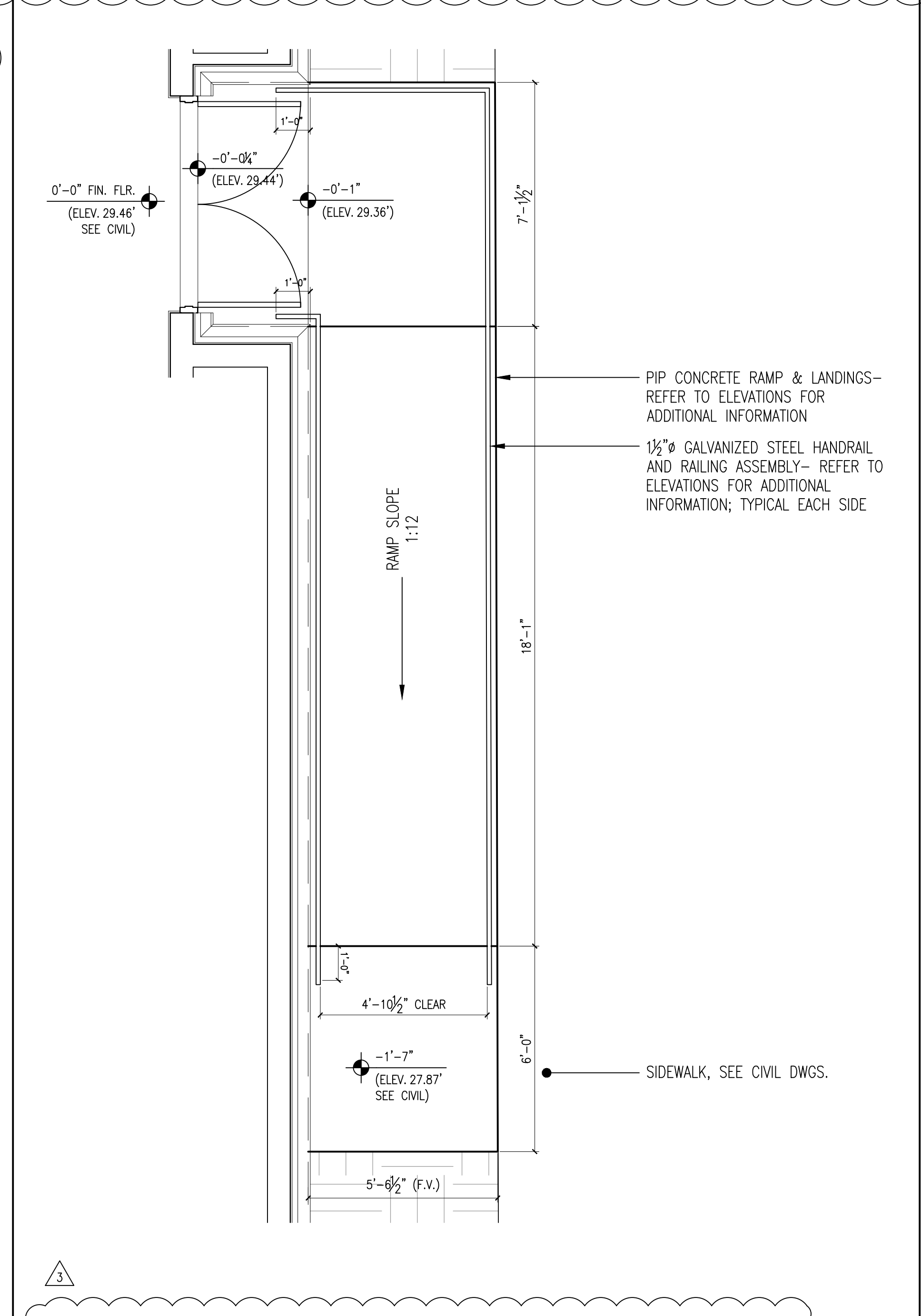
C1 TYPICAL HANDRAIL SECTION
SCALE: 1" = 1'-0"



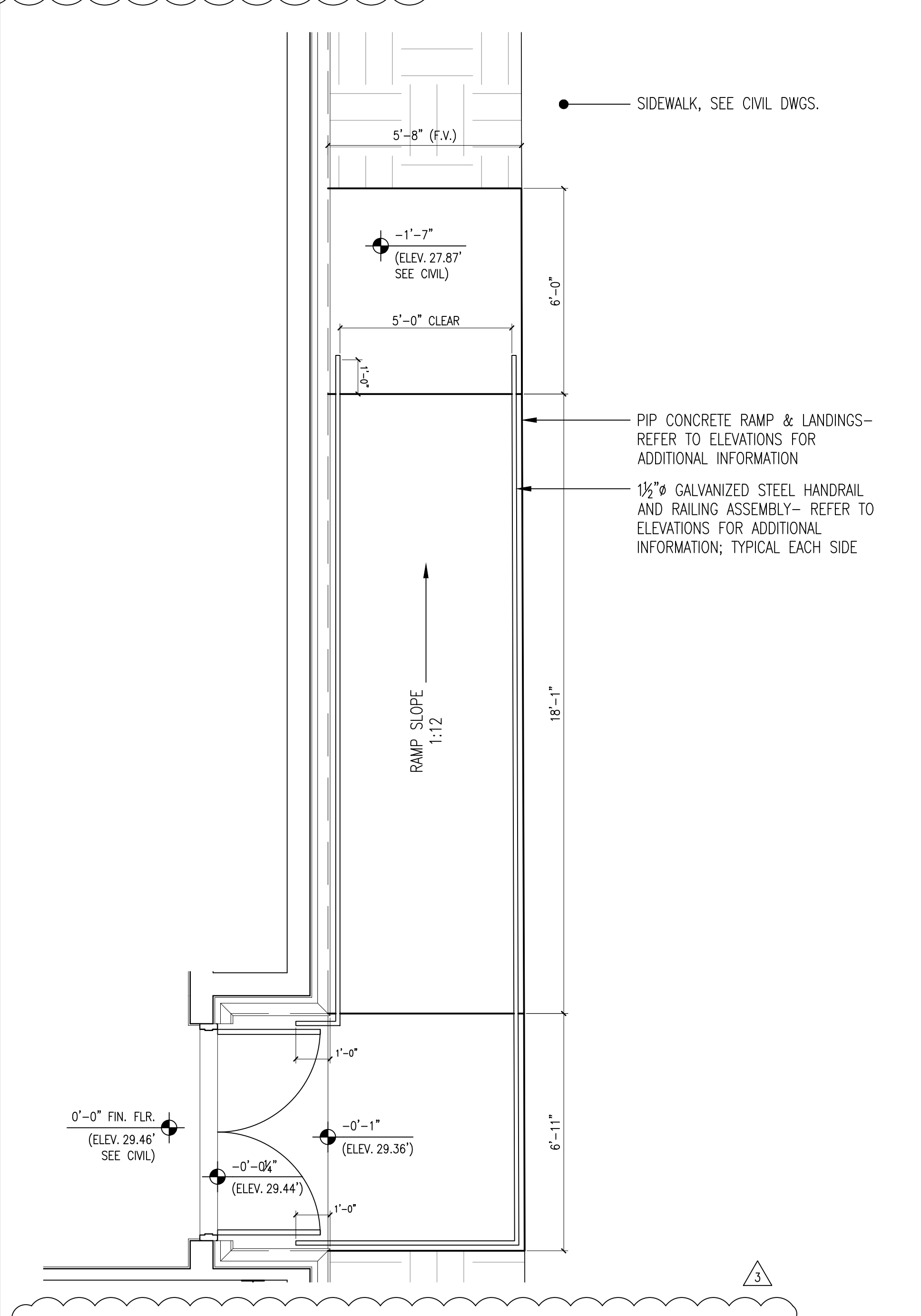
B3 TYPICAL RAMP ELEVATION
SCALE: 3/8" = 1'-0"



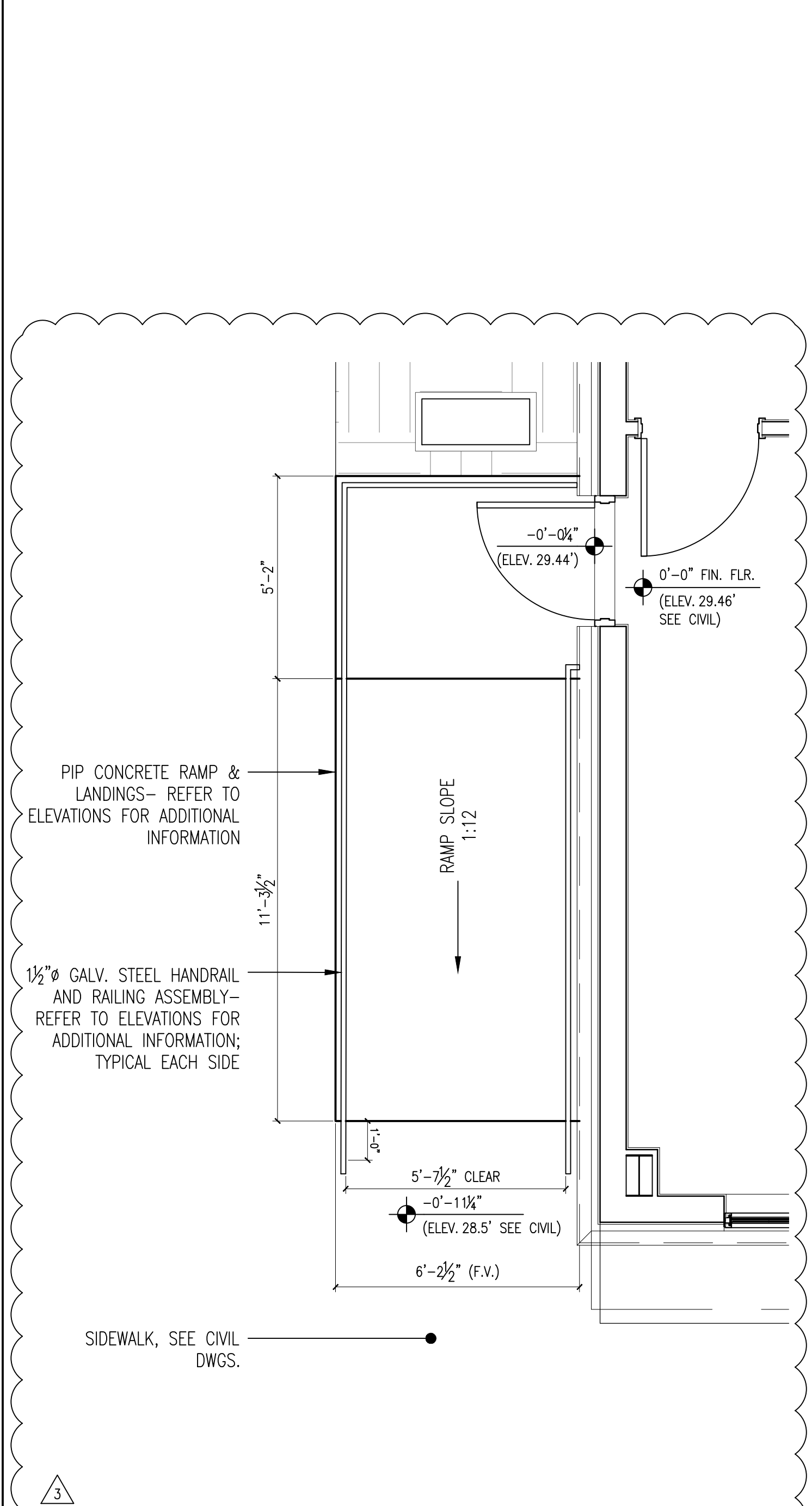
A1 RAMP PLAN
SCALE: 3/8" = 1'-0"
NORTHWEST ENTRANCE - DOOR #100D



A2 RAMP PLAN
SCALE: 3/8" = 1'-0"
NORTHEAST ENTRANCE - DOOR #100C



A3 RAMP PLAN
SCALE: 3/8" = 1'-0"
SOUTHEAST ENTRANCE - DOOR #100A



A4 RAMP PLAN
SCALE: 3/8" = 1'-0"
SOUTHWEST ENTRANCE - DOOR #107A

DAG

ARCHITECTS

DAG Architects AR000694
 455 Harrison Ave Suite 1 Panama City, FL 32401
 850.387.1671
 www.DAGarchitects.com

100% CONSTRUCTION DOCUMENTS

A New Gymnasium for:
PALM BAY CHARTER SCHOOLS
 1104 Balboa Avenue, Panama City, FL 32401

REVISIONS:

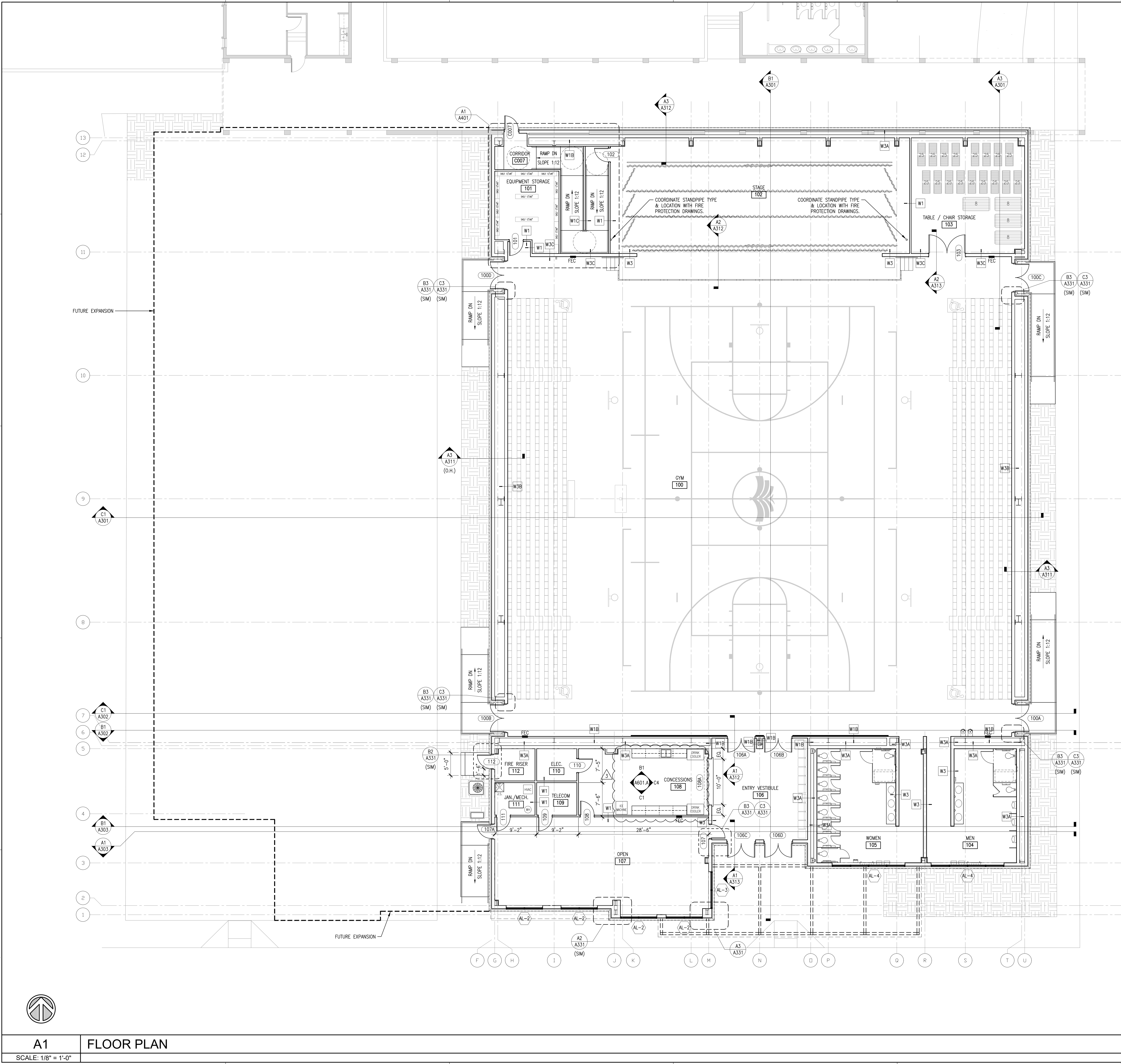
No.	Description	Date
3	ADDENDUM NO. 3	3/27/26

ALTERNATE SITE PLAN DETAILS

PROJECT NUMBER: **22019**
DATED: 01/31/2025

A100.2.A

22019 100% CONSTRUCTION DOCUMENTS 01/2025
 PLOT DATE: 3/27/2025 10:37:11 AM
 DWG. LOCATION: C:\PC\Harrison\Projects\22019 Palm Bay Gymnasium\Design\22019SchematicDesign\22019SchematicDesign\A101.1A First Floor Plan.dwg
 © 2021 DAG ARCHITECTS, INC. ALL RIGHTS RESERVED. NO PART OF THIS DOCUMENT MAY BE COPIED, REPRODUCED OR TRANSMITTED IN ANY MANNER WITHOUT THE WRITTEN PERMISSION OF DAG ARCHITECTS, INC. THESE DRAWINGS AND SPECIFICATIONS ARE THE PROPERTY AND COPYRIGHT OF DAG ARCHITECTS, INC. AND SHALL NOT BE USED ON ANY OTHER PROJECT OR LOCATION EXCEPT AS DESCRIBED ON THE DRAWINGS, WITHOUT THE PRIOR WRITTEN AGREEMENT OF DAG ARCHITECTS.



GENERAL NOTES

1. ALL CONTRACTORS MUST FIELD VERIFY ALL EXISTING CONDITIONS PRIOR TO PERFORMING NEW WORK.
2. THE CONTRACTOR SHALL PROVIDE REINFORCING WITH MATERIALS CONSISTENT WITH CONSTRUCTION MATERIALS BEHIND WALL MOUNTED AND CEILING MOUNTED EQUIPMENT. COORDINATE WITH A/V, DATA, CASEWORK, FURNITURE, ELECTRICAL, AND INTERIOR ELEVATION DRAWINGS.
3. CONTRACTOR SHALL COORDINATE WORK WITH MECHANICAL, PLUMBING, AND ALL OTHER DISCIPLINES.
4. INTERIOR DOORS TO BE LOCATED MIN 4" FROM ADJACENT STUD PARTITIONS AND 8" FROM ADJACENT MASONRY PARTITIONS, UNLESS DIMENSIONED OR NOTED OTHERWISE.
5. REFER TO FINISH SCHEDULE(S) IN A500 SERIES SHEETS FOR FINISHES.
6. REFER TO A500 SERIES SHEETS FOR ADDITIONAL INFORMATION, INCLUDING TOILET ROOM DIMENSIONS.
7. REFER TO LS-SERIES LIFE SAFETY SHEETS FOR FIRE RATED AND SMOKE PARTITION LOCATIONS.
8. REFER TO STRUCTURAL FOR BRACING TYPE AND LOCATIONS.
9. REFER TO PLUMBING FOR FIXTURE SCHEDULES.
10. CONTRACTOR SHALL PROVIDE ISOLATION BETWEEN DISSIMILAR METALS.
11. PROVIDE CONCRETE SPLASH BLOCKS / METAL SPLASH PANS AT ALL DOWNSPOUTS THAT DRAIN TO ROOFS OR GRADE, AND AT ALL CANOPY COLUMNS THAT DRAIN TO GRADE.

PEMB BID WARNING TO CONTRACTOR:

WITH THE SUBMISSION OF THEIR BID, THE GENERAL CONTRACTOR CERTIFIES AND HAS CONFIRMED THAT THE PRE-ENGINEERED METAL BUILDING COMPANY WHOSE PRICE WAS USED TO GENERATE THIS BID HAS THOROUGHLY REVIEWED THE REQUIREMENTS OF THE CURRENT ARCHITECTURAL AND STRUCTURAL PLANS. THE BID PRICING REFLECTS THEIR ABILITY TO PROVIDE A PRE-ENGINEERED METAL BUILDING PACKAGE THAT COMPLIES WITH THE REQUIREMENTS OF THE CONTRACT DRAWINGS TO THE ARCHITECT'S SATISFACTION. THE BIDDING CONTRACTOR FURTHER UNDERSTANDS AND ACKNOWLEDGES THAT THEY HAVE INCLUDED WITHIN THEIR BID PRICE ALL COSTS FOR ALL INITIAL OR SUPPLEMENTAL DESIGN ENGINEERING FROM THE PEMB PROVIDER TO ENSURE THAT THE APPROVED DESIGN TO BE RELEASED FOR FABRICATION COMPLIES WITH THE INTENT OF THE CONTRACT DRAWINGS. THIS INCLUDES COLUMN LOCATIONS AND SPACING, BEAM CLEAR HEIGHTS AND SPANS, AS WELL AS WINDOWS, DOORS, AND STOREFRONT OPENING REQUIREMENTS. THE COST OF ANY STEEL MATERIAL REQUIRED TO COMPLY WITH THESE ARCHITECTURAL REQUIREMENTS IS INCLUDED IN THIS BID. ADDITIONALLY, THE PEMB PROVIDER HAS INCLUDED SUITABLE DESIGN AND SUPPLEMENTAL STEEL BRACING WITHIN THE GYM ROOF FRAMING TO SUPPORT THE SIX RETRACTING BASKETBALL BACKSTOP ASSEMBLIES.

DAG

ARCHITECTS

DAG Architects AR000694
 455 Harrison Ave Suite 1 Panama City, FL 32401
 850.387.1671
 www.DAGarchitects.com

100% CONSTRUCTION DOCUMENTS

A New Gymnasium for:
PALM BAY CHARTER SCHOOLS
 1104 Balboa Avenue, Panama City, FL 32401

REVISIONS:

No.	Description	Date
1	SCOPE REDUCTION	2/6/2026
2	ADDENDUM NO. 2	3/17/26
3	ADDENDUM NO. 3	3/27/26

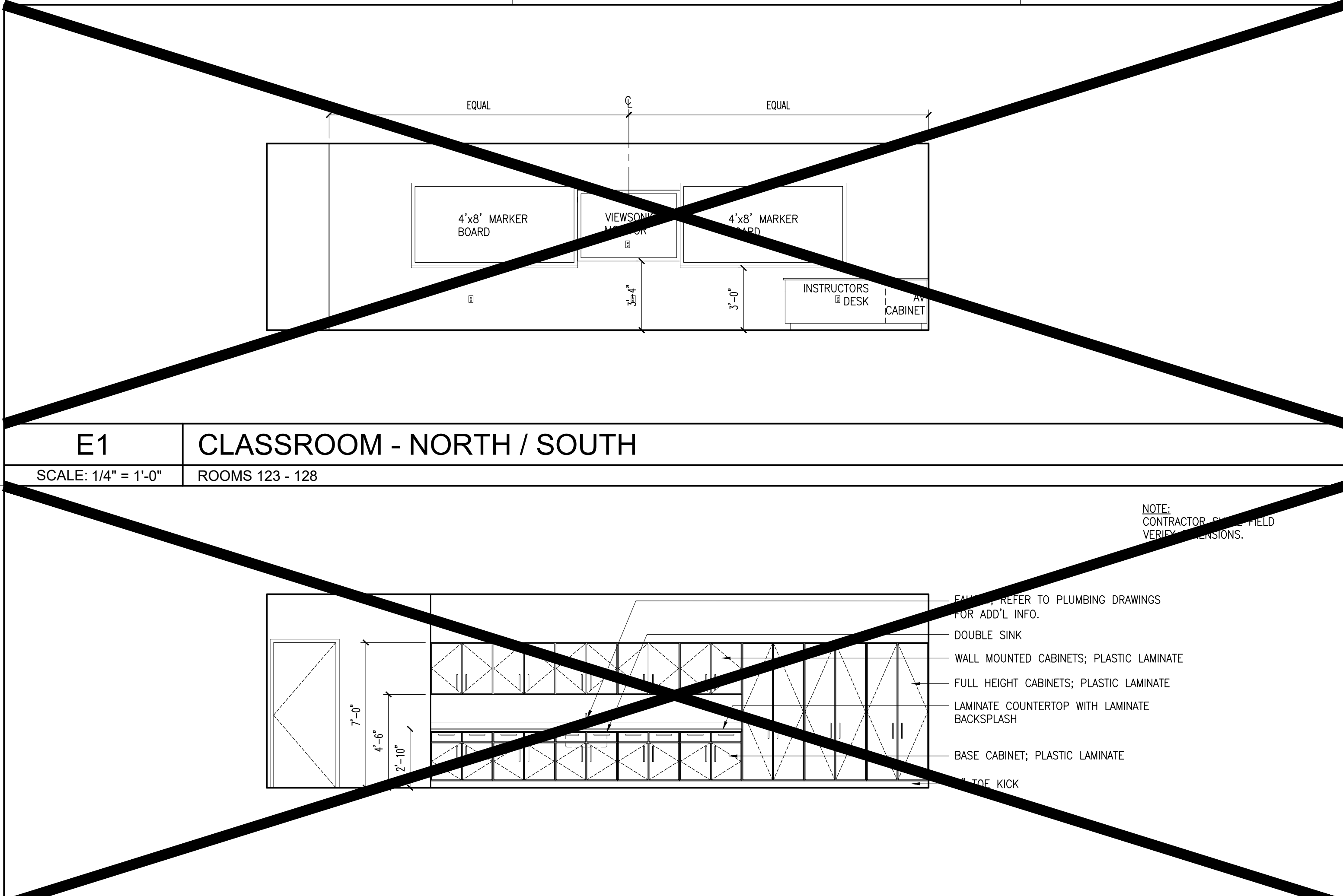
ALTERNATE FLOOR PLAN

PROJECT NUMBER: **22019**
 DATED: 01/31/2025

A1 FLOOR PLAN
 SCALE: 1/8" = 1'-0"

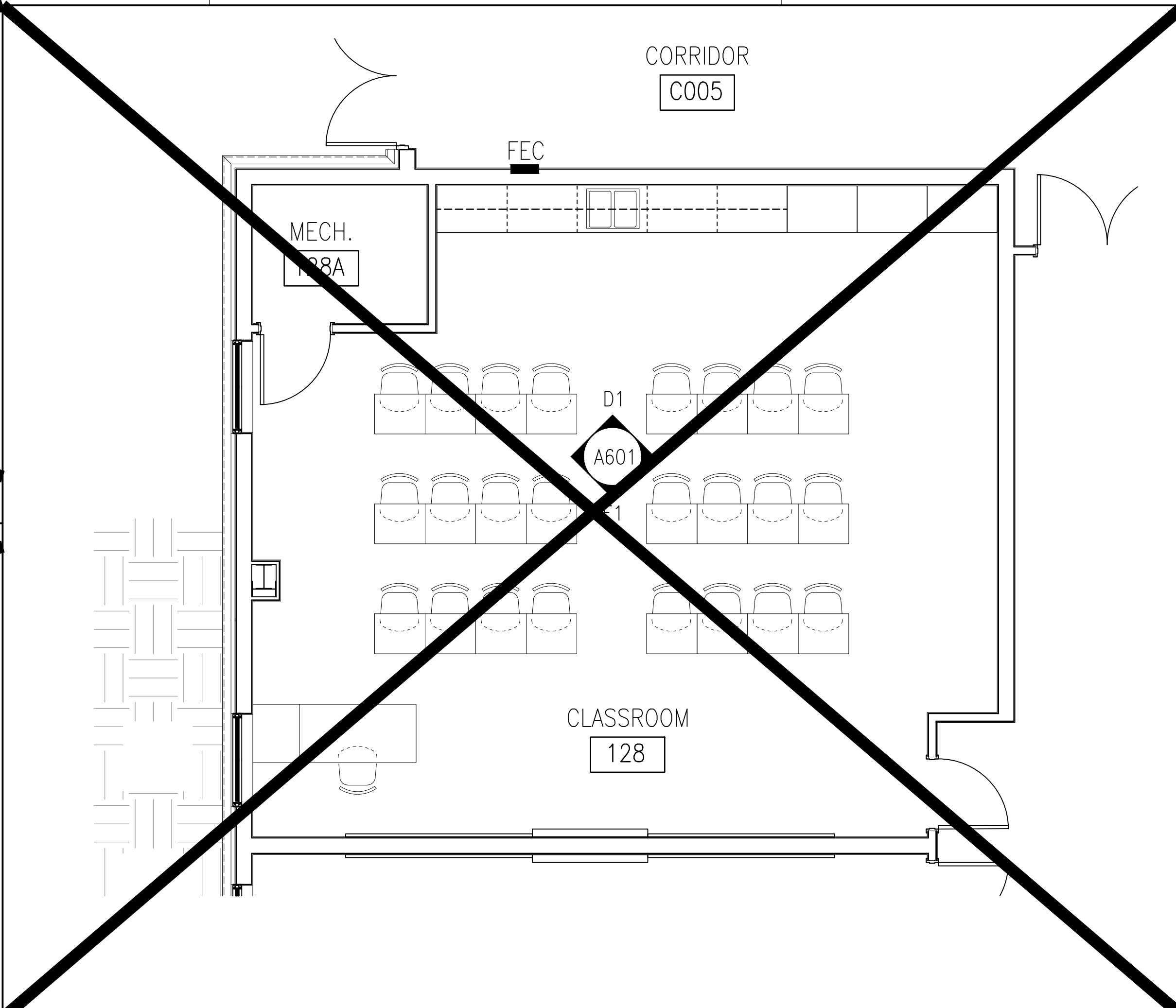
A101.A

22019 100% CONSTRUCTION DOCUMENTS
 PLOT DATE: 3/27/2025 8:48:54 AM
 DWG. LOCATION: C:\PC\Harrison\Projects\2025\Palmbay\Gymnasium\Design\25\25\InteriorElevations\A601.1A Interior Elevations.dwg
 © 2025 DAG ARCHITECTS, INC. ALL RIGHTS RESERVED. NO PART OF THIS DOCUMENT MAY BE COPIED, REPRODUCED OR TRANSMITTED IN ANY MANNER WITHOUT THE WRITTEN PERMISSION OF DAG ARCHITECTS, INC. THESE DRAWINGS AND SPECIFICATIONS ARE THE PROPERTY AND COPYRIGHT OF DAG ARCHITECTS, INC. AND SHALL NOT BE USED ON ANY OTHER PROJECT OR LOCATION EXCEPT AS DESCRIBED ON THE DRAWINGS, WITHOUT THE PRIOR WRITTEN AGREEMENT OF DAG ARCHITECTS.

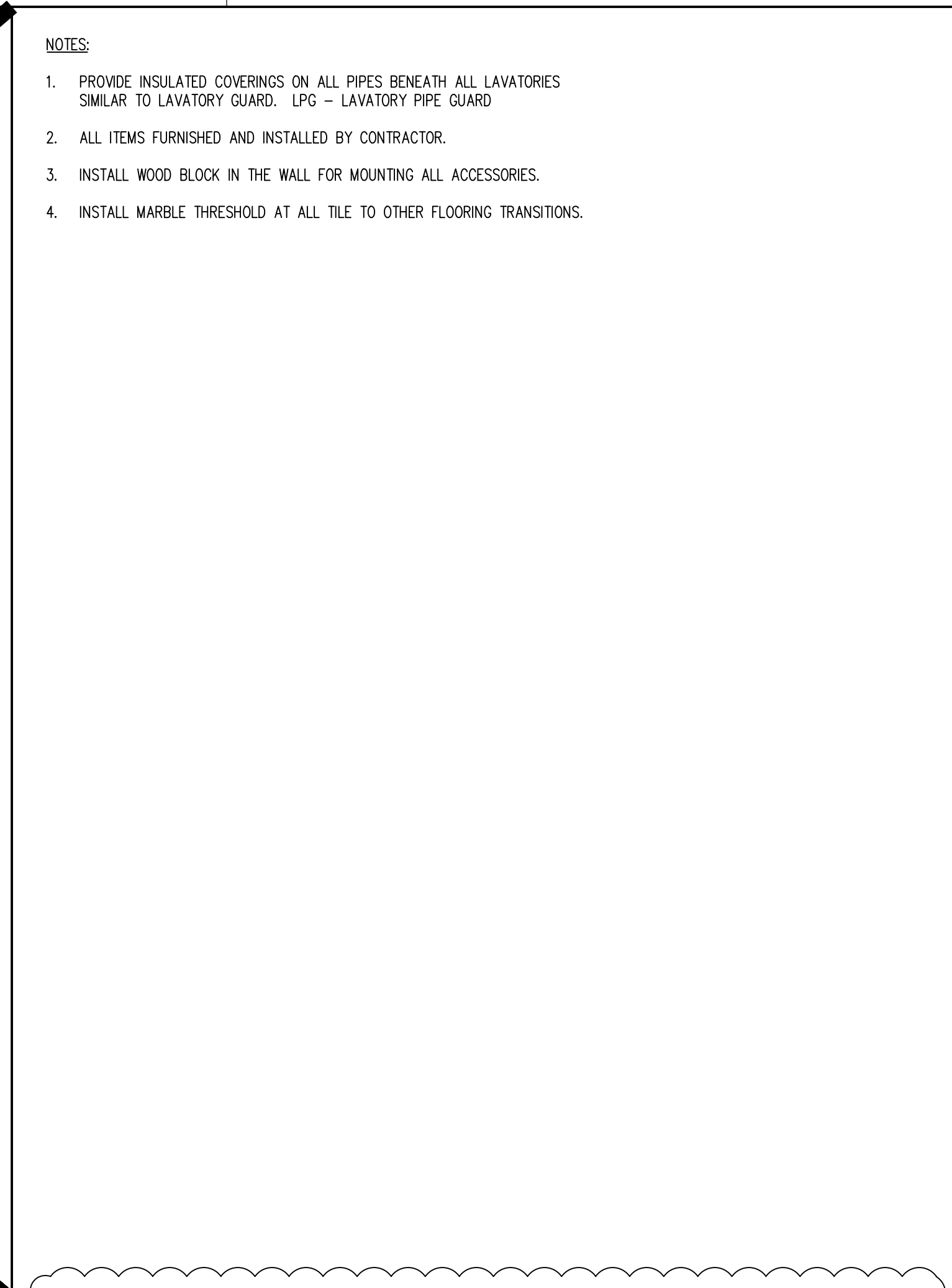


E1 CLASSROOM - NORTH / SOUTH
SCALE: 1/4" = 1'-0" ROOMS 123 - 128

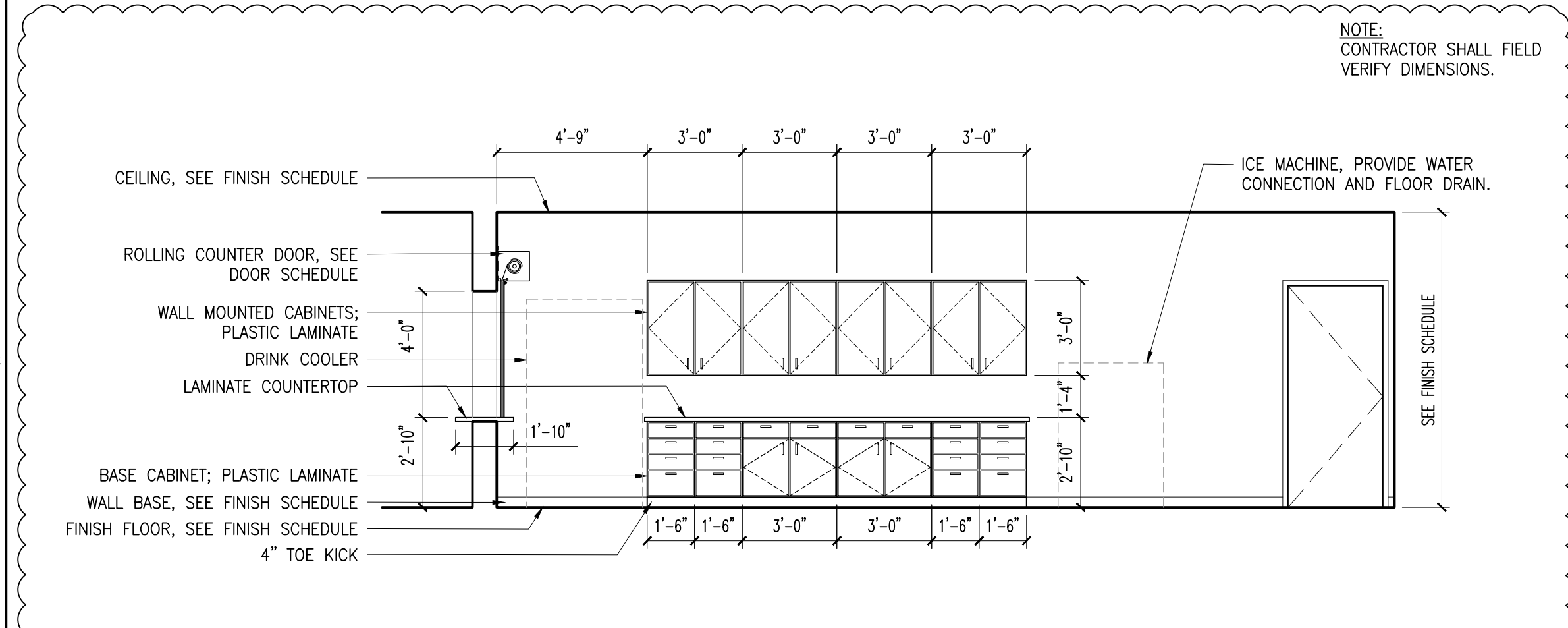
D1 CLASSROOM - NORTH / SOUTH
SCALE: 1/4" = 1'-0" ROOMS 123 - 128



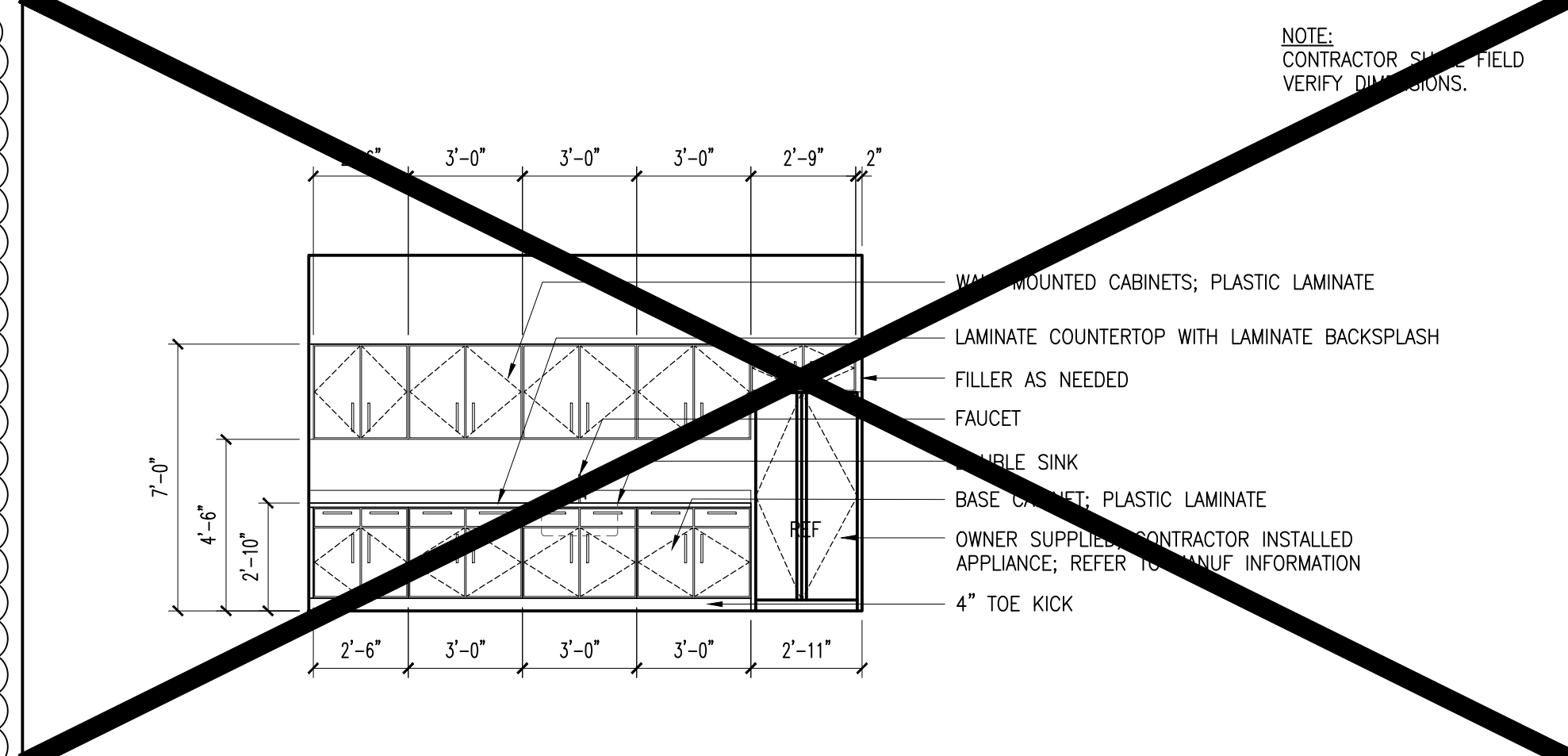
D2 GENERAL CLASSROOM PLAN
SCALE: 1/4" = 1'-0" ROOMS 123 - 128



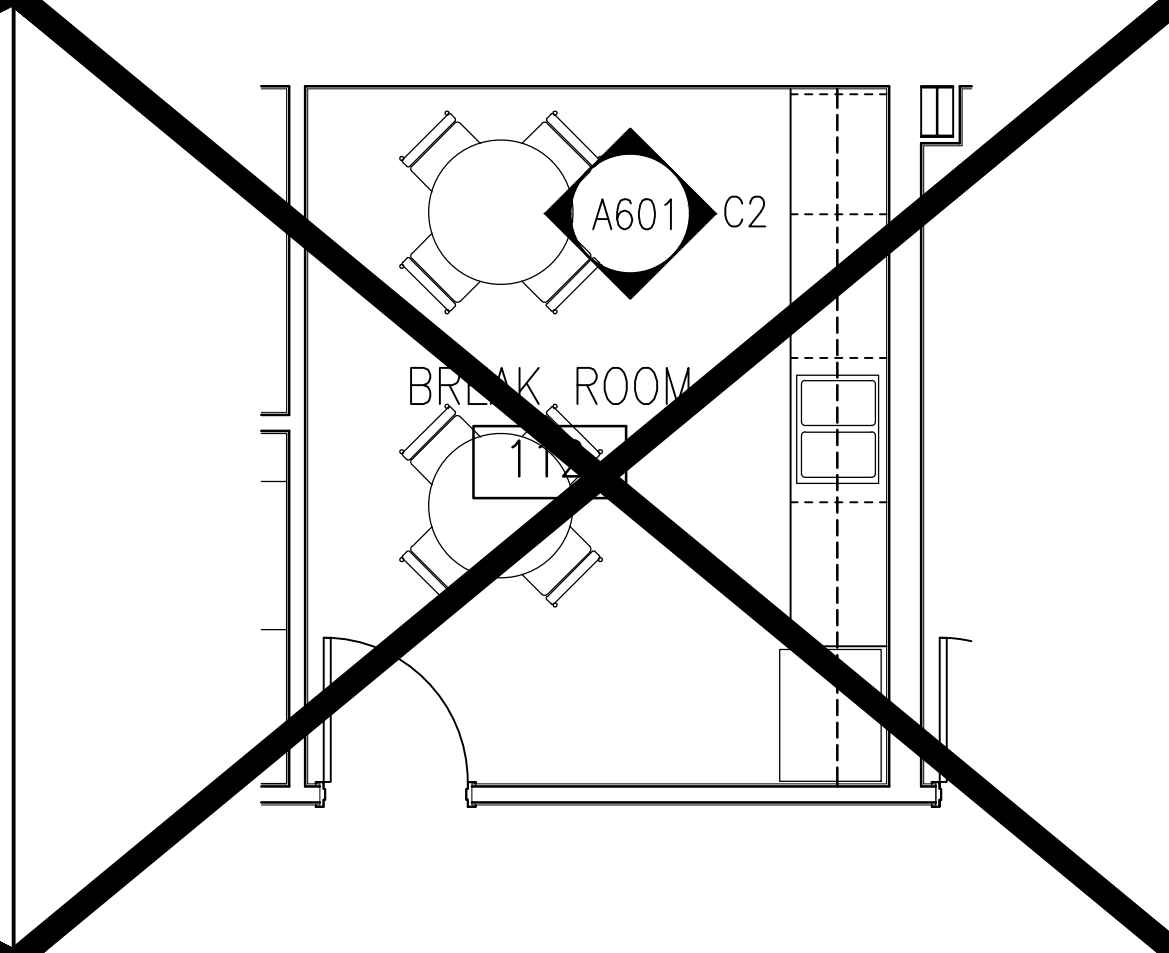
D4 NOTES
SCALE: NTS



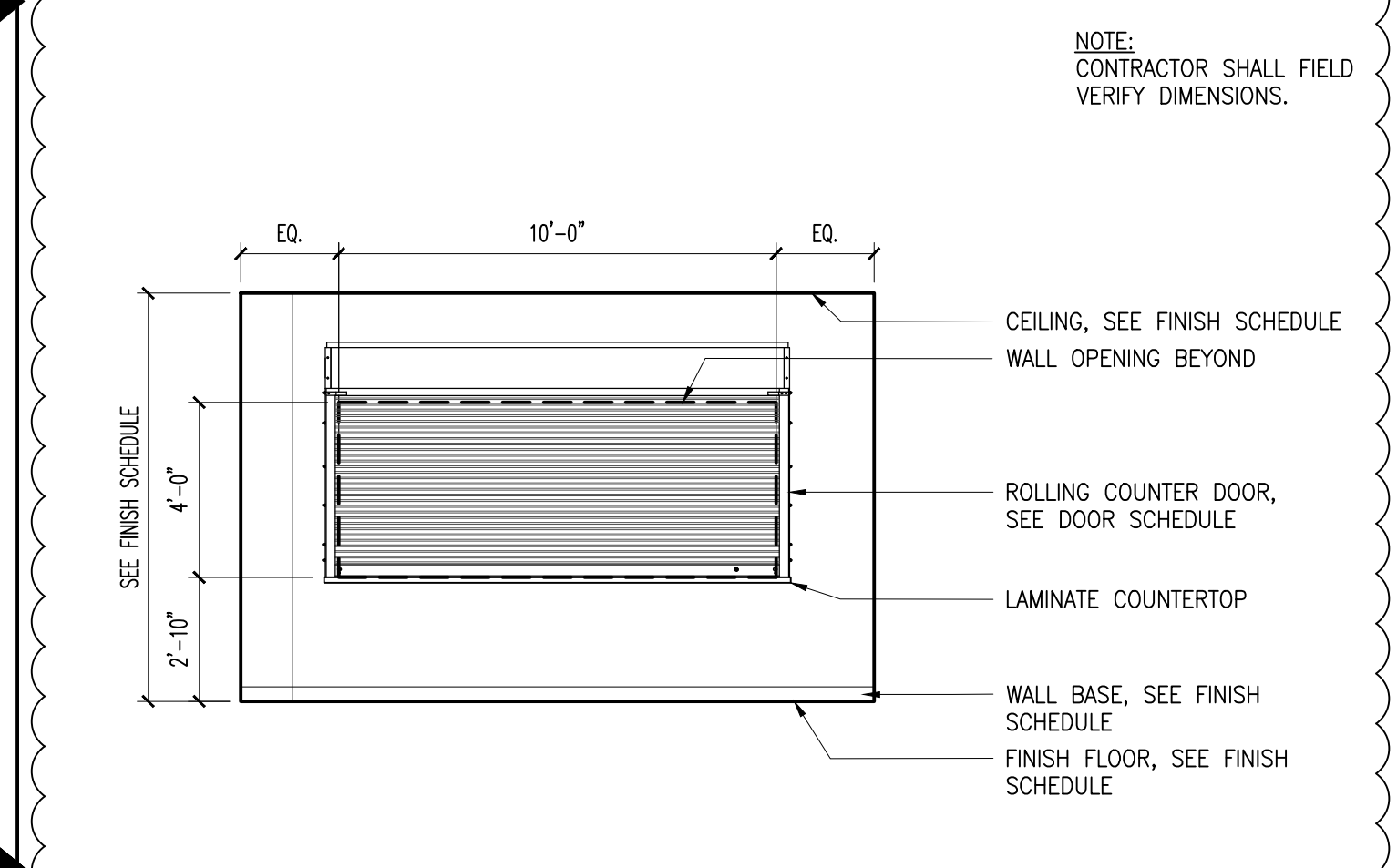
C1 CONCESSIONS - EAST
SCALE: NTS ROOM 108



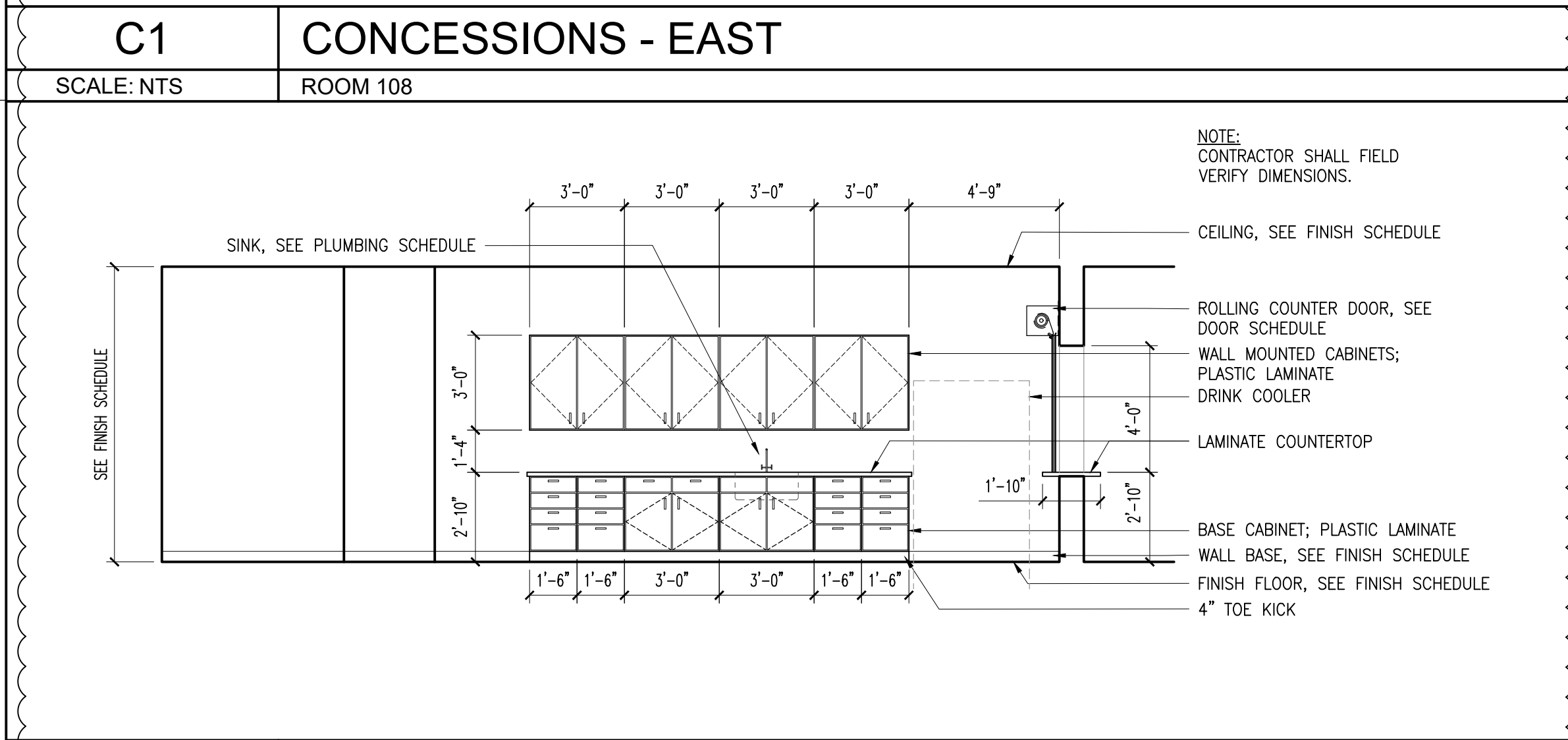
C2 BREAK ROOM - EAST
SCALE: 1/4" = 1'-0" ROOM 112



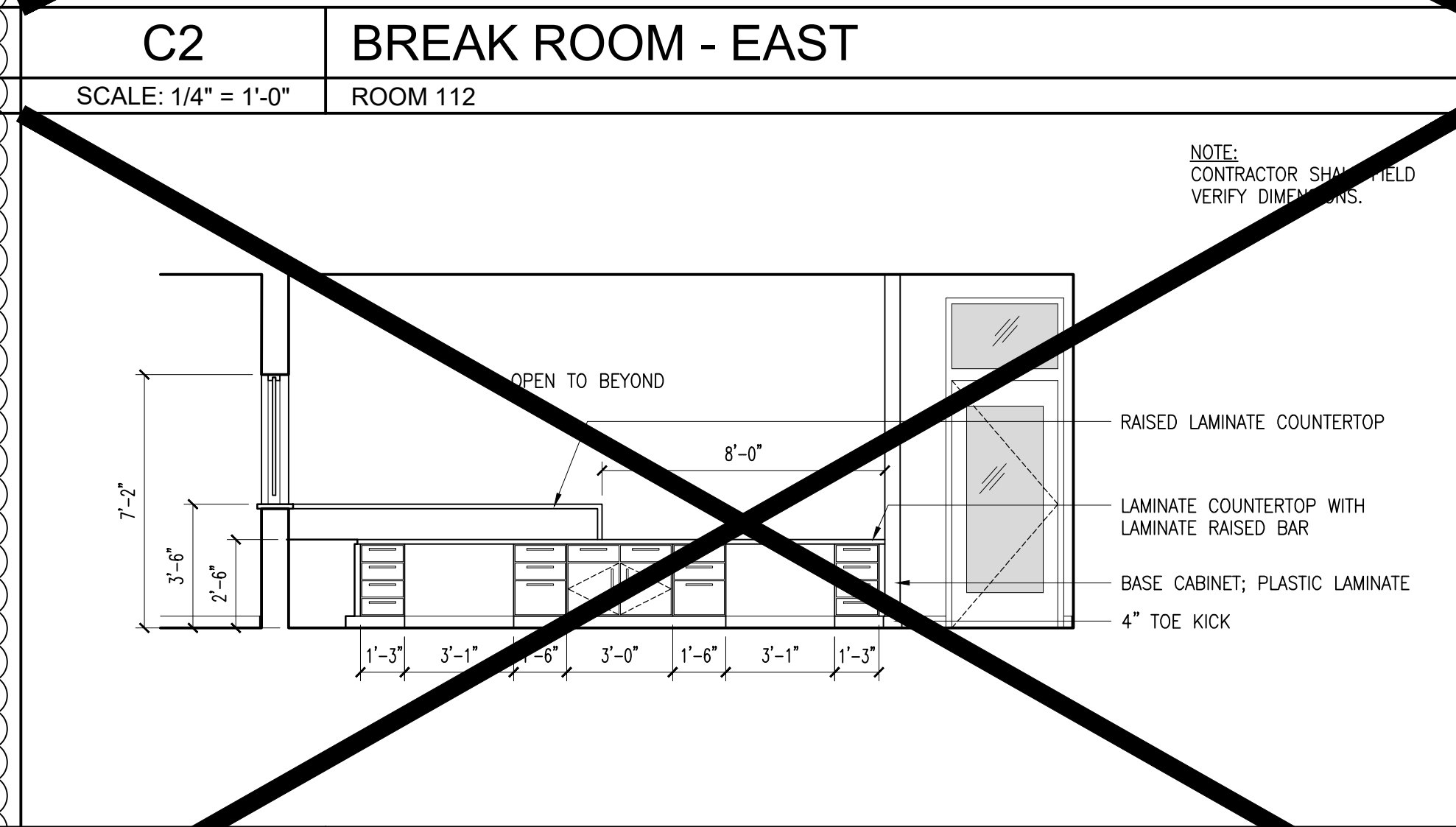
C3 BREAK ROOM PLAN
SCALE: 1/4" = 1'-0" ROOM 112



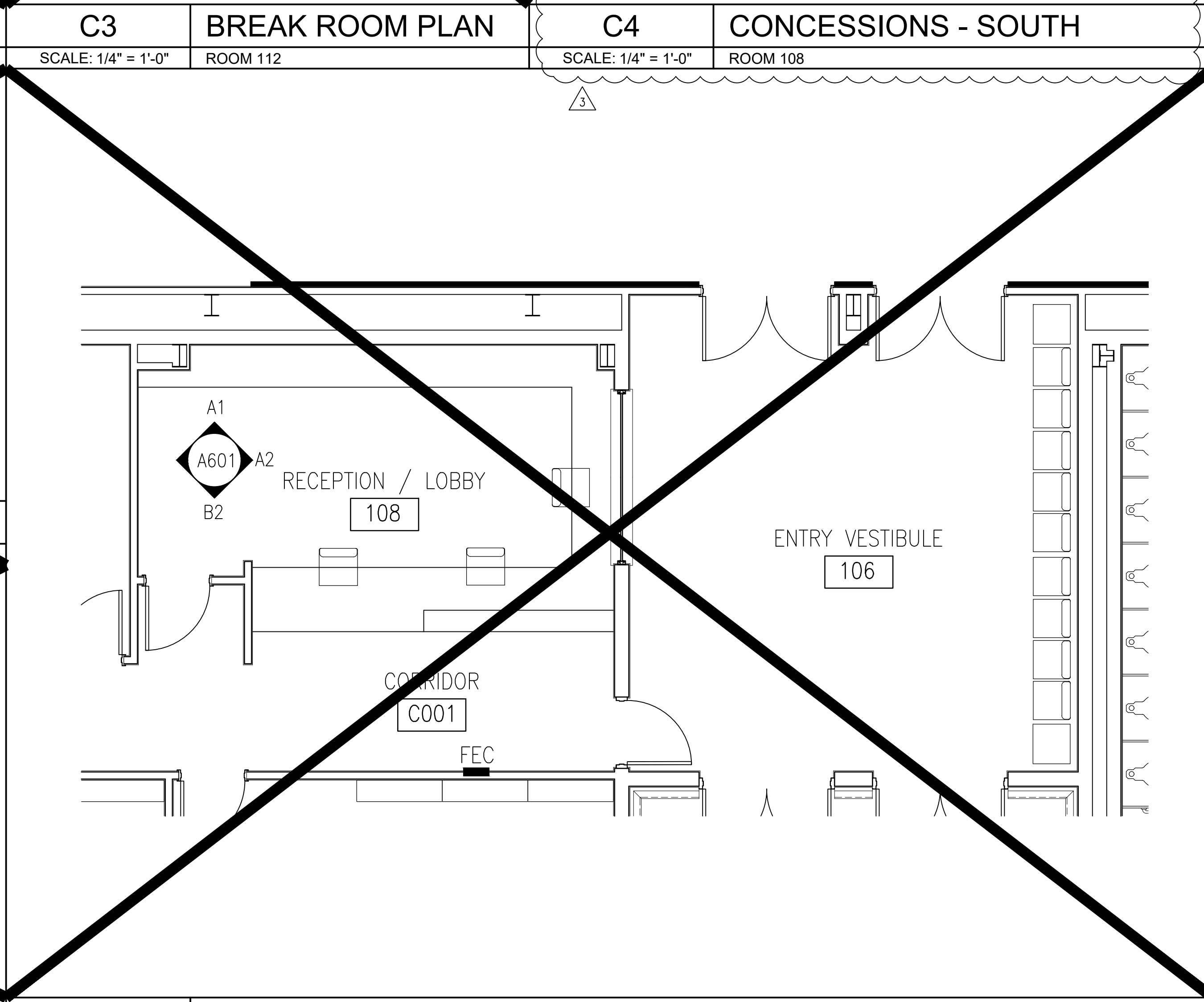
C4 CONCESSIONS - SOUTH
SCALE: 1/4" = 1'-0" ROOM 108



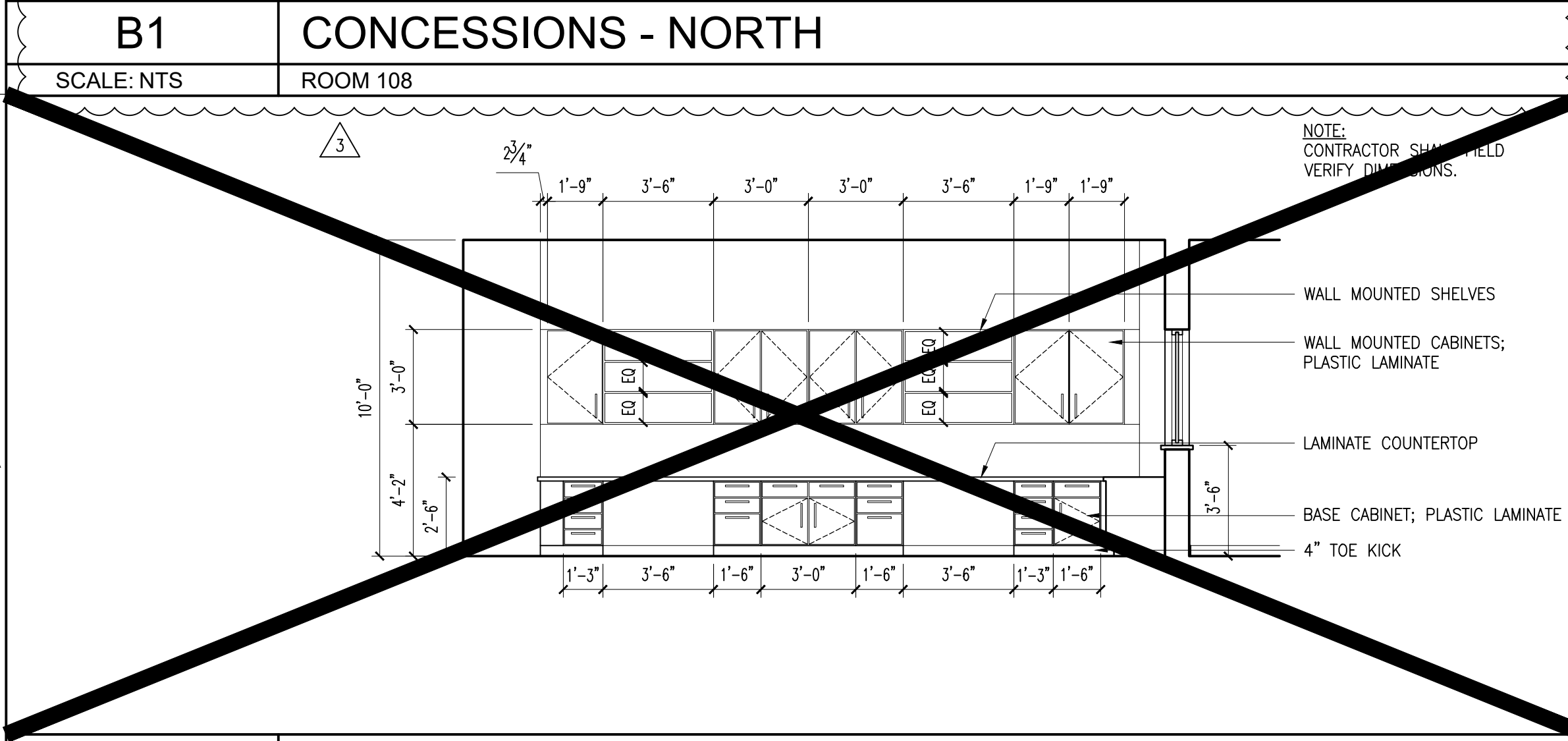
B1 CONCESSIONS - NORTH
SCALE: NTS ROOM 108



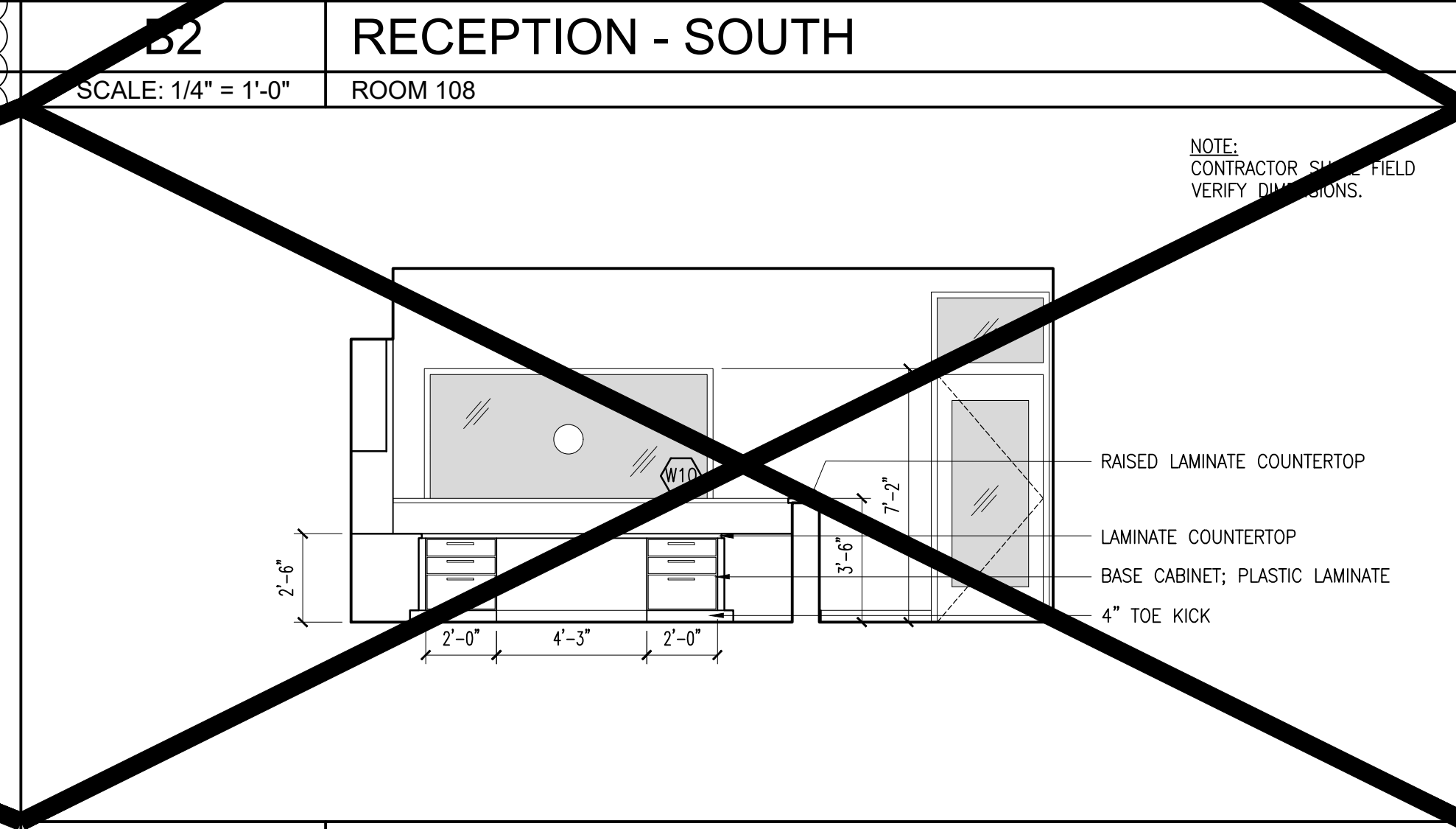
B2 RECEPTION - SOUTH
SCALE: 1/4" = 1'-0" ROOM 108



A3 RECEPTION / LOBBY PLAN
SCALE: 1/4" = 1'-0" ROOM 108



A1 RECEPTION - NORTH
SCALE: 1/4" = 1'-0" ROOM 108



A2 RECEPTION - EAST
SCALE: 1/4" = 1'-0" ROOM 108

DAG ARCHITECTS
 DAG Architects AR0009694
 455 Harrison Ave Suite 1 Panama City, FL 32401
 850.387.1671
 www.DAGarchitects.com

100% CONSTRUCTION DOCUMENTS

A New Gymnasium for:
PALM BAY CHARTER SCHOOLS
 1104 Balboa Avenue, Panama City, FL 32401

REVISIONS:

No.	Description	Date
2	ADDENDUM NO. 2	3/17/26
3	ADDENDUM NO. 3	3/27/26

ALTERNATE INTERIOR ELEVATIONS

PROJECT NUMBER: 22019
 DATED: 01/31/2025

A601.A

Free shipping on qualifying orders over \$500 (Just sign in!)

Manitowoc Ice IDP0450A/D570 483 lb Indigo NXT™ Full Cube Ice Machine w/ Bin - 532 lb Storage, Air Cooled, 115v

★★★★★ KaTom #: 399-IDT0450AD570 • MPN: IDP0450A-161/D570



QUICK SHIP: Ships in 1 Business Day



Earn up to **\$170.85** back with a
[KaTom MasterCard® Rewards Credit Card](#)

Selected Compressor Type: ***Air Cooled***

 Air Cooled

 Water Cooled

Selected Ice Type: **Full Cube**



Price Match Guarantee

Found a better price elsewhere? [Let us know!](#)



Ask a Foodservice Equipment Specialist

[\(844\) 614-1656](#) [Chat](#)

[What is a Foodservice Equipment Specialist?](#)

Manitowoc Ice IDP0450A/D570 Description

The Manitowoc IDP0450A/D-570 Indigo NXT™ ice machine with bin is ideal for establishments that serve iced drinks, cocktails, and other beverages. Its air-cooled head produces as much as 483 pounds of ice every 24 hours, and a probe ensures the ice reaches proper thickness before it falls in the bin. The Manitowoc IDP0450A/D-570 ice maker's bin can hold 532 pounds of ice and is insulated to block warm air. A scoop with a knuckle and thumb guard is included to help protect ice from contaminants.

Product Details

- 483-lb. ice production capacity
- 393-lb. AHRI-certified production capacity
- Icon-based easyTouch® display control panel
- Programmable ice production measured by timer or volume
- Quick-cleaning foodzone features removable parts
- Built-in AlphaSan antimicrobial agent slows bacteria growth in the foodzone
- Acoustical ice probe ensures ice is the correct thickness before dropping
- 24-hr. preventive maintenance diagnostics
- DuraTech exterior resists corrosion
- Air-cooled motor
- Uses R290 refrigerant
- Part of the Indigo NXT series
- Ambient air temperature range for operation: 40-110 degrees F
- Incoming water temperature range for operation: 40-90 degrees F
- 3,800-6,000 BTU
- 11.9 A, 5.63 kW
- 115 V/60 Hz/1 ph
- Ice cube dimensions: 0.875 in. x 0.875 in. x 0.875 in.
- Overall dimensions: 30 in. W x 34 in. D x 71.5 in. H

Ice Bin Details

**Image may not depict product color, inclusions or accessories.*

**Free shipping on Manitowoc Ice IDP0450A/D570 within the 48 contiguous states.*

Additional Product Information



Hardwired

Product does not come with plug and must be hardwired to operate



Founded in 1964, Manitowoc is a Pentair company specializing in creating advanced commercial ice machines. The Wisconsin company has pioneered several developments in the ice industry, such as the vertical evaporator, EasyTouch displays, and environmentally friendly refrigerant, and is recognized as one of the top ice machine brands.



Machine: 3-year Parts & Labor, 5-year Compressor Parts; Dispenser: 3-year Parts & Labor

Manitowoc Ice IDP0450A/D570 Specifications

Manufacturer	Manitowoc Ice
24 Hr. Production (lb)	470
Access	Lift Up Door
Also Known As	IDT0450A, IDT0450A-161
Bin Capacity (lb)	532
Compressor Type	Air Cooled
Depth (in)	34
Height (in)	71.5
Hertz	60
Ice Type	Full Cube
Phase	1
Product	Ice Machines with Bins
Product Type	Ice Makers & Bins
Rating	Best
Refrigerant	R410A
Series	Indigo NXT™
Suggested Use	Commercial
Voltage	115
Warranty	Machine: 3-year Parts & Labor, 5-year Compressor Parts; Dispenser: 3-year Parts & Labor
Water Inlet (in)	0.38
Width (in)	30
Weight	275.00



[Spec Sheet](#)



[Warranty](#)



[Service Manual](#)



[Parts Breakdown](#)



[Manual](#)



[Brochure](#)

Residential Users: The warranty will not be honored for residential or non-commercial use of any Commercial Equipment.

