

ADDENDUM NO. 4

To: Invited Bidders
Project: **St. Mary Fort Walton Beach Admin Building & Renovation**
Fort Walton Beach, Florida
Date: June 24, 2026 Bid Date: June 30, 2026
Architect: Quina Grundhoefer Architects

Bidder to acknowledge receipt of this Addendum by inserting its number and date in the Proposal Form. This Addendum forms a part of the Contract Documents and modifies them as follows:

I. Project Manual:

1. See Section 07272 – Fluid-Applied Air Barrier:

- a. Change Henry Air-Bloc 31 to Air-Bloc 17 as a basis of design for the liquid-applied air barrier membrane.

II. Drawings:

1. Clarification to Sheet C6:

- a. The existing pavers at the plaza for the Parish Life Center can be removed and replaced after the utility work is completed.

2. Clarification to Sheet A0.1:

- a. The tie in location for the new irrigation into the existing system is located just beyond the northwest corner of the Existing Cafeteria & Auditorium. – See attached drawing.
- b. There is currently no existing irrigation where the new building will be located.
- c. The new irrigation around the New Admin-Classroom Building will be a new irrigation zone.

3. Refer to Attached Sheet A2.1:

- a. Add Knox box above truss signage near front entry on 1/A2.1 South Elevation.

4. Refer to Attached Sheet A4.1:

- a. Add door elevation H to sheet A4.1.
- b. Change doors 17 & 27 from elevation B to H.

5. Clarification to Sheet A6.1:

- a. No hazardous material abatement work will be required for the admin-classroom renovation in Alternate #1.

6. Clarification to Electrical Sheets:

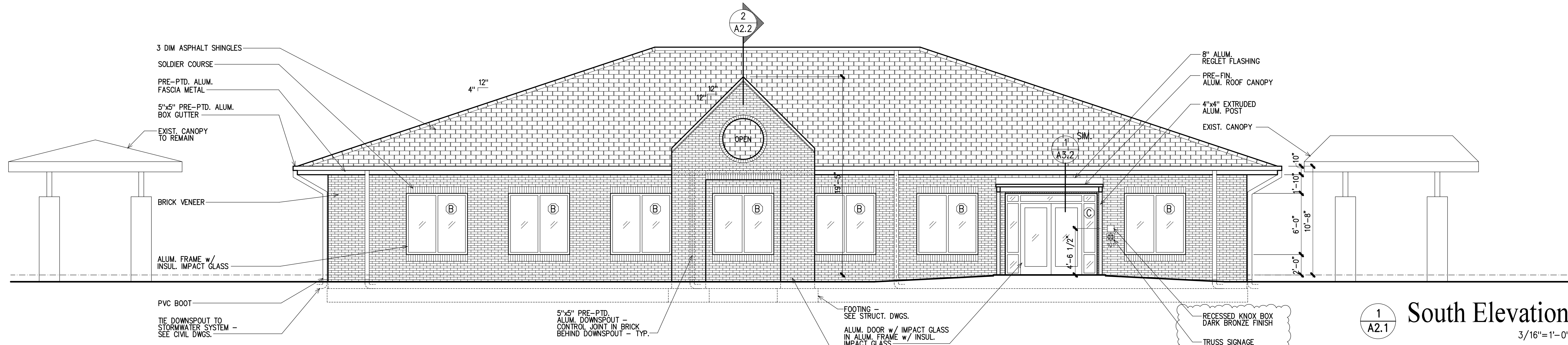
- a. The requirement to interconnect or tie the new building fire alarm system into the existing building fire alarm system is hereby deleted in its entirety. The new building shall be provided with a complete, independent, stand-alone fire alarm system, monitored in accordance with NFPA 72. A connection to the existing building's fire alarm system is to be provided, but only as a signal to a new annunciator in the new building, notifying of trouble in the existing system.
- b. Provide a separate fire alarm annunciator and remote microphone in Waiting 100, connected to the new fire alarm system in the new building.
- c. The fire alarm work in the 2 classroom renovations (Alt#1) is to be by Advanced Fire Protection Services. General contractor is to include this in the cost for Alternate #1.

III. Attachments:

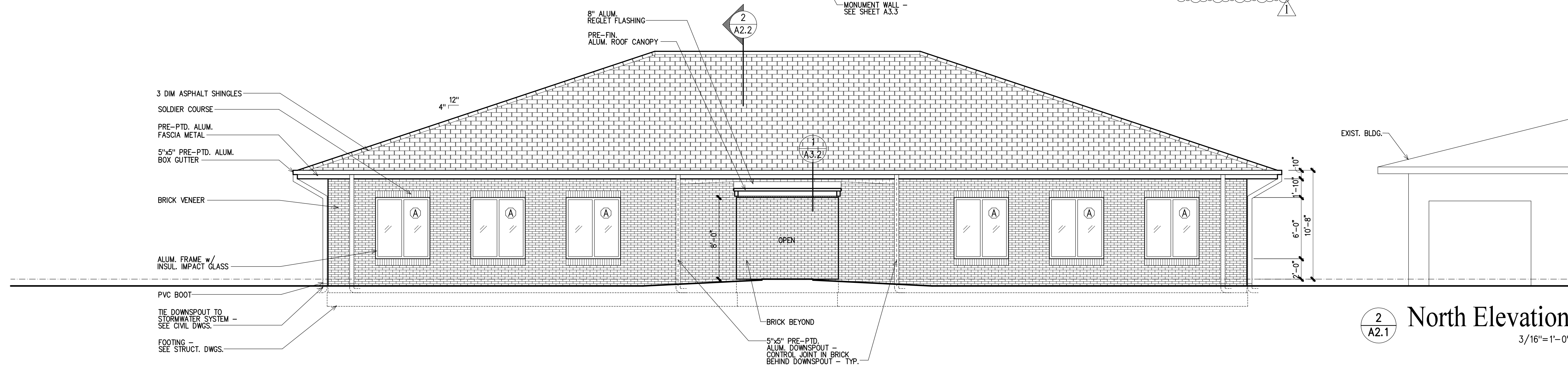
1. Drawings:

- a. Sheets A2.1 & A4.1 dated 6-15-26
- b. Site Plan Showing Existing Irrigation Location

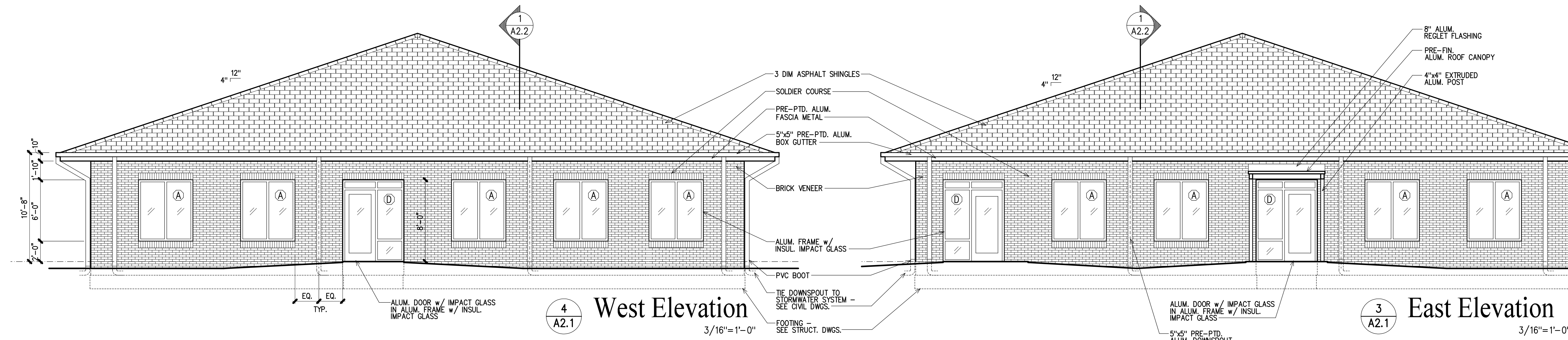
End of Addendum #4.



1
A2.1 South Elevation
3/16"=1'-0"



2
A2.1 North Elevation
3/16"=1'-0"



4
A2.1 West Elevation
3/16"=1'-0"

3
A2.1 East Elevation
3/16"=1'-0"

6/15/26 ADDENDUM #4

Project
Admin-Classroom Building
 St. Mary Catholic School
 Fort Walton Beach, Florida

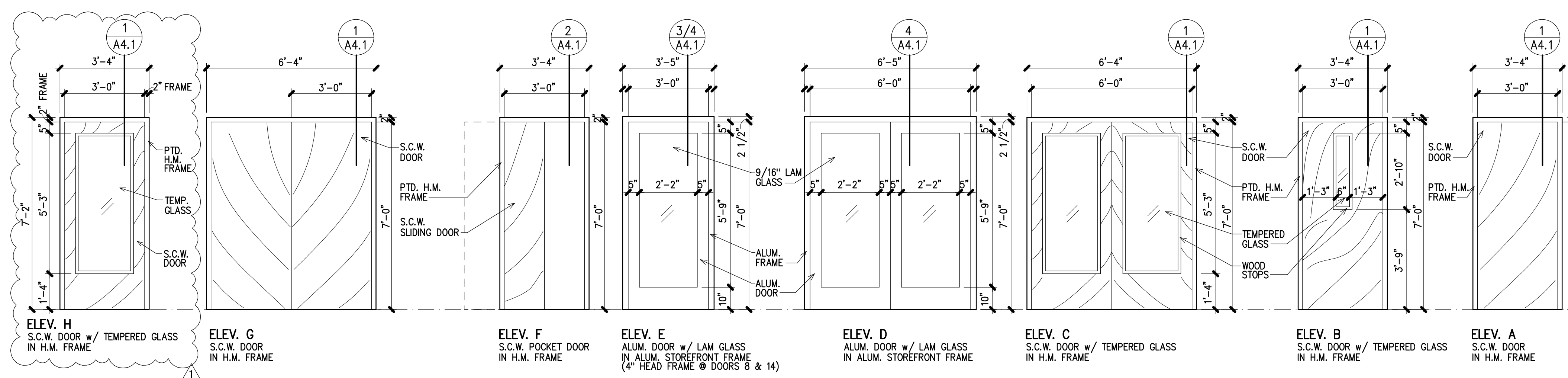
Date:
 4-24-26

Project No.
 1325

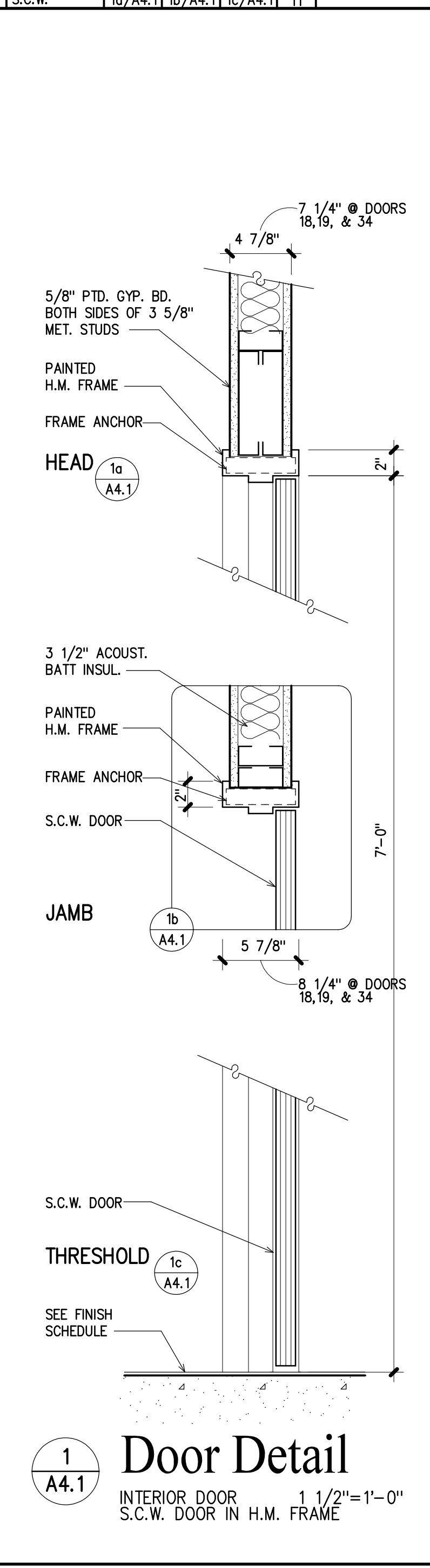
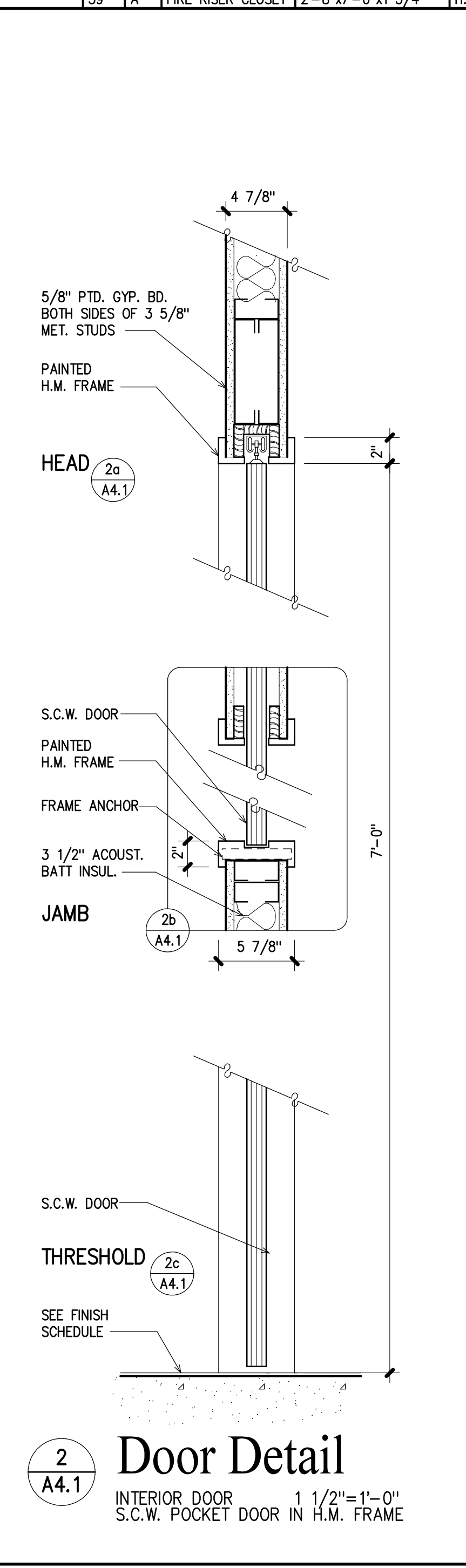
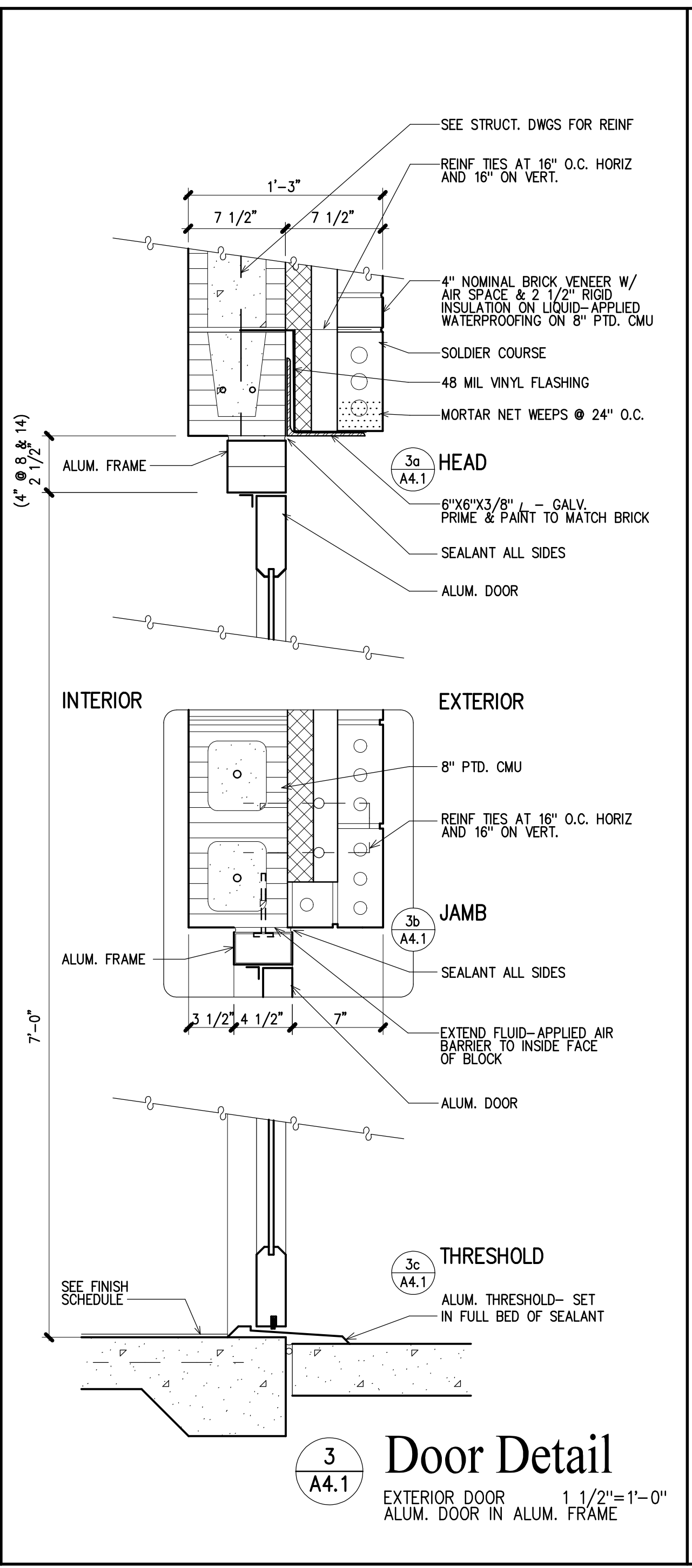
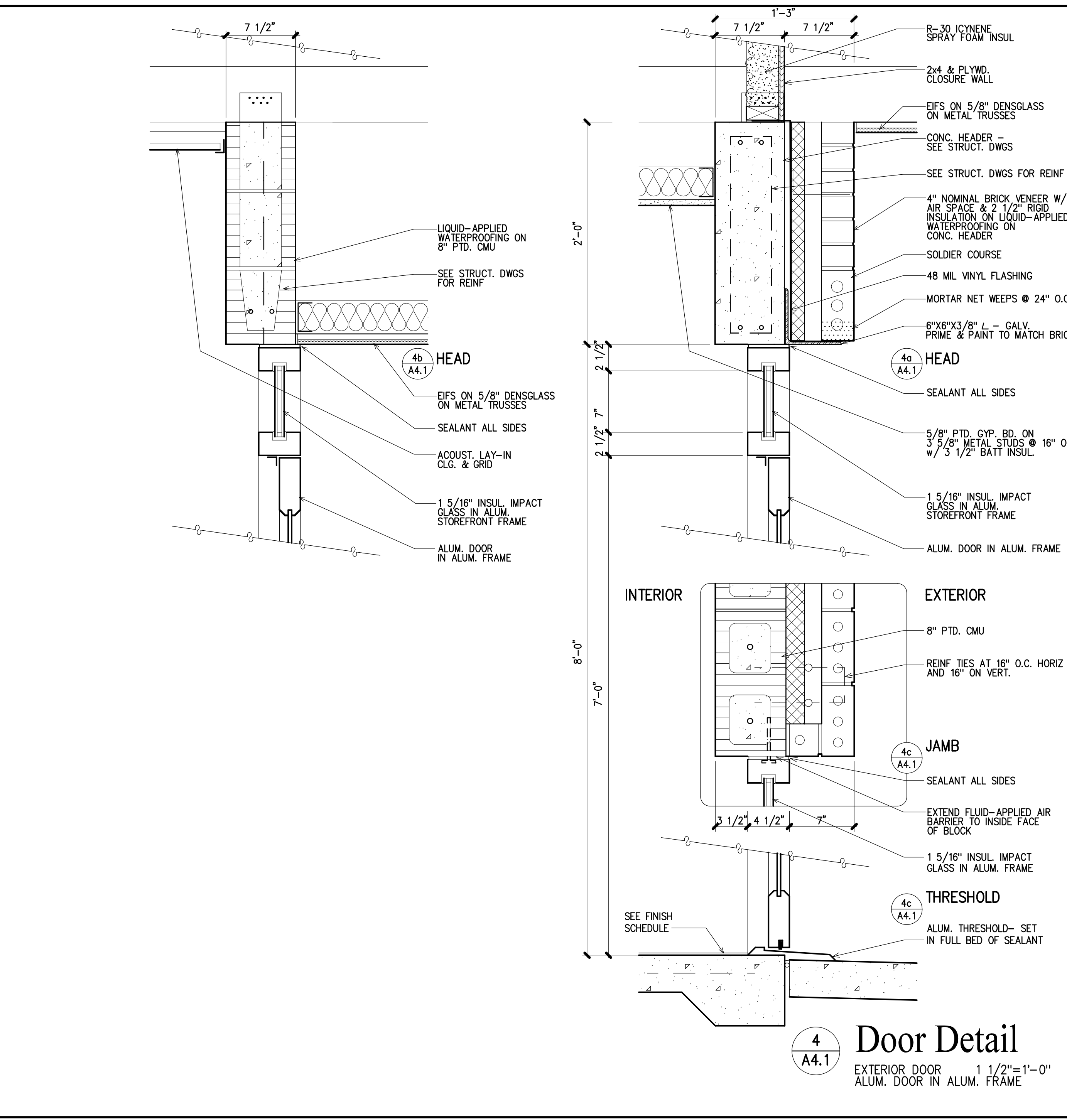
Sheet No.
A2.1

DOOR SCHEDULE

MARK	ELEV	LOCATION	SIZE(w x h x t)	FRM TYPE	DOOR TYPE	HEAD	JAMB	THOLD	HDW	REMARKS
01	D	WAITING	PR 3'-0"x7'-0"x1 3/4"	ALUM.	ALUM./GLASS	4c/A4.1	4b/A4.1	4c/A4.1	1	ACCESS CONTROL
02	E	WAITING	3'-0"x7'-0"x1 3/4"	ALUM.	ALUM./GLASS	4c/A4.1	4b/A4.1	4c/A4.1	2	
03	C	WAITING	PR 3'-0"x7'-0"x1 3/4"	H.M.	S.C.W./GLASS	1a/A4.1	1b/A4.1	1c/A4.1	3	ACCESS CONTROL
04	B	SECURITY	3'-0"x7'-0"x1 3/4"	H.M.	S.C.W./GLASS	1a/A4.1	1b/A4.1	1c/A4.1	4	
05	B	CONFERENCE	3'-0"x7'-0"x1 3/4"	H.M.	S.C.W./GLASS	1a/A4.1	1b/A4.1	1c/A4.1	4	
06	E	HALLWAY	3'-0"x7'-0"x1 3/4"	ALUM.	ALUM./GLASS	4b/A4.1	4b/A4.1	4c/A4.1	2	ACCESS CONTROL
07	B	CLASSROOM	3'-0"x7'-0"x1 3/4"	H.M.	S.C.W./GLASS	1a/A4.1	1b/A4.1	1c/A4.1	6	
08	E	CLASSROOM	3'-0"x7'-0"x1 3/4"	ALUM.	ALUM./GLASS	3a/A4.1	3b/A4.1	3c/A4.1	2	4" HEAD FRAME
09	B	TEACHER RESOURCE	3'-0"x7'-0"x1 3/4"	H.M.	S.C.W./GLASS	1a/A4.1	1b/A4.1	1c/A4.1	4	
10	A	RR	3'-0"x7'-0"x1 3/4"	H.M.	S.C.W.	1a/A4.1	1b/A4.1	1c/A4.1	7	
11	B	CLASSROOM	3'-0"x7'-0"x1 3/4"	H.M.	S.C.W./GLASS	1a/A4.1	1b/A4.1	1c/A4.1	8	
12	A	RR	3'-0"x7'-0"x1 3/4"	H.M.	S.C.W.	1a/A4.1	1b/A4.1	1c/A4.1	7	
13	B	TEACHER RESOURCE	3'-0"x7'-0"x1 3/4"	H.M.	S.C.W./GLASS	1a/A4.1	1b/A4.1	1c/A4.1	4	
14	E	CLASSROOM	3'-0"x7'-0"x1 3/4"	ALUM.	ALUM./GLASS	3a/A4.1	3b/A4.1	3c/A4.1	2	4" HEAD FRAME
15	B	CLASSROOM	3'-0"x7'-0"x1 3/4"	H.M.	S.C.W./GLASS	1a/A4.1	1b/A4.1	1c/A4.1	6	
16	E	HALLWAY	3'-0"x7'-0"x1 3/4"	ALUM.	ALUM./GLASS	4b/A4.1	4b/A4.1	4c/A4.1	5	ACCESS CONTROL
17	H	HALLWAY	3'-0"x7'-0"x1 3/4"	H.M.	S.C.W./GLASS	1a/A4.1	1b/A4.1	1c/A4.1	6	
18	B	COUNSEL	3'-0"x7'-0"x1 3/4"	H.M.	S.C.W./GLASS	1a/A4.1	1b/A4.1	1c/A4.1	4	
19	B	TEACHERS	3'-0"x7'-0"x1 3/4"	H.M.	S.C.W./GLASS	1a/A4.1	1b/A4.1	1c/A4.1	4	
20	B	PRINCIPAL	3'-0"x7'-0"x1 3/4"	H.M.	S.C.W./GLASS	1a/A4.1	1b/A4.1	1c/A4.1	4	
21	F	PRINCIPAL	3'-0"x7'-0"x1 3/4"	H.M.	S.C.W.	2a/A4.1	2b/A4.1	2c/A4.1	9	
22	B	BOOKKEEP	3'-0"x7'-0"x1 3/4"	H.M.	S.C.W./GLASS	1a/A4.1	1b/A4.1	1c/A4.1	4	
23	F	BOOKKEEP	3'-0"x7'-0"x1 3/4"	H.M.	S.C.W.	2a/A4.1	2b/A4.1	2c/A4.1	9	
24	B	ADMISSIONS	3'-0"x7'-0"x1 3/4"	H.M.	S.C.W./GLASS	1a/A4.1	1b/A4.1	1c/A4.1	4	
25	F	ADMISSIONS	3'-0"x7'-0"x1 3/4"	H.M.	S.C.W.	2a/A4.1	2b/A4.1	2c/A4.1	9	
26	B	ASSITANT PRINCIPAL	3'-0"x7'-0"x1 3/4"	H.M.	S.C.W./GLASS	1a/A4.1	1b/A4.1	1c/A4.1	4	
27	H	HALLWAY	3'-0"x7'-0"x1 3/4"	H.M.	S.C.W./GLASS	1a/A4.1	1b/A4.1	1c/A4.1	4	
28	B	CLINIC	3'-0"x7'-0"x1 3/4"	H.M.	S.C.W./GLASS	1a/A4.1	1b/A4.1	1c/A4.1	4	
29	A	STORAGE	3'-0"x7'-0"x1 3/4"	H.M.	S.C.W.	1a/A4.1	1b/A4.1	1c/A4.1	4	
30	B	BREAKROOM	3'-0"x7'-0"x1 3/4"	H.M.	S.C.W./GLASS	1a/A4.1	1b/A4.1	1c/A4.1	8	
31	B	SPEECH	3'-0"x7'-0"x1 3/4"	H.M.	S.C.W./GLASS	1a/A4.1	1b/A4.1	1c/A4.1	4	
32	B	DEVELOPMENT	3'-0"x7'-0"x1 3/4"	H.M.	S.C.W./GLASS	1a/A4.1	1b/A4.1	1c/A4.1	4	
33	A	MEN'S RR	3'-0"x7'-0"x1 3/4"	H.M.	S.C.W.	1a/A4.1	1b/A4.1	1c/A4.1	7	
34	A	WOMEN'S RR	3'-0"x7'-0"x1 3/4"	H.M.	S.C.W.	1a/A4.1	1b/A4.1	1c/A4.1	7	
35	A	JANITOR'S CLOSET	3'-0"x7'-0"x1 3/4"	H.M.	S.C.W.	1a/A4.1	1b/A4.1	1c/A4.1	11	
36	G	HVAC CLOSET	PR 3'-0"x7'-0"x1 3/4"	H.M.	S.C.W.	1a/A4.1	1b/A4.1	1c/A4.1	11	
37	A	HVAC CLOSET	3'-0"x7'-0"x1 3/4"	H.M.	S.C.W.	1a/A4.1	1b/A4.1	1c/A4.1	10	
38	G	HVAC CLOSET	PR 3'-0"x7'-0"x1 3/4"	H.M.	S.C.W.	1a/A4.1	1b/A4.1	1c/A4.1	10	
39	A	FIRE RISER CLOSET	2'-8"x7'-0"x1 3/4"	H.M.	S.C.W.	1a/A4.1	1b/A4.1	1c/A4.1	11	



Door Elevations
3/8"=1'-0"



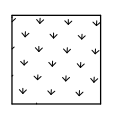
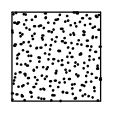
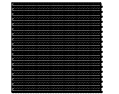


6/15/26 ADDENDUM #4

Project
Admin-Classroom Building
St. Mary Catholic School
Fort Walton Beach, Florida

Date:
4-24-26
Project No.
1325

Sheet No.
A4.1

SITE LEGEND

- PROPERTY LINE
-  NEW SOD: 419 TIFWAY BERMUDA
 THESE AREAS TO RECEIVE NEW IRRIGATION SYSTEM - TIE TO EXIST. SYSTEM
-  CONCRETE SIDEWALK: 4" THICK REINF. w/ #1.4xW1.4-6x6 W.W.F. OR FIBERMESH PROVIDE SCORED JOINTS AS SHOWN BUT NOT TO EXCEED 6" O.C. PROVIDE EXPANSION JOINTS AS SHOWN BUT NOT TO EXCEED 30' O.C.
-  WOOD CHIPS
-  SHRUB - 4' TALL NELLIE HOLLY STEPHENS
-  NEW TREE: 9" TALL LIVE OAK 3" CALIPER

